

For Research Use Only

# TGM1 Recombinant antibody, PBS Only (Capture)

Catalog Number: 84032-2-PBS



## Basic Information

<b>Catalog Number:</b> 84032-2-PBS	<b>GenBank Accession Number:</b> BC034699	<b>Purification Method:</b> Protein A purification
<b>Size:</b> 100ug, Concentration: 1 mg/ml by Nanodrop;	<b>GeneID (NCBI):</b> 7051	<b>CloneNo.:</b> 241218E12
<b>Source:</b> Rabbit	<b>UNIPROT ID:</b> P22735	
<b>Isotype:</b> IgG	<b>Full Name:</b> transglutaminase 1 (K polypeptide epidermal type I, protein-glutamine- gamma-glutamyltransferase)	
<b>Immunogen Catalog Number:</b> AG17969	<b>Calculated MW:</b> 817 aa, 90 kDa	
	<b>Observed MW:</b> 90 kDa	

## Applications

**Tested Applications:**  
WB, IHC, Cytometric bead array, Indirect ELISA

**Species Specificity:**  
human, rat

## Product Information

84032-2-PBS targets TGM1 as part of a matched antibody pair:

MP00951-1: 84032-2-PBS capture and 84032-1-PBS detection (validated in Cytometric bead array)

Unconjugated rabbit recombinant monoclonal antibody in PBS only (BSA and azide free) storage buffer at a concentration of 1 mg/mL, ready for conjugation. Created using Proteintech's proprietary in-house recombinant technology. Recombinant production enables unrivalled batch-to-batch consistency, easy scale-up, and future security of supply.

This conjugation ready format makes antibodies ideal for use in many applications including: ELISAs, multiplex assays requiring matched pairs, mass cytometry, and multiplex imaging applications. Antibody use should be optimized by the end user for each application and assay.

## Storage

**Storage:**  
Store at -80°C.

**Storage Buffer:**  
PBS Only

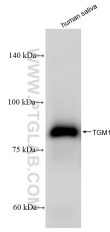
For technical support and original validation data for this product please contact:

T: 1 (888) 4PTGLAB (1-888-478-4522) (toll free  
in USA), or 1(312) 455-8498 (outside USA)

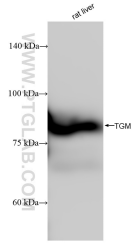
E: [proteintech@ptglab.com](mailto:proteintech@ptglab.com)  
W: [ptglab.com](http://ptglab.com)

**This product is exclusively available under Proteintech Group brand and is not available to purchase from any other manufacturer.**

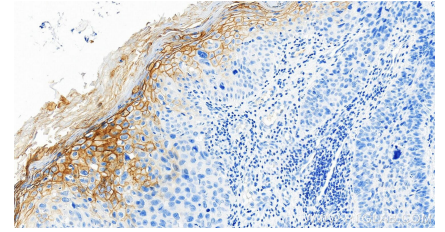
## Selected Validation Data



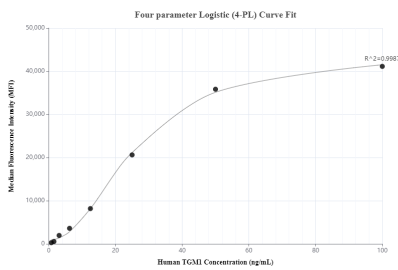
Various lysates were subjected to SDS PAGE followed by western blot with 84032-2-RR (TGM1 antibody) at dilution of 1:10000 incubated at room temperature for 1.5 hours. This data was developed using the same antibody clone with 84032-2-PBS in a different storage buffer formulation.



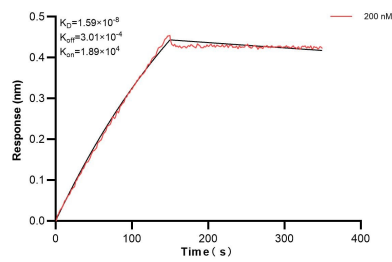
Various lysates were subjected to SDS PAGE followed by western blot with 84032-2-RR (TGM1 antibody) at dilution of 1:10000 incubated at room temperature for 1.5 hours. This data was developed using the same antibody clone with 84032-2-PBS in a different storage buffer formulation.



Immunohistochemical analysis of paraffin-embedded human Bowen disease slide using 84032-2-RR (TGM1 antibody) at dilution of 1:1000 (under 20x lens). Heat mediated antigen retrieval with Tris-EDTA buffer (pH 9.0). This data was developed using the same antibody clone with 84032-2-PBS in a different storage buffer formulation.



Cytometric bead array standard curve of MP00951-1, TGM1 Recombinant Matched Antibody Pair, PBS Only. Capture antibody: 84032-2-PBS. Detection antibody: 84032-1-PBS. Standard: Ag17969. Range: 0.781-100 ng/mL



Biolayer interferometry (BLI) kinetic assay of 84032-2-PBS against Human TGM1 was performed. The affinity constant is 15.9 nM.