

For Research Use Only

CD23 Recombinant antibody, PBS Only (Detector)

Catalog Number: 84024-2-PBS



Basic Information

Catalog Number: 84024-2-PBS	GenBank Accession Number: BC064417	Purification Method: Protein A purification
Size: 100ug, Concentration: 1 mg/ml by Nanodrop;	GeneID (NCBI): 2208	CloneNo.: 241269B10
Source: Rabbit	UNIPROT ID: P06734	
Isotype: IgG	Full Name: Fc fragment of IgE, low affinity II, receptor for (CD23)	
	Calculated MW: 321 aa, 36 kDa	
	Observed MW: 36 kDa	

Applications

Tested Applications:
WB, IHC, Cytometric bead array, Indirect ELISA

Species Specificity:
human, mouse

Product Information

84024-2-PBS targets CD23 as part of a matched antibody pair:

MP00958-1: 84024-1-PBS capture and 84024-2-PBS detection (validated in Cytometric bead array)

Unconjugated rabbit recombinant monoclonal antibody in PBS only (BSA and azide free) storage buffer at a concentration of 1 mg/mL, ready for conjugation. Created using Proteintech's proprietary in-house recombinant technology. Recombinant production enables unrivalled batch-to-batch consistency, easy scale-up, and future security of supply.

This conjugation ready format makes antibodies ideal for use in many applications including: ELISAs, multiplex assays requiring matched pairs, mass cytometry, and multiplex imaging applications. Antibody use should be optimized by the end user for each application and assay.

Background Information

CD23, also known as low-affinity immunoglobulin epsilon Fc receptor, is a transmembrane glycoprotein present on a subpopulation of B lymphocytes in germinal centers, EBV-transformed B-lymphoblastoid cell lines, follicular dendritic cells, and a subpopulation of peripheral blood cells. CD23 has essential roles in the regulation of IgE production and in the differentiation of B-cells

Storage

Storage:
Store at -80°C.

Storage Buffer:
PBS Only

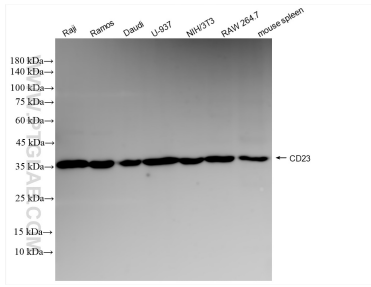
For technical support and original validation data for this product please contact:

T: 1 (888) 4PTGLAB (1-888-478-4522) (toll free in USA), or 1(312) 455-8498 (outside USA)

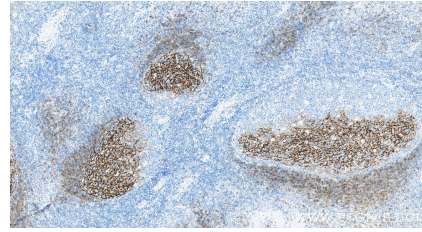
E: proteintech@ptglab.com
W: ptglab.com

This product is exclusively available under Proteintech Group brand and is not available to purchase from any other manufacturer.

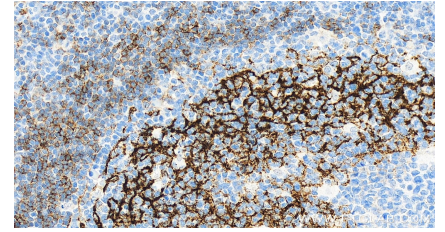
Selected Validation Data



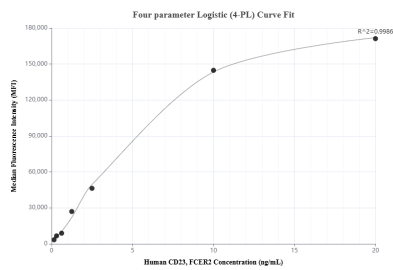
Various lysates were subjected to SDS PAGE followed by western blot with 84024-2-RR (CD23, FCER2 antibody) at dilution of 1:10000 incubated at room temperature for 1.5 hours. This data was developed using the same antibody clone with 84024-2-PBS in a different storage buffer formulation.



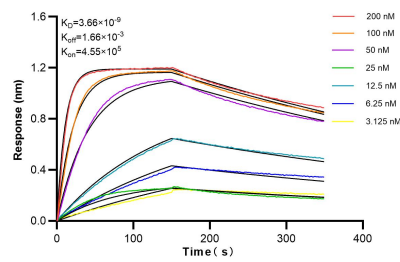
Immunohistochemical analysis of paraffin-embedded human tonsillitis tissue slide using 84024-2-RR (CD23 antibody) at dilution of 1:1000 (under 10x lens). Heat mediated antigen retrieval with Tris-EDTA buffer (pH 9.0). This data was developed using the same antibody clone with 84024-2-PBS in a different storage buffer formulation.



Immunohistochemical analysis of paraffin-embedded human tonsillitis tissue slide using 84024-2-RR (CD23 antibody) at dilution of 1:1000 (under 40x lens). Heat mediated antigen retrieval with Tris-EDTA buffer (pH 9.0). This data was developed using the same antibody clone with 84024-2-PBS in a different storage buffer formulation.



Cytometric bead array standard curve of MP00958-1, CD23 Recombinant Matched Antibody Pair, PBS Only. Capture antibody: 84024-1-PBS. Detection antibody: 84024-2-PBS. Standard: RP02343. Range: 0.156-20 ng/mL



Biolayer interferometry (BLI) kinetic assays of 83996-4-RR against Human CD23 were performed. The affinity constant is 3.66 nM.