

For Research Use Only

CD23 Recombinant antibody, PBS Only (Capture/Detector)

Catalog Number: 84024-1-PBS



Basic Information

Catalog Number: 84024-1-PBS	GenBank Accession Number: BC064417	Purification Method: Protein A purification
Size: 100ug, Concentration: 1 mg/ml by Nanodrop;	GeneID (NCBI): 2208	CloneNo.: 241269B5
Source: Rabbit	UNIPROT ID: P06734	
Isotype: IgG	Full Name: Fc fragment of IgE, low affinity II, receptor for (CD23)	
	Calculated MW: 321 aa, 36 kDa	

Applications

Tested Applications:
Cytometric bead array, Sandwich ELISA, Indirect ELISA,
Sample test

Species Specificity:
human

Product Information

84024-1-PBS targets CD23 as part of a matched antibody pair:

MP00958-1: 84024-1-PBS capture and 84024-2-PBS detection (validated in Cytometric bead array)

MP00958-2: 84024-1-PBS capture and 84024-3-PBS detection (validated in Cytometric bead array)

MP00958-3: 84024-3-PBS capture and 84024-1-PBS detection (validated in Sandwich ELISA)

Unconjugated rabbit recombinant monoclonal antibody in PBS only (BSA and azide free) storage buffer at a concentration of 1 mg/mL, ready for conjugation. Created using Proteintech's proprietary in-house recombinant technology. Recombinant production enables unrivalled batch-to-batch consistency, easy scale-up, and future security of supply.

This conjugation ready format makes antibodies ideal for use in many applications including: ELISAs, multiplex assays requiring matched pairs, mass cytometry, and multiplex imaging applications. Antibody use should be optimized by the end user for each application and assay.

Storage

Storage:
Store at -80°C.
Storage Buffer:
PBS Only

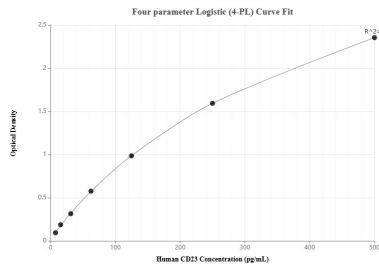
For technical support and original validation data for this product please contact:

T: 1 (888) 4PTGLAB (1-888-478-4522) (toll free
in USA), or 1(312) 455-8498 (outside USA)

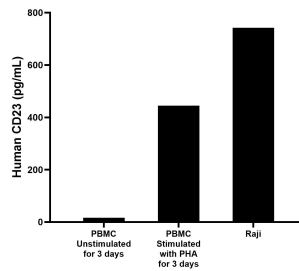
E: proteintech@ptglab.com
W: ptglab.com

This product is exclusively available under Proteintech Group brand and is not available to purchase from any other manufacturer.

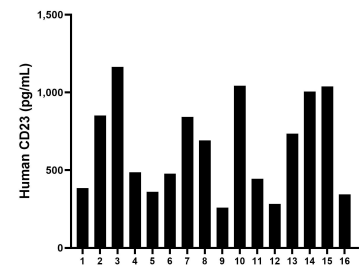
Selected Validation Data



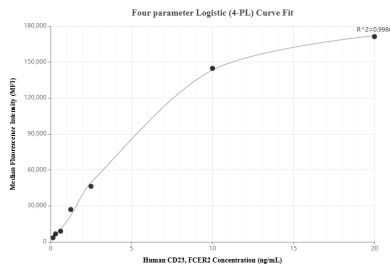
Sandwich ELISA standard curve of MP00958-3, Human CD23 Recombinant Matched Antibody Pair - PBS only. 84024-3-PBS was coated to a plate as the capture antibody and incubated with serial dilutions of standard RPO2343. 84024-1-PBS was HRP conjugated as the detection antibody. Range: 7.81-500 pg/mL



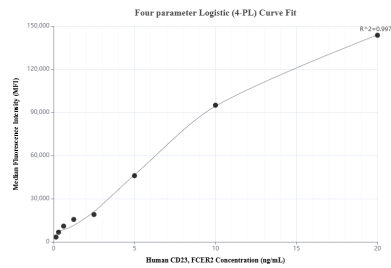
Human peripheral blood mononuclear cells (PBMC) were cultured unstimulated or stimulated with 10 µg/mL PHA for 3 days. The mean CD23 concentration was determined to be 16.3 pg/mL in unstimulated PBMC supernatant, 444.73 pg/mL in PHA stimulated PBMC supernatant. Raji human Burkitt's lymphoma cells were cultured in RPMI supplemented with 10% fetal bovine serum, 2mM L-glutamine, 100 U/mL penicillin, and 100 µg/mL streptomycin sulfate. The mean



Serum of sixteen individual healthy human donors was measured. The human CD23 concentration of detected samples was determined to be 651.0 pg/mL with a range of 259.5 - 1,165.0 pg/mL



Cytometric bead array standard curve of MP00958-1, CD23 Recombinant Matched Antibody Pair, PBS Only. Capture antibody: 84024-1-PBS. Detection antibody: 84024-2-PBS. Standard: RPO2343. Range: 0.156-20 ng/mL



Cytometric bead array standard curve of MP00958-2, CD23 Recombinant Matched Antibody Pair, PBS Only. Capture antibody: 84024-1-PBS. Detection antibody: 84024-3-PBS. Standard: RPO2343. Range: 0.156-20 ng/mL