

For Research Use Only

NFKB2,p100 Recombinant antibody, PBS Only (Capture/Detector)

Catalog Number:84022-4-PBS



Basic Information

Catalog Number: 84022-4-PBS	GenBank Accession Number: BC002844	Purification Method: Protein A purification
Size: 100ug , Concentration: 1 mg/ml by Nanodrop;	GeneID (NCBI): 4791	CloneNo.: 241126F8
Source: Rabbit	ENSEMBL Gene ID: ENSG00000077150	
Isotype: IgG	UNIPROT ID: Q00653	
Immunogen Catalog Number: AG0662	Full Name: nuclear factor of kappa light polypeptide gene enhancer in B-cells 2 (p49/p100)	
	Calculated MW: 97 kDa	

Applications

Tested Applications:
Cytometric bead array, Sandwich ELISA, Indirect ELISA,
Sample test

Species Specificity:
human

Product Information

84022-4-PBS targets NFKB2,p100 as part of a matched antibody pair:

MP00950-1: 84022-4-PBS capture and 84022-2-PBS detection (validated in Cytometric bead array, Sandwich ELISA)

MP00950-2: 84022-3-PBS capture and 84022-4-PBS detection (validated in Cytometric bead array)

MP00950-3: 84022-1-PBS capture and 84022-4-PBS detection (validated in Cytometric bead array)

Unconjugated rabbit recombinant monoclonal antibody in PBS only (BSA and azide free) storage buffer at a concentration of 1 mg/mL, ready for conjugation. Created using Proteintech's proprietary in-house recombinant technology. Recombinant production enables unrivalled batch-to-batch consistency, easy scale-up, and future security of supply.

This conjugation ready format makes antibodies ideal for use in many applications including: ELISAs, multiplex assays requiring matched pairs, mass cytometry, and multiplex imaging applications. Antibody use should be optimized by the end user for each application and assay.

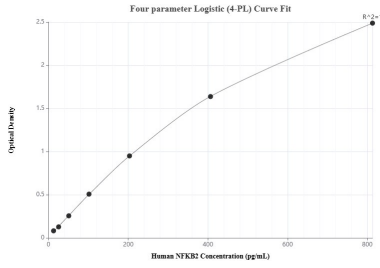
Storage

Storage:
Store at -80°C.
Storage Buffer:
PBS Only

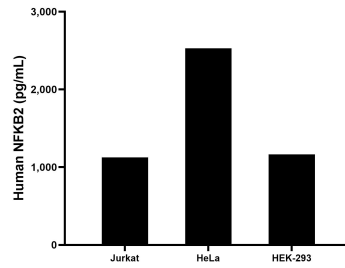
For technical support and original validation data for this product please contact:
T: 1 (888) 4PTGLAB (1-888-478-4522) (toll free in USA), or 1(312) 455-8498 (outside USA) E: proteintech@ptglab.com
W: ptglab.com

This product is exclusively available under Proteintech Group brand and is not available to purchase from any other manufacturer.

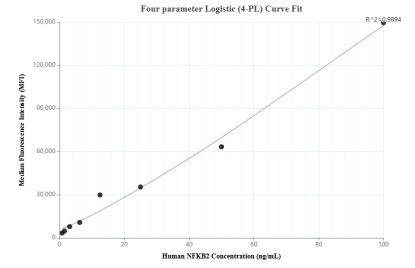
Selected Validation Data



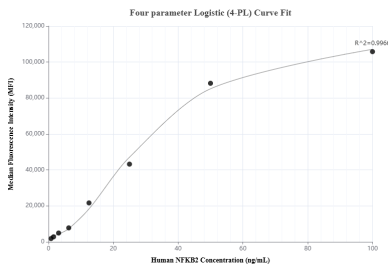
Sandwich ELISA standard curve of MP00950-1, Human NFKB2 Recombinant Matched Antibody Pair - PBS only. 84022-4-PBS was coated to a plate as the capture antibody and incubated with serial dilutions of standard Ag0662. 84022-2-PBS was HRP conjugated as the detection antibody. Range: 12.7-813 pg/mL



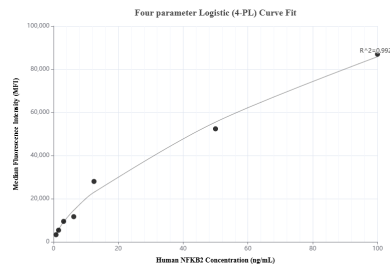
The mean NFKB2 concentration was determined to be 1,125.5 pg/mL in Jurkat cell extract based on a 2.3 mg/mL extract load, 2,530.2 pg/mL in HeLa cell extract based on a 1.5 mg/mL extract load and 1,165.1 pg/mL in HEK-293 cell extract based on a 2.0 mg/mL extract load.



Cytometric bead array standard curve of MP00950-1, NFKB2 Recombinant Matched Antibody Pair, PBS Only. Capture antibody: 84022-4-PBS. Detection antibody: 84022-2-PBS. Standard: Ag0662. Range: 0.781-100 ng/mL



Cytometric bead array standard curve of MP00950-2, NFKB2 Recombinant Matched Antibody Pair, PBS Only. Capture antibody: 84022-3-PBS. Detection antibody: 84022-4-PBS. Standard: Ag0662. Range: 0.781-100 ng/mL



Cytometric bead array standard curve of MP00950-3, NFKB2 Recombinant Matched Antibody Pair, PBS Only. Capture antibody: 84022-1-PBS. Detection antibody: 84022-4-PBS. Standard: Ag0662. Range: 0.781-100 ng/mL