

For Research Use Only

# FOXF1 Recombinant antibody, PBS Only

Catalog Number: 84020-3-PBS



## Basic Information

<b>Catalog Number:</b> 84020-3-PBS	<b>GenBank Accession Number:</b> NP_001442	<b>Purification Method:</b> Protein A purification
<b>Size:</b> 100ug , Concentration: 1 mg/ml by Nanodrop;	<b>GeneID (NCBI):</b> 2294	<b>CloneNo.:</b> 241076C8
<b>Source:</b> Rabbit	<b>UNIPROT ID:</b> Q12946	
<b>Isotype:</b> IgG	<b>Full Name:</b> forkhead box F1	
<b>Immunogen Catalog Number:</b> AG34266	<b>Calculated MW:</b> 40 kDa	
	<b>Observed MW:</b> 40 kDa	

## Applications

**Tested Applications:**  
IF/ICC, FC (Intra), Indirect ELISA

**Species Specificity:**  
human

## Background Information

FOXF1 (Forkhead box protein F1), also known as FKHL5, It is expected to be located in the nucleus, which is expressed predominantly in lung and placenta. FOXF1, a member of the Forkhead box family of transcription factors, as one of the most highly and consistently upregulated genes in FP-RMS. While it is known that FOXF1 is required for mesodermal differentiation toward endothelial and smooth muscle cell lineages, FOXF1 is not expressed in differentiated skeletal muscle cells, and its role in fusion-positive FP-RMS remains unknown (PMID: 33627785). The molecular weight of FOXF1 is 40 kDa.

## Storage

**Storage:**  
Store at -80°C.

**Storage Buffer:**  
PBS Only

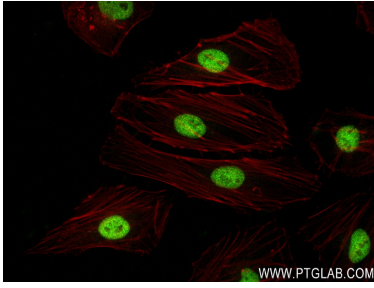
For technical support and original validation data for this product please contact:

T: 1 (888) 4PTGLAB (1-888-478-4522) (toll free in USA), or 1(312) 455-8498 (outside USA)

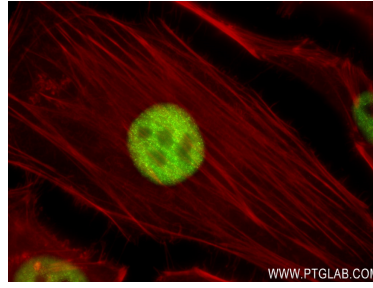
E: [proteintech@ptglab.com](mailto:proteintech@ptglab.com)  
W: [ptglab.com](http://ptglab.com)

**This product is exclusively available under Proteintech Group brand and is not available to purchase from any other manufacturer.**

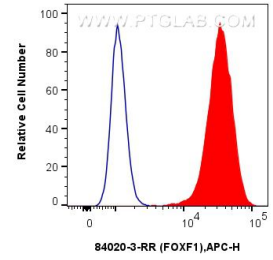
## Selected Validation Data



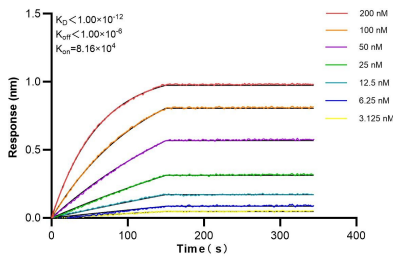
Immunofluorescent analysis of (4% PFA) fixed HeLa cells using FOXF1 antibody (84020-3-RR, Clone: 241076C8) at dilution of 1:250 and CoraLite@488-Conjugated AffiniPure Goat Anti-Rabbit IgG(H+L) (SA00013-2), CL594-Phalloidin (red). This data was developed using the same antibody clone with 84020-3-PBS in a different storage buffer formulation.



Immunofluorescent analysis of (4% PFA) fixed HeLa cells using FOXF1 antibody (84020-3-RR, Clone: 241076C8) at dilution of 1:250 and CoraLite@488-Conjugated AffiniPure Goat Anti-Rabbit IgG(H+L) (SA00013-2), CL594-Phalloidin (red). This data was developed using the same antibody clone with 84020-3-PBS in a different storage buffer formulation.



$1 \times 10^6$  HeLa cells were intracellularly stained with 0.25  $\mu$ g FOXF1 Recombinant antibody (84020-3-RR, Clone:241076C8) and APC-Conjugated Goat Anti-Rabbit IgG(H+L)(red), or 0.25  $\mu$ g Isotype Control (blue). Cells were fixed and permeabilized with True-Nuclear Transcription Factor Buffer Set. This data was developed using the same antibody clone with 84020-3-PBS in a different storage buffer formulation.



Biolayer interferometry (BLI) kinetic assays of 84020-3-RR against Human FOXF1 were performed. The affinity constant is below 1 pM.