

For Research Use Only

FAPA Recombinant antibody, PBS Only (Capture)

Catalog Number: 84018-2-PBS



Basic Information

Catalog Number: 84018-2-PBS	GenBank Accession Number: NM_004460.4	Purification Method: Protein A purification
Size: 100ug, Concentration: 1 mg/ml by Nanodrop;	GeneID (NCBI): 2191	CloneNo.: 241129E7
Source: Rabbit	UNIPROT ID: Q12884-1	
Isotype: IgG	Full Name: fibroblast activation protein, alpha	
	Calculated MW: 88 kDa	

Applications

Tested Applications:
Cytometric bead array, Sandwich ELISA, Indirect ELISA, Sample test

Species Specificity:
human

Product Information

84018-2-PBS targets FAPA as part of a matched antibody pair:

MP00971-1: 84018-2-PBS capture and 84018-3-PBS detection (validated in Cytometric bead array, Sandwich ELISA)

MP00971-2: 84018-2-PBS capture and 84018-1-PBS detection (validated in Cytometric bead array)

Unconjugated rabbit recombinant monoclonal antibody in PBS only (BSA and azide free) storage buffer at a concentration of 1 mg/mL, ready for conjugation. Created using Proteintech's proprietary in-house recombinant technology. Recombinant production enables unrivalled batch-to-batch consistency, easy scale-up, and future security of supply.

This conjugation ready format makes antibodies ideal for use in many applications including: ELISAs, multiplex assays requiring matched pairs, mass cytometry, and multiplex imaging applications. Antibody use should be optimized by the end user for each application and assay.

Storage

Storage:
Store at -80°C.
Storage Buffer:
PBS Only

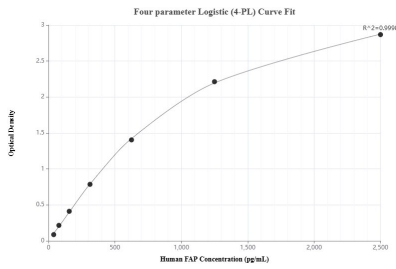
For technical support and original validation data for this product please contact:

T: 1 (888) 4PTGLAB (1-888-478-4522) (toll free in USA), or 1(312) 455-8498 (outside USA)

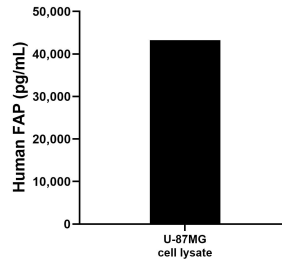
E: proteintech@ptglab.com
W: ptglab.com

This product is exclusively available under Proteintech Group brand and is not available to purchase from any other manufacturer.

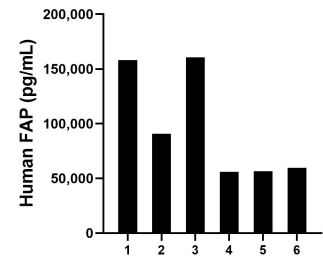
Selected Validation Data



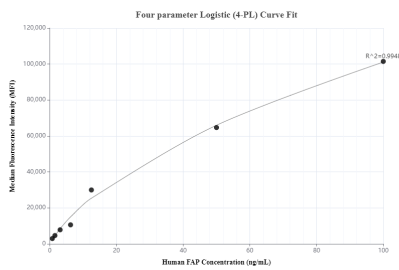
Sandwich ELISA standard curve of MP00971-1, Human FAP Recombinant Matched Antibody Pair - PBS only. 84018-2-PBS was coated to a plate as the capture antibody and incubated with serial dilutions of standard Eg0821. 84018-3-PBS was HRP conjugated as the detection antibody. Range: 39.1-2500 pg/mL



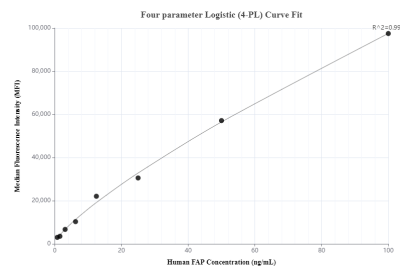
U-87MG cell lysate was measured. The human FAP concentration of detected samples was determined to be 43,236.4 pg/mL (based on a 3.9 mg/mL extract load) in U-87MG cell lysate.



Serum of six individual healthy human donors was measured. The human FAP concentration of detected samples was determined to be 96,902.1 pg/mL with a range of 55,942.0 - 160,643.1 pg/mL



Cytometric bead array standard curve of MP00971-1, FAP Recombinant Matched Antibody Pair, PBS Only. Capture antibody: 84018-2-PBS. Detection antibody: 84018-3-PBS. Standard: Eg0821. Range: 0.78-100 ng/mL



Cytometric bead array standard curve of MP00971-2, FAP Recombinant Matched Antibody Pair, PBS Only. Capture antibody: 84018-2-PBS. Detection antibody: 84018-1-PBS. Standard: Eg0821. Range: 0.78-100 ng/mL