

For Research Use Only

# SP100 Recombinant antibody, PBS Only (Capture)

Catalog Number: 84012-4-PBS



## Basic Information

<b>Catalog Number:</b> 84012-4-PBS	<b>GenBank Accession Number:</b> BC011562	<b>Purification Method:</b> Protein A purification
<b>Size:</b> 100ug, Concentration: 1 mg/ml by Nanodrop;	<b>GeneID (NCBI):</b> 6672	<b>CloneNo.:</b> 241153F3
<b>Source:</b> Rabbit	<b>UNIPROT ID:</b> P23497	
<b>Isotype:</b> IgG	<b>Full Name:</b> SP100 nuclear antigen	
<b>Immunogen Catalog Number:</b> AG35193	<b>Calculated MW:</b> 879 aa, 100 kDa	
	<b>Observed MW:</b> 70-100 kDa	

## Applications

**Tested Applications:**  
WB, Cytometric bead array, Indirect ELISA

**Species Specificity:**  
human, mouse, rat

## Product Information

84012-4-PBS targets SP100 as part of a matched antibody pair:

MP00964-1: 84012-4-PBS capture and 84012-2-PBS detection (validated in Cytometric bead array)

Unconjugated rabbit recombinant monoclonal antibody in PBS only (BSA and azide free) storage buffer at a concentration of 1 mg/mL, ready for conjugation. Created using Proteintech's proprietary in-house recombinant technology. Recombinant production enables unrivalled batch-to-batch consistency, easy scale-up, and future security of supply.

This conjugation ready format makes antibodies ideal for use in many applications including: ELISAs, multiplex assays requiring matched pairs, mass cytometry, and multiplex imaging applications. Antibody use should be optimized by the end user for each application and assay.

## Background Information

SP100 nuclear antigen, belongs to the nuclear bodies (NBs), has a role in the control of gene expression. It contains a HSR domain, which is important for the nuclear body targeting as well as for the dimerization, and one PxVxL motif, which is required for interaction with chromoshadow domains. Sp100 is an acidic protein that exerts a highly aberrant electrophoretic mobility in SDS-polyacrylamide gel electrophoresis.

## Storage

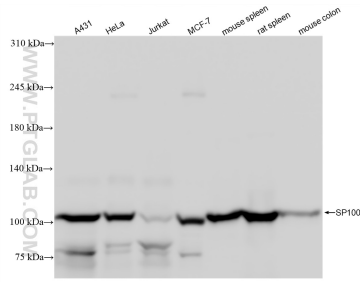
**Storage:**  
Store at -80°C.

**Storage Buffer:**  
PBS Only

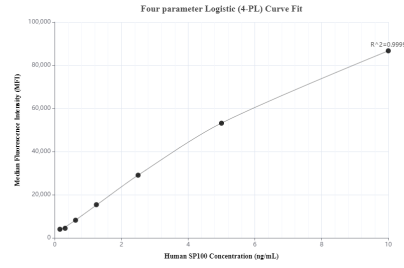
For technical support and original validation data for this product please contact:  
T: 1 (888) 4PTGLAB (1-888-478-4522) (toll free in USA), or 1(312) 455-8498 (outside USA)  
E: proteintech@ptglab.com  
W: ptglab.com

**This product is exclusively available under Proteintech Group brand and is not available to purchase from any other manufacturer.**

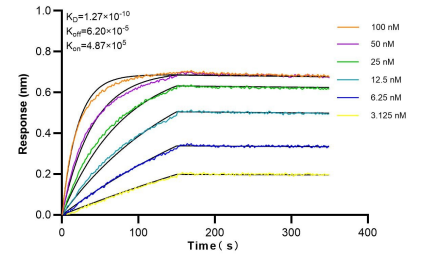
## Selected Validation Data



Various lysates were subjected to SDS PAGE followed by western blot with 84012-4-RR (SP100 antibody) at dilution of 1:10000 incubated at room temperature for 1.5 hours. This data was developed using the same antibody clone with 84012-4-PBS in a different storage buffer formulation.



Cytometric bead array standard curve of MP00964-1, SP100 Recombinant Matched Antibody Pair, PBS Only. Capture antibody: 84012-4-PBS. Detection antibody: 84012-2-PBS. Standard: Ag35193. Range: 0.156-10 ng/mL.



Bi-layer interferometry (BLI) kinetic assays of 84012-4-RR against Human SP100 were performed. The affinity constant is 0.127 nM.