

For Research Use Only

# CCDC22 Recombinant antibody, PBS Only (Capture)

Catalog Number: 83992-1-PBS

Featured Product



## Basic Information

<b>Catalog Number:</b> 83992-1-PBS	<b>GenBank Accession Number:</b> BC000972	<b>Purification Method:</b> Protein A purification
<b>Size:</b> 100ug, Concentration: 1 mg/ml by Nanodrop;	<b>GeneID (NCBI):</b> 28952	<b>CloneNo.:</b> 241146A5
<b>Source:</b> Rabbit	<b>UNIPROT ID:</b> O60826	
<b>Isotype:</b> IgG	<b>Full Name:</b> coiled-coil domain containing 22	
<b>Immunogen Catalog Number:</b> AG9980	<b>Calculated MW:</b> 71 kDa	
	<b>Observed MW:</b> 71 kDa	

## Applications

**Tested Applications:**  
WB, Cytometric bead array, Indirect ELISA

**Species Specificity:**  
human

## Product Information

83992-1-PBS targets CCDC22 as part of a matched antibody pair:

MP00890-3: 83992-1-PBS capture and 83992-4-PBS detection (validated in Cytometric bead array)

Unconjugated rabbit recombinant monoclonal antibody in PBS only (BSA and azide free) storage buffer at a concentration of 1 mg/mL, ready for conjugation. Created using Proteintech's proprietary in-house recombinant technology. Recombinant production enables unrivalled batch-to-batch consistency, easy scale-up, and future security of supply.

This conjugation ready format makes antibodies ideal for use in many applications including: ELISAs, multiplex assays requiring matched pairs, mass cytometry, and multiplex imaging applications. Antibody use should be optimized by the end user for each application and assay.

## Background Information

CCDC22 is a ubiquitously expressed coiled-coil domain protein. CCDC22 functions in the regulation of NF-kB (nuclear factor kappa-light-chain-enhancer of activated B cells) by interacting with COMMD (copper metabolism Murr1 domain-containing) proteins.]

## Storage

**Storage:**  
Store at -80°C.  
**Storage Buffer:**  
PBS Only

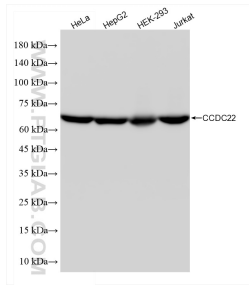
For technical support and original validation data for this product please contact:

T: 1 (888) 4PTGLAB (1-888-478-4522) (toll free in USA), or 1(312) 455-8498 (outside USA)

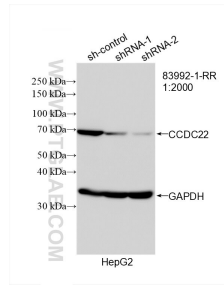
E: [proteintech@ptglab.com](mailto:proteintech@ptglab.com)  
W: [ptglab.com](http://ptglab.com)

**This product is exclusively available under Proteintech Group brand and is not available to purchase from any other manufacturer.**

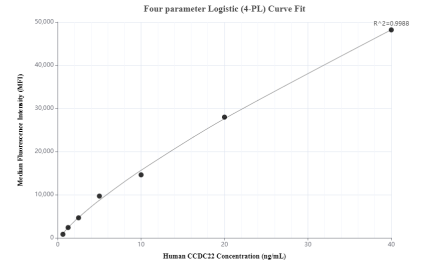
## Selected Validation Data



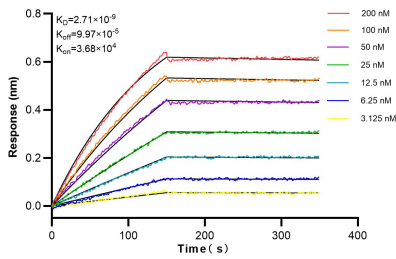
Various lysates were subjected to SDS PAGE followed by western blot with 83992-1-RR (CCDC22 antibody) at dilution of 1:5000 incubated at room temperature for 1.5 hours. This data was developed using the same antibody clone with 83992-1-PBS in a different storage buffer formulation.



WB result of CCDC22 antibody (83992-1-RR; 1:2000; incubated at room temperature for 1.5 hours) with sh-Control and sh-CCDC22 transfected HepG2 cells. This data was developed using the same antibody clone with 83992-1-PBS in a different storage buffer formulation.



Cytometric bead array standard curve of MP00890-3, CCDC22 Recombinant Matched Antibody Pair, PBS Only. Capture antibody: 83992-1-PBS. Detection antibody: 83992-4-PBS. Standard: Ag9980. Range: 0.625-40 ng/mL.



Biolayer interferometry (BLI) kinetic assays of 83992-1-RR against Human CCDC22 were performed. The affinity constant is 2.71 nM.