

For Research Use Only

# E-cadherin Recombinant antibody, PBS Only (Detector)

Catalog Number:83991-5-PBS



## Basic Information

**Catalog Number:**

83991-5-PBS

**Size:**

100ug , Concentration: 1 mg/ml by Nanodrop;

**Source:**

Rabbit

**Isotype:**

IgG

**GenBank Accession Number:**

NM\_004360.5

**GeneID (NCBI):**

999

**UNIPROT ID:**

P12830-1

**Full Name:**

cadherin 1, type 1, E-cadherin (epithelial)

**Calculated MW:**

97 kDa

**Purification Method:**

Protein A purification

**CloneNo.:**

241098A7

## Applications

**Tested Applications:**

Sandwich ELISA, Indirect ELISA, Sample test

**Species Specificity:**

human

## Product Information

83991-5-PBS targets E-cadherin as part of a matched antibody pair:

MP00187-7: 83991-6-PBS capture and 83991-5-PBS detection (validated in Sandwich ELISA)

Unconjugated rabbit recombinant monoclonal antibody in PBS only (BSA and azide free) storage buffer at a concentration of 1 mg/mL, ready for conjugation. Created using Proteintech's proprietary in-house recombinant technology. Recombinant production enables unrivalled batch-to-batch consistency, easy scale-up, and future security of supply.

This conjugation ready format makes antibodies ideal for use in many applications including: ELISAs, multiplex assays requiring matched pairs, mass cytometry, and multiplex imaging applications. Antibody use should be optimized by the end user for each application and assay.

## Storage

**Storage:**

Store at -80°C.

**Storage Buffer:**

PBS Only

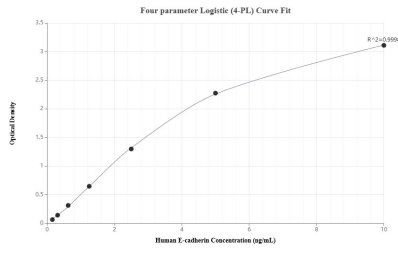
For technical support and original validation data for this product please contact:

T: 1 (888) 4PTGLAB (1-888-478-4522) (toll free in USA), or 1(312) 455-8498 (outside USA)

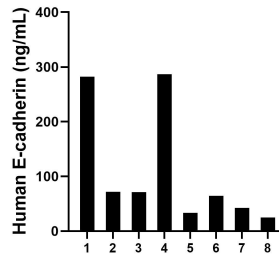
E: [proteintech@ptglab.com](mailto:proteintech@ptglab.com)  
W: [ptglab.com](http://ptglab.com)

**This product is exclusively available under Proteintech Group brand and is not available to purchase from any other manufacturer.**

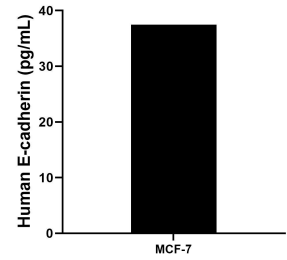
## Selected Validation Data



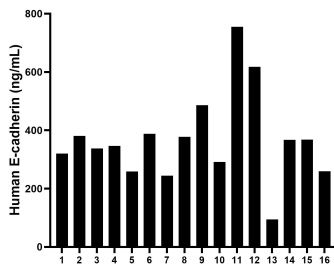
Sandwich ELISA standard curve of MP00187-7, Human E-cadherin Recombinant Matched Antibody Pair - PBS only. 83991-6-PBS was coated to a plate as the capture antibody and incubated with serial dilutions of standard Eg1112. 83991-5-PBS was HRP conjugated as the detection antibody. Range: 0.156-10 ng/mL



Urine of eight individual healthy human donors was measured. The human E-cadherin concentration of detected samples was determined to be 109.49 ng/mL with a range of 24.87 - 286.93 ng/mL



MCF-7 human breast cancer cells ( $5 \times 10^6$  cells/mL) were cultured in DMEM and 10% fetal bovine serum, 4 mM L-glutamine, 4500 mg/L glucose, 100 U/mL penicillin, and 100  $\mu$ g/mL streptomycin sulfate. An aliquot of the cell culture supernate was removed, assayed for human E-cadherin, and measured 37.5 pg/mL



Serum of sixteen individual healthy human donors was measured. The human E-cadherin concentration of detected samples was determined to be 368.32 ng/mL with a range of 94.16 - 755.34 ng/mL