

For Research Use Only

DPYSL2 Recombinant antibody, PBS Only (Capture)

Catalog Number: 83990-3-PBS



Basic Information

Catalog Number: 83990-3-PBS	GenBank Accession Number: BC067109	Purification Method: Protein A purification
Size: 100ug , Concentration: 1 mg/ml by Nanodrop;	GeneID (NCBI): 1808	CloneNo.: 241088D3
Source: Rabbit	UNIPROT ID: Q16555	
Isotype: IgG	Full Name: dihydropyrimidinase-like 2	
Immunogen Catalog Number: AG5987	Calculated MW: 62 kDa	

Applications

Tested Applications:
Sandwich ELISA, Indirect ELISA, Sample test

Species Specificity:
human

Product Information

83990-3-PBS targets DPYSL2 as part of a matched antibody pair:

MP00886-2: 83990-3-PBS capture and 83990-4-PBS detection (validated in Sandwich ELISA)

Unconjugated rabbit recombinant monoclonal antibody in PBS only (BSA and azide free) storage buffer at a concentration of 1 mg/mL, ready for conjugation. Created using Proteintech's proprietary in-house recombinant technology. Recombinant production enables unrivalled batch-to-batch consistency, easy scale-up, and future security of supply.

This conjugation ready format makes antibodies ideal for use in many applications including: ELISAs, multiplex assays requiring matched pairs, mass cytometry, and multiplex imaging applications. Antibody use should be optimized by the end user for each application and assay.

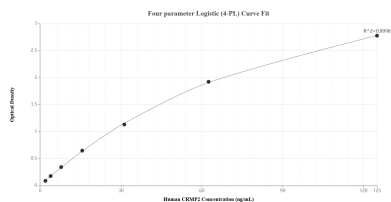
Storage

Storage:
Store at -80°C.
Storage Buffer:
PBS only, pH7.3

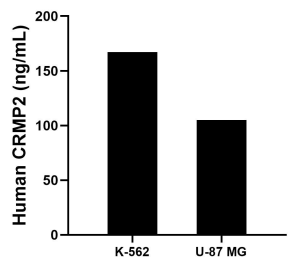
For technical support and original validation data for this product please contact:
T: 1 (888) 4PTGLAB (1-888-478-4522) (toll free in USA), or 1(312) 455-8498 (outside USA)
E: proteintech@ptglab.com
W: ptglab.com

This product is exclusively available under Proteintech Group brand and is not available to purchase from any other manufacturer.

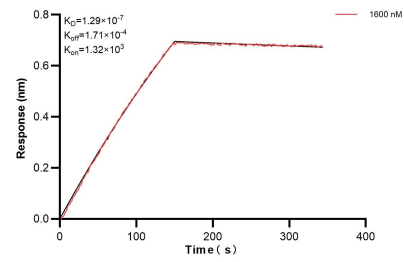
Selected Validation Data



Sandwich ELISA standard curve of MP00886-2, Human CRMP2 Recombinant Matched Antibody Pair - PBS only. 83990-3-PBS was coated to a plate as the capture antibody and incubated with serial dilutions of standard Ag5987. 83990-4-PBS was HRP conjugated as the detection antibody. Range: 1.95-125 ng/mL.



The mean CRMP2 concentration was determined to be 167.28 ng/mL in K-562 cell extract based on a 2.10 mg/mL extract load and 105.42 ng/mL in U-87 MG cell extract based on a 3.40 mg/mL extract load.



Biolayer interferometry (BLI) kinetic assay of 83990-3-PBS against Human DPYSL2 was performed. The affinity constant is 129 nM.