

For Research Use Only

AGXT2L1 Recombinant antibody

Catalog Number: 83984-6-RR



Basic Information

Catalog Number: 83984-6-RR	GenBank Accession Number: BC022526	Purification Method: Protein A purification
Size: 100ul , Concentration: 300 ug/ml by Nanodrop;	GeneID (NCBI): 64850	CloneNo.: 241119C4
Source: Rabbit	UNIPROT ID: Q8TBG4	Recommended Dilutions: WB 1:1000-1:6000
Isotype: IgG	Full Name: alanine-glyoxylate aminotransferase 2-like 1	
Immunogen Catalog Number: AG10584	Calculated MW: 499 aa, 56 kDa	
	Observed MW: 50-55 kDa	

Applications

Tested Applications: WB, ELISA	Positive Controls: WB : mouse liver tissue, rat liver tissue
Species Specificity: human, mouse, rat	

Background Information

Alanine-glyoxylate aminotransferase 2-like 1 (AGXT2L1), also called ethanolamine phosphate phospholyase (ETNPPL), is a brain enzyme, so-named after its similarity to AGXT2 (36% sequence identity), that may be involved in the pathogenesis of severe neuropsychiatric disturbances (PMID: 23761375). AGXT2L1 is significantly down-regulated in cancerous tissues and may be a tumor suppressor (PMID: 26294768).

Storage

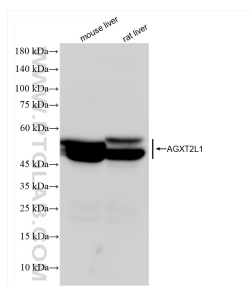
Storage:
Store at -20°C. Stable for one year after shipment.
Storage Buffer:
PBS with 0.02% sodium azide and 50% glycerol pH 7.3.
Aliquoting is unnecessary for -20°C storage

*** 20ul sizes contain 0.1% BSA

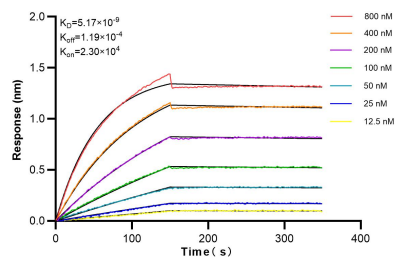
For technical support and original validation data for this product please contact:
T: 1 (888) 4PTGLAB (1-888-478-4522) (toll free in USA), or 1(312) 455-8498 (outside USA)
E: proteintech@ptglab.com
W: ptglab.com

This product is exclusively available under Proteintech Group brand and is not available to purchase from any other manufacturer.

Selected Validation Data



Various lysates were subjected to SDS PAGE followed by western blot with 83984-6-RR (AGXT2L1 antibody) at dilution of 1:3000 incubated at room temperature for 1.5 hours.



Biolayer interferometry (BLI) kinetic assays of 83984-6-RR against Human AGXT2L1 were performed. The affinity constant is 5.17 nM.