

For Research Use Only

AGXT2L1 Recombinant antibody, PBS Only

Catalog Number: 83984-6-PBS



Basic Information

Catalog Number: 83984-6-PBS	GenBank Accession Number: BC022526	Purification Method: Protein A purification
Size: 100ug, Concentration: 1 mg/ml by Nanodrop;	GeneID (NCBI): 64850	CloneNo.: 241119C4
Source: Rabbit	UNIPROT ID: Q8TBG4	
Isotype: IgG	Full Name: alanine-glyoxylate aminotransferase 2-like 1	
Immunogen Catalog Number: AG10584	Calculated MW: 499 aa, 56 kDa	
	Observed MW: 50-55 kDa	

Applications

Tested Applications:
WB, Indirect ELISA

Species Specificity:
human, mouse, rat

Background Information

Alanine-glyoxylate aminotransferase 2-like 1 (AGXT2L1), also called ethanolamine phosphate phospholyase (ETNPPL), is a brain enzyme, so-named after its similarity to AGXT2 (36% sequence identity), that may be involved in the pathogenesis of severe neuropsychiatric disturbances (PMID: 23761375). AGXT2L1 is significantly down-regulated in cancerous tissues and may be a tumor suppressor (PMID: 26294768).

Storage

Storage:
Store at -80°C.

Storage Buffer:
PBS Only

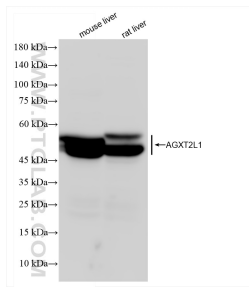
For technical support and original validation data for this product please contact:

T: 1 (888) 4PTGLAB (1-888-478-4522) (toll free in USA), or 1(312) 455-8498 (outside USA)

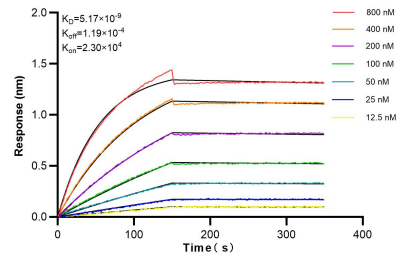
E: proteintech@ptglab.com
W: ptglab.com

This product is exclusively available under Proteintech Group brand and is not available to purchase from any other manufacturer.

Selected Validation Data



Various lysates were subjected to SDS PAGE followed by western blot with 83984-6-RR (AGXT2L1 antibody) at dilution of 1:3000 incubated at room temperature for 1.5 hours. This data was developed using the same antibody clone with 83984-6-PBS in a different storage buffer formulation.



Biolayer interferometry (BLI) kinetic assays of 83984-6-RR against Human AGXT2L1 were performed. The affinity constant is 5.17 nM.