

For Research Use Only

Mouse Serpin E1/PAI-1 Recombinant antibody, PBS Only (Capture/Detector)

Catalog Number: 83980-3-PBS



Basic Information

Catalog Number:

83980-3-PBS

Size:

100ug, Concentration: 1 mg/ml by Nanodrop;

Source:

Rabbit

Isotype:

IgG

GenBank Accession Number:

GeneID (NCBI):

18787

UNIPROT ID:

P22777

Full Name:

serine (or cysteine) peptidase inhibitor, clade E, member 1

Calculated MW:

45kDa

Observed MW:

45-50 kDa

Purification Method:

Protein A purification

CloneNo.:

241130G6

Applications

Tested Applications:

WB, Cytometric bead array, Sandwich ELISA, Indirect ELISA, Sample test

Species Specificity:

mouse

Product Information

83980-3-PBS targets Serpin E1/PAI-1 as part of a matched antibody pair:

MP00875-1: 83980-3-PBS capture and 83980-2-PBS detection (validated in Cytometric bead array)

MP00875-4: 83980-2-PBS capture and 83980-3-PBS detection (validated in Sandwich ELISA)

Unconjugated rabbit recombinant monoclonal antibody in PBS only (BSA and azide free) storage buffer at a concentration of 1 mg/mL, ready for conjugation. Created using Proteintech's proprietary in-house recombinant technology. Recombinant production enables unrivalled batch-to-batch consistency, easy scale-up, and future security of supply.

This conjugation ready format makes antibodies ideal for use in many applications including: ELISAs, multiplex assays requiring matched pairs, mass cytometry, and multiplex imaging applications. Antibody use should be optimized by the end user for each application and assay.

Background Information

SERPINE1, also named as Plasminogen activator inhibitor type 1 (PAI-1), is a member of the serine protease inhibitor (SERPIN) superfamily. PAI-1 is the principal inhibitor of tPA and uPA, and hence is an inhibitor of fibrinolysis. Defects in this gene are the cause of plasminogen activator inhibitor-1 deficiency (PAI-1 deficiency), and high concentrations of the gene product are associated with thrombophilia.

Storage

Storage:

Store at -80°C.

Storage Buffer:

PBS Only

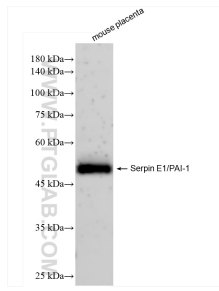
For technical support and original validation data for this product please contact:

T: 1 (888) 4PTGLAB (1-888-478-4522) (toll free in USA), or 1(312) 455-8498 (outside USA)

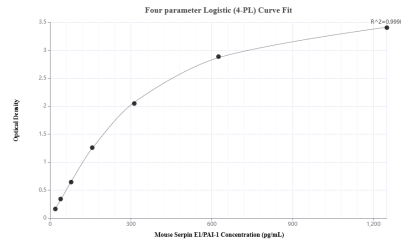
E: proteintech@ptglab.com
W: ptglab.com

This product is exclusively available under Proteintech Group brand and is not available to purchase from any other manufacturer.

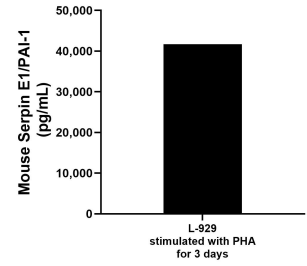
Selected Validation Data



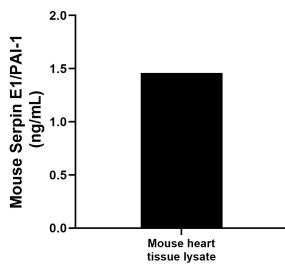
mouse placenta tissue was subjected to SDS PAGE followed by western blot with 83980-3-RR (Serpin E1/PAI-1 antibody) at dilution of 1:2000 incubated at room temperature for 1.5 hours. This data was developed using the same antibody clone with 83980-3-PBS in a different storage buffer formulation.



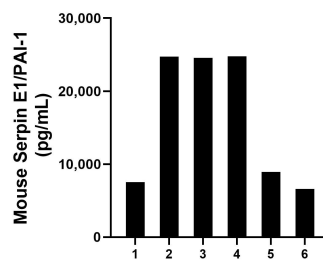
Sandwich ELISA standard curve of MP00875-4, Mouse Serpin E1/PAI-1 Recombinant Matched Antibody Pair - PBS only. 83980-2-PBS was coated to a plate as the capture antibody and incubated with serial dilutions of standard Eg1100. 83980-3-PBS was HRP conjugated as the detection antibody. Range: 19.5-1250 pg/mL



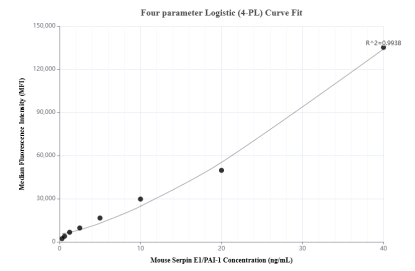
L-929 mouse fibroblast cells (1×10^6 cells/mL) were cultured for 3 days in MEM supplemented with 10% equine serum and stimulated with 10 μ g/mL PHA. The cell culture supernatants was assayed for mouse Serpin E1/PAI-1 and measured 41,666.9 pg/mL



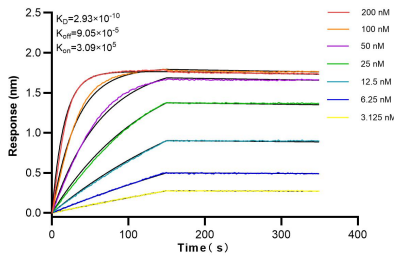
Mouse heart tissue lyaste was measured. The mouse Serpin E1/PAI-1 concentration of detected samples was determined to be 1.46 ng/mL (based on a 4.6 mg/mL extract load).



Serum of six mice was measured. The mouse Serpin E1/PAI-1 concentration of detected samples was determined to be 16,187.9 pg/mL with a range of 6,614.7 - 24,758.6 pg/mL



Cytometric bead array standard curve of MP00875-1, MOUSE Serpin E1/PAI-1 Recombinant Matched Antibody Pair, PBS Only. Capture antibody: 83980-3-PBS. Detection antibody: 83980-2-PBS. Standard: Eg1100. Range: 0.313-40 ng/mL



Biolayer interferometry (BLI) kinetic assays of 83980-3-RR against Mouse Serpin E1/PAI-1 were performed. The affinity constant is 0.293 nM.