

For Research Use Only

SLC38A2 Recombinant antibody, PBS Only (Detector)

Catalog Number:83968-3-PBS



Basic Information

Catalog Number: 83968-3-PBS	GenBank Accession Number: BC040342	Purification Method: Protein A purification
Size: 100ug, Concentration: 1 mg/ml by Nanodrop;	GeneID (NCBI): 54407	CloneNo.: 241059G3
Source: Rabbit	UNIPROT ID: Q96QD8	
Isotype: IgG	Full Name: solute carrier family 38, member 2	
Immunogen Catalog Number: AG23082		

Applications

Tested Applications:
Cytometric bead array, Sandwich ELISA, Indirect ELISA, Sample test

Species Specificity:
human

Product Information

83968-3-PBS targets SLC38A2 as part of a matched antibody pair.

MP00889-3: 83968-4-PBS capture and 83968-3-PBS detection (validated in Cytometric bead array, Sandwich ELISA)

Unconjugated rabbit recombinant monoclonal antibody in PBS only (BSA and azide free) storage buffer at a concentration of 1 mg/mL, ready for conjugation. Created using Proteintech's proprietary in-house recombinant technology. Recombinant production enables unrivalled batch-to-batch consistency, easy scale-up, and future security of supply.

This conjugation ready format makes antibodies ideal for use in many applications including: ELISAs, multiplex assays requiring matched pairs, mass cytometry, and multiplex imaging applications. Antibody use should be optimized by the end user for each application and assay.

Storage

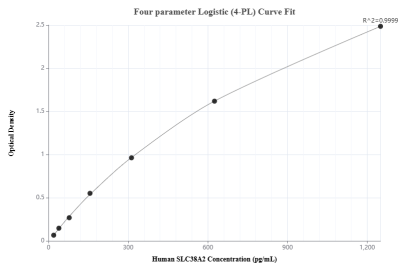
Storage:
Store at -80°C.

Storage Buffer:
PBS Only

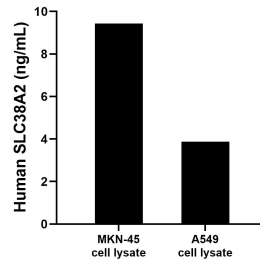
For technical support and original validation data for this product please contact:
T: 1 (888) 4PTGLAB (1-888-478-4522) (toll free in USA), or 1(312) 455-8498 (outside USA) E: proteintech@ptglab.com
W: ptglab.com

This product is exclusively available under Proteintech Group brand and is not available to purchase from any other manufacturer.

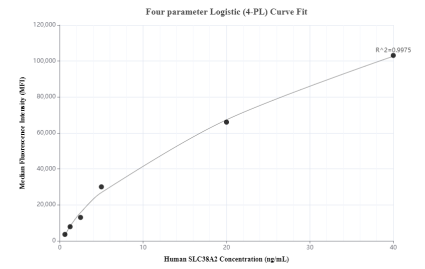
Selected Validation Data



Sandwich ELISA standard curve of MP00889-3, Human SLC38A2 Recombinant Matched Antibody Pair - PBS only. 83968-4-PBS was coated to a plate as the capture antibody and incubated with serial dilutions of standard Ag23082. 83968-3-PBS was HRP conjugated as the detection antibody. Range: 19.5-1250 pg/mL



MKN-45 and A549 cell lysate were measured. The human SLC38A2 concentration of detected samples was determined to be 9.43 ng/mL (based on a 9.5 mg/mL extract load) in MKN-45 cell lysate and 3.88 ng/mL (based on a 1.0 mg/mL extract load) in A549 cell lysate.



Cytometric bead array standard curve of MP00889-3, SLC38A2 Recombinant Matched Antibody Pair, PBS Only. Capture antibody: 83968-4-PBS. Detection antibody: 83968-3-PBS. Standard: Ag23082. Range: 0.625-40 ng/mL