

For Research Use Only

# RAB11FIP5 Recombinant antibody, PBS Only (Detector)

Catalog Number:83939-2-PBS



## Basic Information

<b>Catalog Number:</b> 83939-2-PBS	<b>GenBank Accession Number:</b> BC035013	<b>Purification Method:</b> Protein A purification
<b>Size:</b> 100ug, Concentration: 1 mg/ml by Nanodrop;	<b>GeneID (NCBI):</b> 26056	<b>CloneNo.:</b> 241038E11
<b>Source:</b> Rabbit	<b>UNIPROT ID:</b> Q9BXF6	
<b>Isotype:</b> IgG	<b>Full Name:</b> RAB11 family interacting protein 5 (class I)	
<b>Immunogen Catalog Number:</b> AG6128	<b>Calculated MW:</b> 70 kDa	
	<b>Observed MW:</b> 70 kDa	

## Applications

**Tested Applications:**  
WB, Cytometric bead array, Indirect ELISA

**Species Specificity:**  
human

## Product Information

83939-2-PBS targets RAB11FIP5 as part of a matched antibody pair.

MP00924-2: 83939-3-PBS capture and 83939-2-PBS detection (validated in Cytometric bead array)

Unconjugated rabbit recombinant monoclonal antibody in PBS only (BSA and azide free) storage buffer at a concentration of 1 mg/mL, ready for conjugation. Created using Proteintech's proprietary in-house recombinant technology. Recombinant production enables unrivalled batch-to-batch consistency, easy scale-up, and future security of supply.

This conjugation ready format makes antibodies ideal for use in many applications including: ELISAs, multiplex assays requiring matched pairs, mass cytometry, and multiplex imaging applications. Antibody use should be optimized by the end user for each application and assay.

## Background Information

Rab11 family-interacting protein 5 (Rab11fip5) is an adaptor protein that binds to the small GTPase Rab11, which has an important function in endosome recycling and trafficking of cellular proteins to the plasma membrane. Rab11fip5 is involved in many cellular processes, such as cytoskeleton rearrangement, iron uptake and exocytosis in neuroendocrine cells, and is also known as a candidate gene for autism-spectrum disorder.

## Storage

**Storage:**  
Store at -80°C.

**Storage Buffer:**  
PBS Only

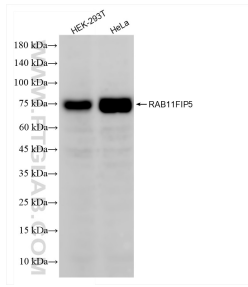
For technical support and original validation data for this product please contact:

T: 1 (888) 4PTGLAB (1-888-478-4522) (toll free in USA), or 1(312) 455-8498 (outside USA)

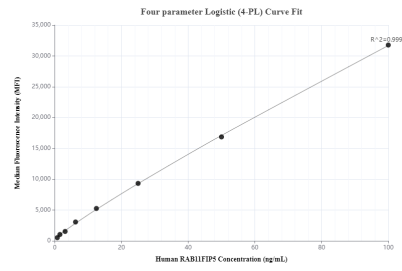
E: [proteintech@ptglab.com](mailto:proteintech@ptglab.com)  
W: [ptglab.com](http://ptglab.com)

**This product is exclusively available under Proteintech Group brand and is not available to purchase from any other manufacturer.**

## Selected Validation Data



Various lysates were subjected to SDS PAGE followed by western blot with 83939-2-RR (RAB11FIP5 antibody) at dilution of 1:1000 incubated at room temperature for 1.5 hours. This data was developed using the same antibody clone with 83939-2-PBS in a different storage buffer formulation.



Cytometric bead array standard curve of MP00924-2, RAB11FIP5 Recombinant Matched Antibody Pair, PBS Only. Capture antibody: 83939-3-PBS. Detection antibody: 83939-2-PBS. Standard: Ag6128. Range: 0.781-100 ng/mL.