

For Research Use Only

CXCL1 Recombinant antibody, PBS Only (Capture/Detector)

Catalog Number: 83937-2-PBS



Basic Information

Catalog Number: 83937-2-PBS	GenBank Accession Number: BC011976	Purification Method: Protein A purification
Size: 100ug, Concentration: 1 mg/ml by Nanodrop;	GeneID (NCBI): 2919	CloneNo.: 240990G2
Source: Rabbit	UNIPROT ID: P09341	
Isotype: IgG	Full Name: chemokine (C-X-C motif) ligand 1 (melanoma growth stimulating activity, alpha)	
Immunogen Catalog Number: AG2917	Calculated MW: 8 kDa to 14 kDa	

Applications

Tested Applications:
Cytometric bead array, Sandwich ELISA, Indirect ELISA,
Sample test

Species Specificity:
human

Product Information

83937-2-PBS targets CXCL1 as part of a matched antibody pair:

MP00922-1: 83937-2-PBS capture and 83937-1-PBS detection (validated in Cytometric bead array)

MP00922-2: 83937-1-PBS capture and 83937-2-PBS detection (validated in Sandwich ELISA)

Unconjugated rabbit recombinant monoclonal antibody in PBS only (BSA and azide free) storage buffer at a concentration of 1 mg/mL, ready for conjugation. Created using Proteintech's proprietary in-house recombinant technology. Recombinant production enables unrivalled batch-to-batch consistency, easy scale-up, and future security of supply.

This conjugation ready format makes antibodies ideal for use in many applications including: ELISAs, multiplex assays requiring matched pairs, mass cytometry, and multiplex imaging applications. Antibody use should be optimized by the end user for each application and assay.

Storage

Storage:
Store at -80°C.
Storage Buffer:
PBS Only

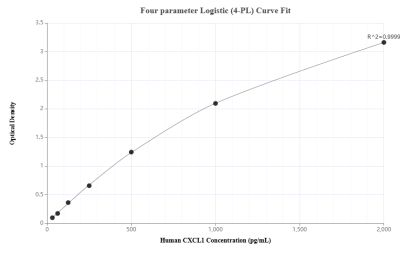
For technical support and original validation data for this product please contact:

T: 1 (888) 4PTGLAB (1-888-478-4522) (toll free
in USA), or 1(312) 455-8498 (outside USA)

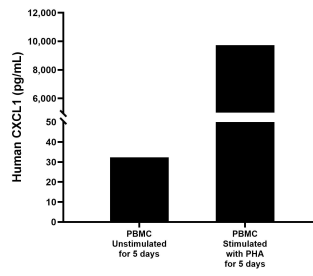
E: proteintech@ptglab.com
W: ptglab.com

This product is exclusively available under Proteintech Group brand and is not available to purchase from any other manufacturer.

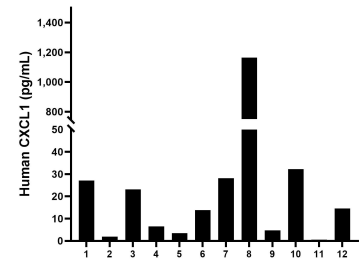
Selected Validation Data



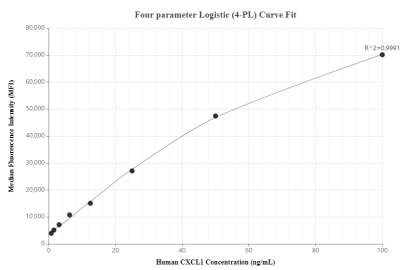
Sandwich ELISA standard curve of MP00922-2, Human CXCL1 Recombinant Matched Antibody Pair - PBS only. 83937-1-PBS was coated to a plate as the capture antibody and incubated with serial dilutions of standard Ag2917. 83937-2-PBS was biotinylated as the detection antibody. Range: 31.25-2000 pg/mL



Human peripheral blood mononuclear cells (PBMC) were cultured unstimulated or stimulated with 10 µg/mL PHA for 5 days. The mean CXCL1 concentration was determined to be 32.4 pg/mL in unstimulated PBMC supernatant, 9728.4 pg/mL in PHA stimulated PBMC supernatant.



Serum of twelve individual healthy human donors was measured. The human CXCL1 concentration of detected samples was determined to be 110.0 pg/mL with a range of 0.6 - 1,164.0 pg/mL.



Cytometric bead array standard curve of MP00922-1, CXCL1 Recombinant Matched Antibody Pair, PBS Only. Capture antibody: 83937-2-PBS. Detection antibody: 83937-1-PBS. Standard: Ag2917. Range: 0.78-100 ng/mL