

For Research Use Only

CXCL1 Recombinant antibody, PBS Only (Capture/Detector)

Catalog Number: 83937-1-PBS



Basic Information

| | | |
|---|---|---|
| Catalog Number: 83937-1-PBS | GenBank Accession Number: BC011976 | Purification Method: Protein A purification |
| Size: 100ug, Concentration: 1 mg/ml by Nanodrop; | GeneID (NCBI): 2919 | CloneNo.: 240990E5 |
| Source: Rabbit | UNIPROT ID: P09341 | |
| Isotype: IgG | Full Name: chemokine (C-X-C motif) ligand 1 (melanoma growth stimulating activity, alpha) | |
| Immunogen Catalog Number: AG2917 | Calculated MW: 8 kDa to 14 kDa | |

Applications

Tested Applications:
Cytometric bead array, Sandwich ELISA, Indirect ELISA,
Sample test

Species Specificity:
human

Product Information

83937-1-PBS targets CXCL1 as part of a matched antibody pair:

MP00922-1: 83937-2-PBS capture and 83937-1-PBS detection (validated in Cytometric bead array)

MP00922-2: 83937-1-PBS capture and 83937-2-PBS detection (validated in Sandwich ELISA)

Unconjugated rabbit recombinant monoclonal antibody in PBS only (BSA and azide free) storage buffer at a concentration of 1 mg/mL, ready for conjugation. Created using Proteintech's proprietary in-house recombinant technology. Recombinant production enables unrivalled batch-to-batch consistency, easy scale-up, and future security of supply.

This conjugation ready format makes antibodies ideal for use in many applications including: ELISAs, multiplex assays requiring matched pairs, mass cytometry, and multiplex imaging applications. Antibody use should be optimized by the end user for each application and assay.

Background Information

CXCL1 is a member of CXC family and also known as keratinocyte-derived chemokines (KC) or growth-related oncogene (GRO). CXCL1 is expressed by macrophages, neutrophils and epithelial cells. CXCL1 binding specifically to the CXC chemokine receptor CXCR2, is involved in fibrogenesis and angiogenesis. This protein also plays a role in inflammation and as a chemoattractant for neutrophils. CXCL1 is upregulated in some types of human cancer, including colorectal, bladder, breast, prostate and skin cancers.

Storage

Storage:
Store at -80°C.
Storage Buffer:
PBS Only

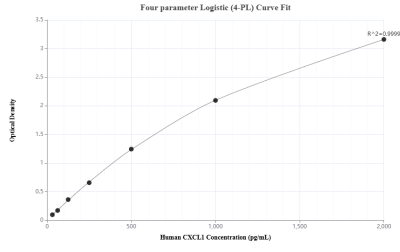
For technical support and original validation data for this product please contact:

T: 1 (888) 4PTGLAB (1-888-478-4522) (toll free
in USA), or 1(312) 455-8498 (outside USA)

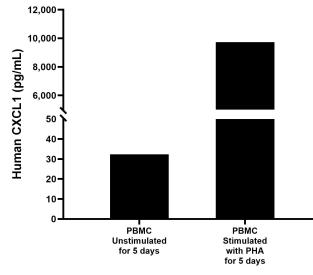
E: proteintech@ptglab.com
W: ptglab.com

This product is exclusively available under Proteintech Group brand and is not available to purchase from any other manufacturer.

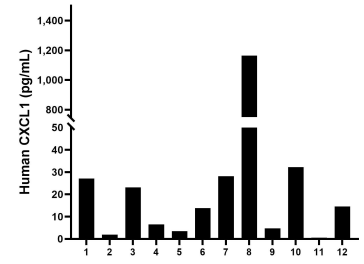
Selected Validation Data



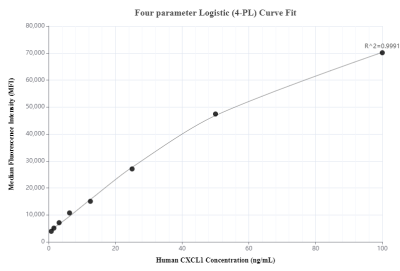
Sandwich ELISA standard curve of MP00922-2, Human CXCL1 Recombinant Matched Antibody Pair - PBS only. 83937-1-PBS was coated to a plate as the capture antibody and incubated with serial dilutions of standard Ag2917. 83937-2-PBS was biotinylated as the detection antibody. Range: 31.25-2000 pg/mL



Human peripheral blood mononuclear cells (PBMC) were cultured unstimulated or stimulated with 10 µg/mL PHA for 5 days. The mean CXCL1 concentration was determined to be 32.4 pg/mL in unstimulated PBMC supernatant, 9,728.4 pg/mL in PHA stimulated PBMC supernatant.



Serum of twelve individual healthy human donors was measured. The human CXCL1 concentration of detected samples was determined to be 110.0 pg/mL with a range of 0.6 - 1,164.0 pg/mL.



Cytometric bead array standard curve of MP00922-1, CXCL1 Recombinant Matched Antibody Pair, PBS Only. Capture antibody: 83937-2-PBS. Detection antibody: 83937-1-PBS. Standard: Ag2917. Range: 0.78-100 ng/mL