

For Research Use Only

# transgelin/SM22 Recombinant antibody

Catalog Number: 83922-2-RR



## Basic Information

|  |  |  |
|--|--|--|
| <b>Catalog Number:</b><br>83922-2-RR                           | <b>GenBank Accession Number:</b><br>BC004927 | <b>Purification Method:</b><br>Protein A purification                                    |
| <b>Size:</b><br>100ul , Concentration: 1000 µg/ml by Nanodrop; | <b>GeneID (NCBI):</b><br>6876                | <b>CloneNo.:</b><br>240864A11  |
| <b>Source:</b><br>Rabbit                                       | <b>UNIPROT ID:</b><br>Q01995                 | <b>Recommended Dilutions:</b><br>WB 1:5000-1:50000<br>IHC 1:50-1:500<br>IF-P 1:200-1:800 |
| <b>Isotype:</b><br>IgG   | <b>Full Name:</b><br>transgelin              |  |
| <b>Immunogen Catalog Number:</b><br>AG0764                     | <b>Calculated MW:</b><br>22 kDa              |  |
|  | <b>Observed MW:</b><br>19-22 kDa             |  |

## Applications

**Tested Applications:**  
WB, IHC, IF-P, ELISA

**Species Specificity:**  
human, mouse, rat

**Note-IHC: suggested antigen retrieval with TE buffer pH 9.0; (\*) Alternatively, antigen retrieval may be performed with citrate buffer pH 6.0**

**Positive Controls:**

**WB :** mouse colon tissue, rat colon tissue, mouse stomach tissue, rat stomach tissue

**IHC :** mouse heart tissue,

**IF-P :** mouse heart tissue,

## Background Information

The transgelin family is a protein group belonging to the 22kd actin-related calponin superfamily. Of all three isoforms, transgelin 1 is the best characterized. Transgelin 1, or SM22alpha, is a specific marker for differentiated smooth muscle cells. Transgelin 2, also known as SM22 beta, is expressed by both smooth and non-smooth muscle cells in a temporally and spatially regulated pattern. Transgelin 3, also known as NP25, is only found in highly differentiated neuronal cells. This antibody was generated against full-length transgelin 1 protein. It can cross-react with other two transgenes based on the sequence similarity.

## Storage

**Storage:**  
Store at -20°C. Stable for one year after shipment.  
**Storage Buffer:**  
PBS with 0.02% sodium azide and 50% glycerol pH 7.3.  
Aliquoting is unnecessary for -20°C storage

**\*\*\* 20ul sizes contain 0.1% BSA**

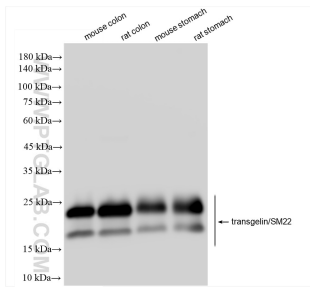
For technical support and original validation data for this product please contact:

T: 1 (888) 4PTGLAB (1-888-478-4522) (toll free in USA), or 1(312) 455-8498 (outside USA)

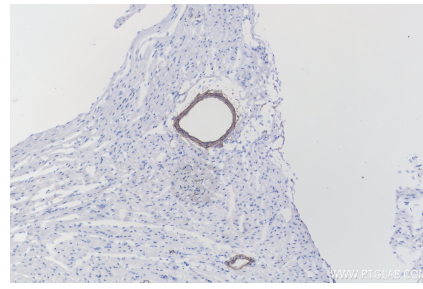
E: [proteintech@ptglab.com](mailto:proteintech@ptglab.com)  
W: [ptglab.com](http://ptglab.com)

**This product is exclusively available under Proteintech Group brand and is not available to purchase from any other manufacturer.**

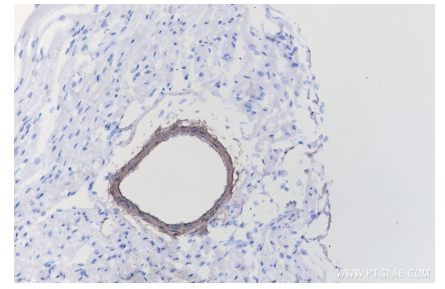
## Selected Validation Data



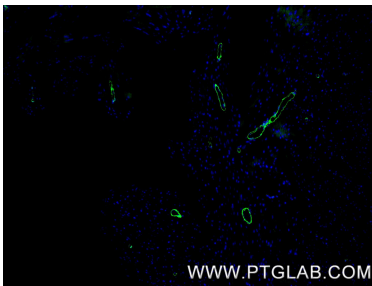
Various lysates were subjected to SDS PAGE followed by western blot with 83922-2-RR (transgelin/SM22 antibody) at dilution of 1:10000 incubated at room temperature for 1.5 hours.



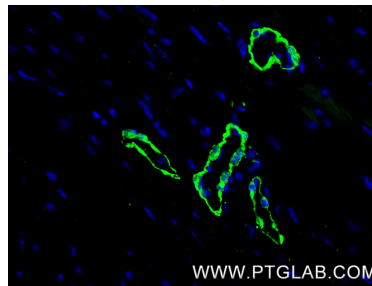
Immunohistochemical analysis of paraffin-embedded mouse heart tissue slide using 83922-2-RR (transgelin/SM22 antibody) at dilution of 1:200 (under 10x lens). Heat mediated antigen retrieval with Tris-EDTA buffer (pH 9.0).



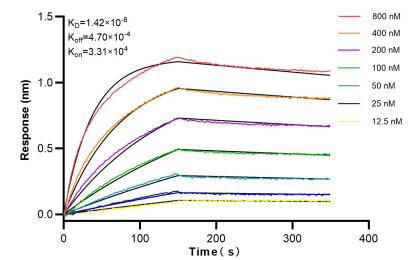
Immunohistochemical analysis of paraffin-embedded mouse heart tissue slide using 83922-2-RR (transgelin/SM22 antibody) at dilution of 1:200 (under 40x lens). Heat mediated antigen retrieval with Tris-EDTA buffer (pH 9.0).



Immunofluorescent analysis of (4% PFA) fixed paraffin-embedded mouse heart tissue using transgelin/SM22 antibody (83922-2-RR, Clone: 240864A11) at dilution of 1:400 and CoraLite®488-Conjugated Goat Anti-Rabbit IgG(H+L) (SA00013-2). Heat mediated antigen retrieval with Tris-EDTA buffer (pH 9.0).



Immunofluorescent analysis of (4% PFA) fixed paraffin-embedded mouse heart tissue using transgelin/SM22 antibody (83922-2-RR, Clone: 240864A11) at dilution of 1:400 and CoraLite®488-Conjugated Goat Anti-Rabbit IgG(H+L) (SA00013-2). Heat mediated antigen retrieval with Tris-EDTA buffer (pH 9.0).



Bi-layer interferometry (BLI) kinetic assays of 83922-2-RR against Human transgelin/SM22 were performed. The affinity constant is 14.2 nM.