

For Research Use Only

NUCB2/nesfatin-1 Recombinant antibody, PBS Only (Detector)

Catalog Number: 83917-2-PBS



Basic Information

Catalog Number: 83917-2-PBS	GenBank Accession Number: NM_005013	Purification Method: Protein A purification
Size: 100ug, Concentration: 1 mg/ml by Nanodrop;	GeneID (NCBI): 4925	CloneNo.: 241037D8
Source: Rabbit	UNIPROT ID: P80303	
Isotype: IgG	Full Name: nucleobindin 2	
Immunogen Catalog Number: AG25152	Calculated MW: 50 kDa	
	Observed MW: 45-50 kDa	

Applications

Tested Applications:
WB, FC (Intra), Cytometric bead array, Indirect ELISA

Species Specificity:
human, mouse, rat

Product Information

83917-2-PBS targets NUCB2/nesfatin-1 as part of a matched antibody pair:

MP00864-3: 83917-1-PBS capture and 83917-2-PBS detection (validated in Cytometric bead array)

Unconjugated rabbit recombinant monoclonal antibody in PBS only (BSA and azide free) storage buffer at a concentration of 1 mg/mL, ready for conjugation. Created using Proteintech's proprietary in-house recombinant technology. Recombinant production enables unrivalled batch-to-batch consistency, easy scale-up, and future security of supply.

This conjugation ready format makes antibodies ideal for use in many applications including: ELISAs, multiplex assays requiring matched pairs, mass cytometry, and multiplex imaging applications. Antibody use should be optimized by the end user for each application and assay.

Background Information

NucB2, an anorexigenic molecule, is expressed mainly in the hypothalamus, particularly in the supraoptic nucleus (SON) and the paraventricular nucleus (PVN). NucB2 is also expressed in the subfornical organ (SFO). Because the SON and PVN are involved in body fluid regulation, NucB2 may be involved in dehydration-induced anorexia. NUCB2 is composed of a signal peptide of 24 amino acids in the N-terminal region and a protein structure containing 396 amino acids. Nesfatin-1 is an 82-amino-acid peptide hormone cleaved from nucleobindin2 (NUCB2).

Storage

Storage:
Store at -80°C.
Storage Buffer:
PBS Only

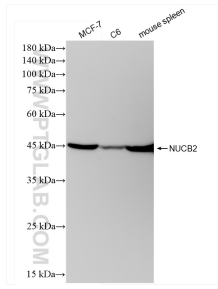
For technical support and original validation data for this product please contact:

T: 1 (888) 4PTGLAB (1-888-478-4522) (toll free in USA), or 1(312) 455-8498 (outside USA)

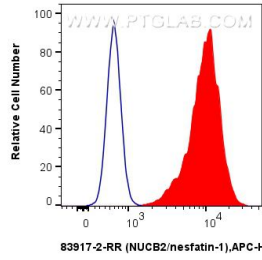
E: proteintech@ptglab.com
W: ptglab.com

This product is exclusively available under Proteintech Group brand and is not available to purchase from any other manufacturer.

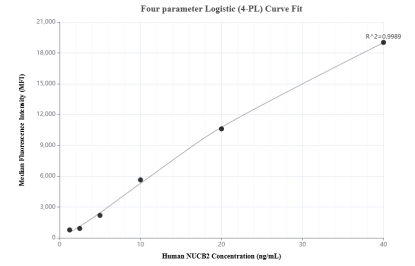
Selected Validation Data



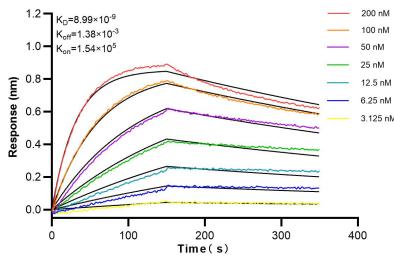
Various lysates were subjected to SDS PAGE followed by western blot with 83917-2-RR (NUCB2 antibody) at dilution of 1:10000 incubated at room temperature for 1.5 hours. This data was developed using the same antibody clone with 83917-2-PBS in a different storage buffer formulation.



1×10^6 HepG2 cells were intracellularly stained with 0.25 μ g NUCB2/nesfatin-1 Recombinant antibody (83917-2-RR, Clone:241037D8) and APC-Conjugated AffiniPure Goat Anti-Rabbit IgG(H+L) (red), or 0.25 μ g Isotype Control (blue). Cells were fixed with 4% PFA and permeabilized with Flow Cytometry Perm Buffer (PF00011-C). This data was developed using the same antibody clone with 83917-2-PBS in a different storage buffer formulation.



Cytometric bead array standard curve of MP00864-3, NUCB2/nesfatin-1 Recombinant Matched Antibody Pair, PBS Only. Capture antibody: 83917-1-PBS. Detection antibody: 83917-2-PBS. Standard: Ag25152. Range: 1.25-40 ng/mL.



Bi-layer interferometry (BLI) kinetic assays of 83917-2-RR against Human NUCB2/nesfatin-1 were performed. The affinity constant is 8.99 nM.