

For Research Use Only

NUCB2/nesfatin-1 Recombinant antibody, PBS Only (Capture)

Catalog Number: 83917-1-PBS



Basic Information

Catalog Number: 83917-1-PBS	GenBank Accession Number: NM_005013	Purification Method: Protein A purification
Size: 100ug, Concentration: 1 mg/ml by Nanodrop;	GeneID (NCBI): 4925	CloneNo.: 241037B1
Source: Rabbit	UNIPROT ID: P80303	
Isotype: IgG	Full Name: nucleobindin 2	
Immunogen Catalog Number: AG25152	Calculated MW: 50 kDa	

Applications

Tested Applications:
Cytometric bead array, Sandwich ELISA, Indirect ELISA, Sample test

Species Specificity:
human

Product Information

83917-1-PBS targets NUCB2/nesfatin-1 as part of a matched antibody pair:

MP00864-1: 83917-1-PBS capture and 83917-3-PBS detection (validated in Cytometric bead array)

MP00864-2: 83917-1-PBS capture and 83917-4-PBS detection (validated in Cytometric bead array)

MP00864-3: 83917-1-PBS capture and 83917-2-PBS detection (validated in Cytometric bead array)

MP00864-4: 83917-1-PBS capture and 83917-6-PBS detection (validated in Sandwich ELISA)

Unconjugated rabbit recombinant monoclonal antibody in PBS only (BSA and azide free) storage buffer at a concentration of 1 mg/mL, ready for conjugation. Created using Proteintech's proprietary in-house recombinant technology. Recombinant production enables unrivalled batch-to-batch consistency, easy scale-up, and future security of supply.

This conjugation ready format makes antibodies ideal for use in many applications including: ELISAs, multiplex assays requiring matched pairs, mass cytometry, and multiplex imaging applications. Antibody use should be optimized by the end user for each application and assay.

Storage

Storage:
Store at -80°C.

Storage Buffer:
PBS Only

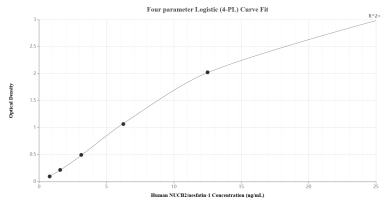
For technical support and original validation data for this product please contact:

T: 1 (888) 4PTGLAB (1-888-478-4522) (toll free in USA), or 1(312) 455-8498 (outside USA)

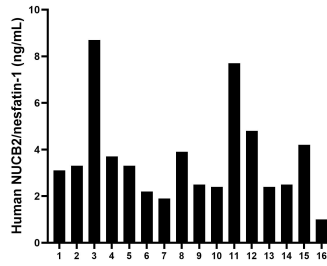
E: proteintech@ptglab.com
W: ptglab.com

This product is exclusively available under Proteintech Group brand and is not available to purchase from any other manufacturer.

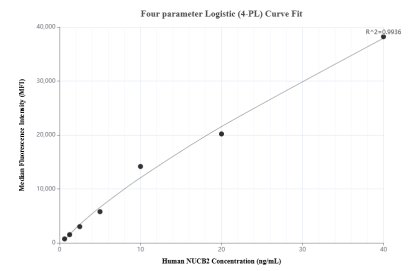
Selected Validation Data



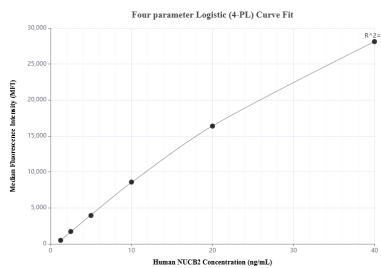
Sandwich ELISA standard curve of MP00864-4, Human NUCB2/nesfatin-1 Recombinant Matched Antibody Pair - PBS only. 83917-1-PBS was coated to a plate as the capture antibody and incubated with serial dilutions of standard Ag25152. 83917-6-PBS was HRP conjugated as the detection antibody. Range: 0.781-25 ng/mL



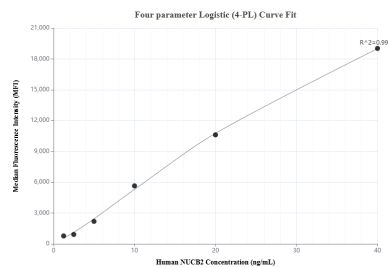
Serum of sixteen individual healthy human donors was measured. The NUCB2/nesfatin-1 concentration of detected samples was determined to be 3.61 ng/mL with a range of 1.05-8.70 ng/mL



Cytometric bead array standard curve of MP00864-1, NUCB2/nesfatin-1 Recombinant Matched Antibody Pair, PBS Only. Capture antibody: 83917-1-PBS. Detection antibody: 83917-3-PBS. Standard: Ag25152. Range: 0.625-40 ng/mL



Cytometric bead array standard curve of MP00864-2, NUCB2/nesfatin-1 Recombinant Matched Antibody Pair, PBS Only. Capture antibody: 83917-1-PBS. Detection antibody: 83917-4-PBS. Standard: Ag25152. Range: 1.25-40 ng/mL



Cytometric bead array standard curve of MP00864-3, NUCB2/nesfatin-1 Recombinant Matched Antibody Pair, PBS Only. Capture antibody: 83917-1-PBS. Detection antibody: 83917-2-PBS. Standard: Ag25152. Range: 1.25-40 ng/mL