

For Research Use Only

ZFP161 / ZBTB14 Recombinant antibody

Catalog Number:83909-5-RR



Basic Information

Catalog Number: 83909-5-RR	GenBank Accession Number: BC110519	Purification Method: Protein A purification
Size: 100ul , Concentration: 1000 ug/ml by Nanodrop;	GeneID (NCBI): 7541	CloneNo.: 240853G8
Source: Rabbit	UNIPROT ID: O43829	Recommended Dilutions: IF/ICC 1:200-1:800
Isotype: IgG	Full Name: zinc finger protein 161 homolog (mouse)	
Immunogen Catalog Number: AG16125	Calculated MW: 449 aa, 51 kDa	

Applications

Tested Applications: IF/ICC, FC (Intra), ELISA	Positive Controls: IF/ICC : A549 cells,
Species Specificity: human	

Background Information

ZBTB14, also named as :ZFP161, ZNF478, is a 449 amino acid protein, which interacts with ZBTB21. ZBTB14, is a transcriptional activator of the dopamine transporter (DAT), binding it's promoter at the consensus sequence 5'-CCTGCACAGTTCACGGA-3'. ZBTB14 Binds to 5'-d(GCC)(n)-3' trinucleotide repeats in promoter regions and acts as a repressor of the FMR1 gene.

Storage

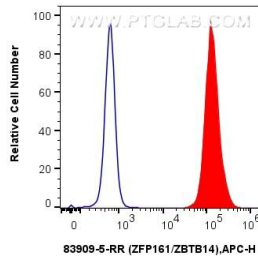
Storage:
Store at -20°C. Stable for one year after shipment.
Storage Buffer:
PBS with 0.02% sodium azide and 50% glycerol pH 7.3.
Aliquoting is unnecessary for -20°C storage

*** 20ul sizes contain 0.1% BSA

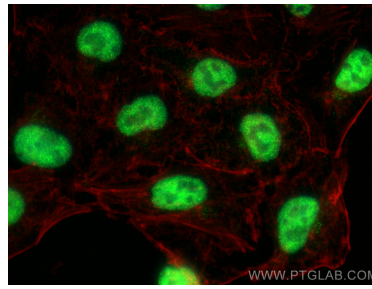
For technical support and original validation data for this product please contact:
T: 1 (888) 4PTGLAB (1-888-478-4522) (toll free in USA), or 1(312) 455-8498 (outside USA)
E: proteintech@ptglab.com
W: ptglab.com

This product is exclusively available under Proteintech Group brand and is not available to purchase from any other manufacturer.

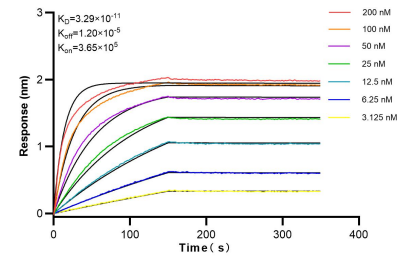
Selected Validation Data



1×10^6 MCF-7 cells were intracellularly stained with 0.25 μ g ZFP161 / ZBTB14 Recombinant antibody (83909-5-RR, Clone:240853G8) and APC-Conjugated AffiniPure Goat Anti-Rabbit IgG(H+L) (red), or 0.25 μ g Isotype Control (blue). Cells were fixed and permeabilized with True-Nuclear Transcription Factor Buffer Set.



Immunofluorescent analysis of (4% PFA) fixed A549 cells using ZFP161 / ZBTB14 antibody (83909-5-RR, Clone: 240853G8) at dilution of 1:400 and CoraLite[®]488-Conjugated Goat Anti-Rabbit IgG(H+L) (SA00013-2), CL594-Phalloidin (red).



Biolayer interferometry (BLI) kinetic assays of 83909-5-RR against Human ZFP161 / ZBTB14 were performed. The affinity constant is 32.9 pM.