

For Research Use Only

# B7-H6 Recombinant antibody, PBS Only

Catalog Number:83908-4-PBS



## Basic Information

**Catalog Number:**

83908-4-PBS

**Size:**

100ug , Concentration: 1 mg/ml by Nanodrop;

**Source:**

Rabbit

**Isotype:**

IgG

**GenBank Accession Number:**

BC136800

**GeneID (NCBI):**

374383

**UNIPROT ID:**

Q68D85

**Full Name:**

hypothetical protein  
DKFZp686O24166

**Calculated MW:**

51 kDa

**Observed MW:**

75-80 kDa

**Purification Method:**

Protein A purification

**CloneNo.:**

240808B2

## Applications

**Tested Applications:**

IF/ICC, ELISA

**Species Specificity:**

human

## Background Information

B7-H6, also known as NCR3LG1, is a member of the B7 family of immunoreceptors. It is a 454-aa-long type I transmembrane protein consisting of an extracellular region, a transmembrane segment, and a cytoplasmic domain which contains an immunoreceptor tyrosine-based inhibitory motif (ITIM), an SH2-binding domain, and an SH3-binding motif. B7-H6 triggers NKp30-mediated activation of human NK cells (PMID: 19528259). It has been reported that B7H6 is expressed in various types of tumor cells and plays a prominent role in natural killer cell immunosurveillance (PMID: 35697295). The apparent molecular weight of B7-H6 is larger than the calculated molecular weight of 51 kDa due to glycosylation (PMID: 19528259).

## Storage

**Storage:**

Store at -80°C.

**Storage Buffer:**

PBS Only

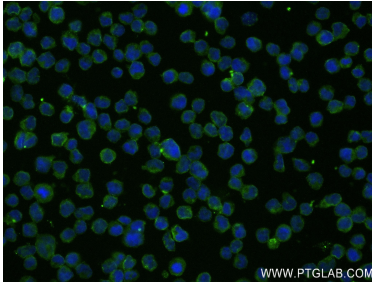
For technical support and original validation data for this product please contact:

T: 1 (888) 4PTGLAB (1-888-478-4522) (toll free in USA), or 1(312) 455-8498 (outside USA)

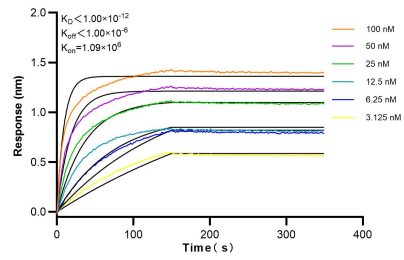
E: [proteintech@ptglab.com](mailto:proteintech@ptglab.com)  
W: [ptglab.com](http://ptglab.com)

**This product is exclusively available under Proteintech Group brand and is not available to purchase from any other manufacturer.**

## Selected Validation Data



Immunofluorescent analysis of (4% PFA) fixed Raji cells using B7H6 antibody (83908-4-RR, Clone: 240808B2) at dilution of 1:400 and CoraLite® 488-Conjugated AffiniPure Goat Anti-Rabbit IgG(H+L) (SA00013-2). This data was developed using the same antibody clone with 83908-4-PBS in a different storage buffer formulation.



Biolayer interferometry (BLI) kinetic assays of 83908-4-RR against Human B7H6 were performed. The affinity constant is below 1 pM.