

For Research Use Only

# Perilipin 1 Recombinant antibody, PBS Only (Capture/Detector)

Catalog Number: 83905-1-PBS



## Basic Information

<b>Catalog Number:</b> 83905-1-PBS	<b>GenBank Accession Number:</b> NM_001145311	<b>Purification Method:</b> Protein A purification
<b>Size:</b> 100ug , Concentration: 1 mg/ml by Nanodrop;	<b>GeneID (NCBI):</b> 5346	<b>CloneNo.:</b> 240994B2
<b>Source:</b> Rabbit	<b>UNIPROT ID:</b> O60240	
<b>Isotype:</b> IgG	<b>Full Name:</b> perilipin	
<b>Immunogen Catalog Number:</b> AG26426	<b>Calculated MW:</b> 56 kDa	

## Applications

**Tested Applications:**  
Cytometric bead array, Sandwich ELISA, Indirect ELISA, Sample test

**Species Specificity:**  
human

## Product Information

83905-1-PBS targets Perilipin 1 as part of a matched antibody pair:

MP00840-1: 83905-1-PBS capture and 83905-2-PBS detection (validated in Cytometric bead array)

MP00840-2: 83905-3-PBS capture and 83905-1-PBS detection (validated in Cytometric bead array, Sandwich ELISA)

Unconjugated rabbit recombinant monoclonal antibody in PBS only (BSA and azide free) storage buffer at a concentration of 1 mg/mL, ready for conjugation. Created using Proteintech's proprietary in-house recombinant technology. Recombinant production enables unrivalled batch-to-batch consistency, easy scale-up, and future security of supply.

This conjugation ready format makes antibodies ideal for use in many applications including: ELISAs, multiplex assays requiring matched pairs, mass cytometry, and multiplex imaging applications. Antibody use should be optimized by the end user for each application and assay.

## Storage

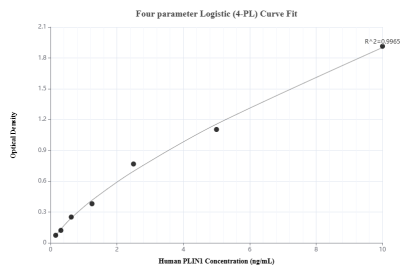
**Storage:**  
Store at -80°C.

**Storage Buffer:**  
PBS Only

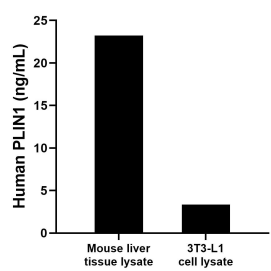
For technical support and original validation data for this product please contact:  
T: 1 (888) 4PTGLAB (1-888-478-4522) (toll free in USA), or 1(312) 455-8498 (outside USA)  
E: [proteintech@ptglab.com](mailto:proteintech@ptglab.com)  
W: [ptglab.com](http://ptglab.com)

This product is exclusively available under Proteintech Group brand and is not available to purchase from any other manufacturer.

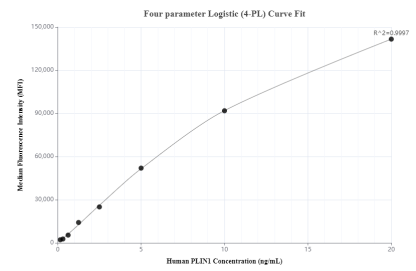
## Selected Validation Data



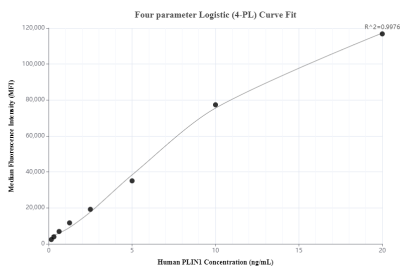
Sandwich ELISA standard curve of MP00840-2, Human Perilipin 1 Recombinant Matched Antibody Pair - PBS only. 83905-3-PBS was coated to a plate as the capture antibody and incubated with serial dilutions of standard Ag26426. 83905-1-PBS was HRP conjugated as the detection antibody. Range: 0.156-10 ng/mL



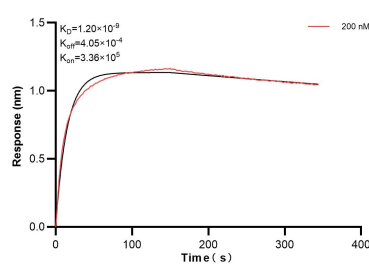
Mouse liver tissue lysate was measured. The human Perilipin 1 concentration in mouse liver tissue lysate was determined to be 23.24 ng/mL (based on a 3.70 mg/mL extract load). 3T3-L1 cell lysate was measured. The human PLIN1 concentration in 3T3-L1 cell lysate was determined to be 3.35 ng/mL (based on a 3.40 mg/mL extract load).



Cytometric bead array standard curve of MP00840-1, Perilipin 1 Recombinant Matched Antibody Pair, PBS Only. Capture antibody: 83905-1-PBS. Detection antibody: 83905-2-PBS. Standard: Ag26426. Range: 0.156-20 ng/mL



Cytometric bead array standard curve of MP00840-2, Perilipin 1 Recombinant Matched Antibody Pair, PBS Only. Capture antibody: 83905-3-PBS. Detection antibody: 83905-1-PBS. Standard: Ag26426. Range: 0.156-20 ng/mL



Biolayer interferometry (BLI) kinetic assay of 83905-1-PBS against Human Perilipin 1 was performed. The affinity constant is 1.20 nM.