

For Research Use Only

CXCL8,IL8 Recombinant antibody, PBS Only (Capture)

Catalog Number:83903-5-PBS



Basic Information

Catalog Number: 83903-5-PBS	GenBank Accession Number: BC013615	Purification Method: Protein A purification
Size: 100ug , Concentration: 1 mg/ml by Nanodrop;	GeneID (NCBI): 3576	CloneNo.: 240889B4
Source: Rabbit	ENSEMBL Gene ID: ENSG00000169429	
Isotype: IgG	UNIPROT ID: P10145	
	Full Name: interleukin 8	
	Calculated MW: 99 aa, 11 kDa	

Applications

Tested Applications:
Sandwich ELISA, Indirect ELISA, Sample test

Species Specificity:
human

Product Information

83903-5-PBS targets CXCL8,IL8 as part of a matched antibody pair:

MP00830-3: 83903-5-PBS capture and 83903-1-PBS detection (validated in Sandwich ELISA)

Unconjugated rabbit recombinant monoclonal antibody in PBS only (BSA and azide free) storage buffer at a concentration of 1 mg/mL, ready for conjugation. Created using Proteintech's proprietary in-house recombinant technology. Recombinant production enables unrivalled batch-to-batch consistency, easy scale-up, and future security of supply.

This conjugation ready format makes antibodies ideal for use in many applications including: ELISAs, multiplex assays requiring matched pairs, mass cytometry, and multiplex imaging applications. Antibody use should be optimized by the end user for each application and assay.

Storage

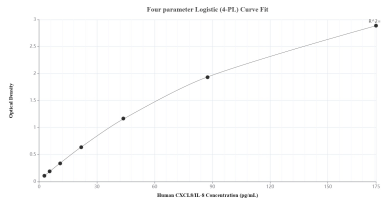
Storage:
Store at -80°C.

Storage Buffer:
PBS Only

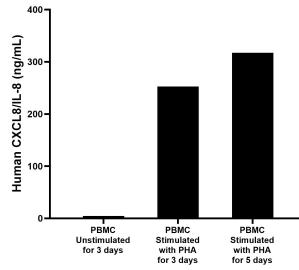
For technical support and original validation data for this product please contact:
T: 1 (888) 4PTGLAB (1-888-478-4522) (toll free in USA), or 1(312) 455-8498 (outside USA) E: proteintech@ptglab.com W: ptglab.com

This product is exclusively available under Proteintech Group brand and is not available to purchase from any other manufacturer.

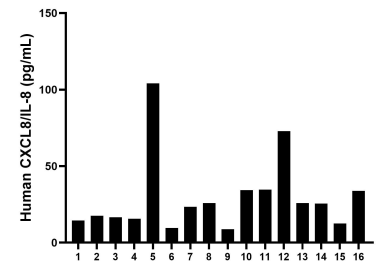
Selected Validation Data



Sandwich ELISA standard curve of MP00830-3, Human CXCL8/IL-8 Recombinant Matched Antibody Pair - PBS only. 83903-5-PBS was coated to a plate as the capture antibody and incubated with serial dilutions of standard Eg0152. 83903-1-PBS was HRP conjugated as the detection antibody. Range: 2.73-175 pg/mL



Human peripheral blood mononuclear cells (PBMC) were cultured unstimulated or stimulated with 10 µg/mL PHA for 3 or 5 days. For the PBMC supernatant cultured for 3 days, the mean CXCL8/IL-8 concentration was determined to be 4.46 ng/mL in unstimulated PBMC supernatant, 252.88 ng/mL in PHA stimulated PBMC supernatant. For the PBMC supernatant cultured for 5 days, the mean CXCL8/IL-8 concentration was determined to be 317.16 ng/mL in PHA stimulated PBMC



Serum of sixteen individual healthy human donors was measured. The CXCL8/IL-8 concentration of detected samples was determined to be 29.8 pg/mL with a range of 8.9 - 104.1 pg/mL