

For Research Use Only

# CXCL8/IL-8 Recombinant antibody, PBS Only (Detector)

Catalog Number: 83903-1-PBS



## Basic Information

<b>Catalog Number:</b> 83903-1-PBS	<b>GenBank Accession Number:</b> BC013615	<b>Purification Method:</b> Protein A purification
<b>Size:</b> 100ug, Concentration: 1 mg/ml by Nanodrop;	<b>GeneID (NCBI):</b> 3576	<b>CloneNo.:</b> 240889C2
<b>Source:</b> Rabbit	<b>ENSEMBL Gene ID:</b> ENSG00000169429	
<b>Isotype:</b> IgG	<b>UNIPROT ID:</b> P10145	
	<b>Full Name:</b> interleukin 8	
	<b>Calculated MW:</b> 99 aa, 11 kDa	

## Applications

**Tested Applications:**  
Cytometric bead array, Sandwich ELISA, Indirect ELISA, Sample test

**Species Specificity:**  
human

## Product Information

83903-1-PBS targets CXCL8/IL-8 as part of a matched antibody pair:

MP00830-1: 83903-3-PBS capture and 83903-1-PBS detection (validated in Cytometric bead array)

MP00830-2: 83903-2-PBS capture and 83903-1-PBS detection (validated in Cytometric bead array)

MP00830-3: 83903-5-PBS capture and 83903-1-PBS detection (validated in Sandwich ELISA)

Unconjugated rabbit recombinant monoclonal antibody in PBS only (BSA and azide free) storage buffer at a concentration of 1 mg/mL, ready for conjugation. Created using Proteintech's proprietary in-house recombinant technology. Recombinant production enables unrivalled batch-to-batch consistency, easy scale-up, and future security of supply.

This conjugation ready format makes antibodies ideal for use in many applications including: ELISAs, multiplex assays requiring matched pairs, mass cytometry, and multiplex imaging applications. Antibody use should be optimized by the end user for each application and assay.

## Storage

**Storage:**  
Store at -80°C.

**Storage Buffer:**  
PBS Only

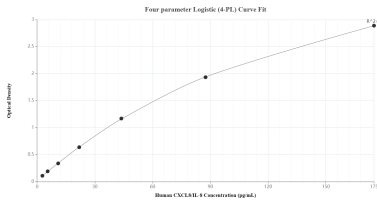
For technical support and original validation data for this product please contact:

T: 1 (888) 4PTGLAB (1-888-478-4522) (toll free in USA), or 1(312) 455-8498 (outside USA)

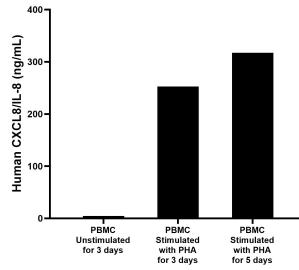
E: [proteintech@ptglab.com](mailto:proteintech@ptglab.com)  
W: [ptglab.com](http://ptglab.com)

**This product is exclusively available under Proteintech Group brand and is not available to purchase from any other manufacturer.**

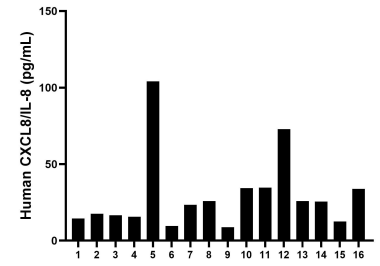
## Selected Validation Data



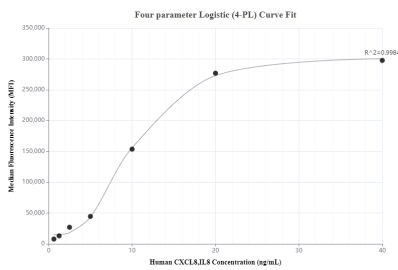
Sandwich ELISA standard curve of MP00830-3, Human CXCL8/IL-8 Recombinant Matched Antibody Pair - PBS only. 83903-5-PBS was coated to a plate as the capture antibody and incubated with serial dilutions of standard Eg0152. 83903-1-PBS was HRP conjugated as the detection antibody. Range: 2.73-175 pg/mL



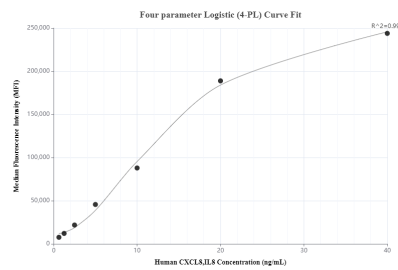
Human peripheral blood mononuclear cells (PBMC) were cultured unstimulated or stimulated with 10 µg/mL PHA for 3 or 5 days. For the PBMC supernatant cultured for 3 days, the mean CXCL8/IL-8 concentration was determined to be 4.46 ng/mL in unstimulated PBMC supernatant, 252.88 ng/mL in PHA stimulated PBMC supernatant. For the PBMC supernatant cultured for 5 days, the mean CXCL8/IL-8 concentration was determined to be 317.16 ng/mL in PHA stimulated PBMC



Serum of sixteen individual healthy human donors was measured. The CXCL8/IL-8 concentration of detected samples was determined to be 29.8 pg/mL with a range of 8.9 - 104.1 pg/mL



Cytometric bead array standard curve of MP00830-1, CXCL8/IL-8 Recombinant Matched Antibody Pair, PBS Only. Capture antibody: 83903-3-PBS. Detection antibody: 83903-1-PBS. Standard: Eg0152. Range: 0.625-40 ng/mL



Cytometric bead array standard curve of MP00830-2, CXCL8/IL-8 Recombinant Matched Antibody Pair, PBS Only. Capture antibody: 83903-2-PBS. Detection antibody: 83903-1-PBS. Standard: Eg0152. Range: 0.625-40 ng/mL