

For Research Use Only

CD25/IL-2RA Recombinant antibody, PBS Only (Capture)

Catalog Number:83896-5-PBS



Basic Information

Catalog Number: 83896-5-PBS	GenBank Accession Number: BC156627	Purification Method: Protein A purification
Size: 100ug, Concentration: 1 mg/ml by Nanodrop;	GeneID (NCBI): 3559	CloneNo.: 240906E5
Source: Rabbit	UNIPROT ID: P01589	
Isotype: IgG	Full Name: interleukin 2 receptor, alpha	
	Calculated MW: 272 aa, 31 kDa	

Applications

Tested Applications:
Sandwich ELISA, Indirect ELISA, Sample test

Species Specificity:
human

Product Information

83896-5-PBS targets CD25/IL-2RA as part of a matched antibody pair:

MP00837-3: 83896-5-PBS capture and 83896-6-PBS detection (validated in Sandwich ELISA)

Unconjugated rabbit recombinant monoclonal antibody in PBS only (BSA and azide free) storage buffer at a concentration of 1 mg/mL, ready for conjugation. Created using Proteintech's proprietary in-house recombinant technology. Recombinant production enables unrivalled batch-to-batch consistency, easy scale-up, and future security of supply.

This conjugation ready format makes antibodies ideal for use in many applications including: ELISAs, multiplex assays requiring matched pairs, mass cytometry, and multiplex imaging applications. Antibody use should be optimized by the end user for each application and assay.

Storage

Storage:
Store at -80°C.
Storage Buffer:
PBS Only

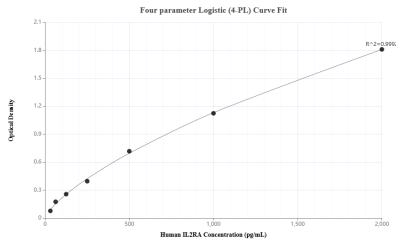
For technical support and original validation data for this product please contact:

T: 1 (888) 4PTGLAB (1-888-478-4522) (toll free
in USA), or 1(312) 455-8498 (outside USA)

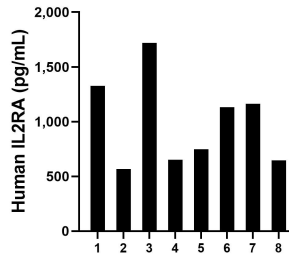
E: proteintech@ptglab.com
W: ptglab.com

This product is exclusively available under Proteintech Group brand and is not available to purchase from any other manufacturer.

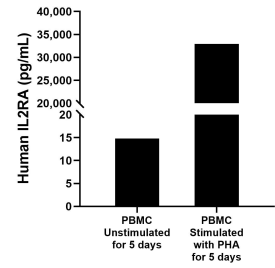
Selected Validation Data



Sandwich ELISA standard curve of MP00837-3, Human CD25/IL-2RA Recombinant Matched Antibody Pair - PBS only. 83896-5-PBS was coated to a plate as the capture antibody and incubated with serial dilutions of standard Eg0408. 83896-6-PBS was HRP conjugated as the detection antibody. Range: 31.25-2000 pg/mL



Serum of eight individual healthy human donors was measured. The human CD25/IL-2RA concentration of detected samples was determined to be 993.9 pg/mL with a range of 567.3 - 1,718.0 pg/mL



Human peripheral blood mononuclear cells (5×10^6 cells/mL) were cultured in DMEM supplemented with 5% fetal bovine serum, 50 μ M β -mercaptoethanol, 2 mM L-glutamine, 100 U/mL penicillin, and 100 μ g/mL streptomycin sulfate. The cells were cultured unstimulated or stimulated with 10 μ g/mL PHA for 5 days. Aliquots of the cell culture supernates were removed and assayed for levels of human CD25/IL-2RA.