

For Research Use Only

CD25/IL2RA Recombinant antibody

Catalog Number:83896-1-RR



Basic Information

Catalog Number: 83896-1-RR	GenBank Accession Number: BC156627	Purification Method: Protein A purification
Size: 100ul , Concentration: 1000 µg/ml by Nanodrop;	GeneID (NCBI): 3559	CloneNo.: 240906A12
Source: Rabbit	UNIPROT ID: P01589	Recommended Dilutions: WB 1:5000-1:50000
Isotype: IgG	Full Name: interleukin 2 receptor, alpha	
	Calculated MW: 272 aa, 31 kDa	
	Observed MW: 60 kDa	

Applications

Tested Applications: WB, ELISA	Positive Controls: WB : MJ cells,
Species Specificity: human	

Background Information

Proliferation of T lymphocytes is triggered by the interaction of IL-2 with its specific receptor following T lymphocyte activation. The receptor for IL-2 has three forms, generated by different combinations of three different proteins, the alpha chain (IL-2R alpha), the beta chain (IL-2R beta), and the gamma chain (IL-2R gamma) (PMID: 8476561). IL-2R alpha (also known as CD25) is a type I transmembrane protein present in activated T cells, activated B cells, some thymocytes, myeloid precursors, and oligodendrocytes. CD25 is also found on natural CD4+ Foxp3+ Treg cells (PMID: 22585674).

Storage

Storage:
Store at -20°C. Stable for one year after shipment.
Storage Buffer:
PBS with 0.02% sodium azide and 50% glycerol pH 7.3.
Aliquoting is unnecessary for -20°C storage

*** 20ul sizes contain 0.1% BSA

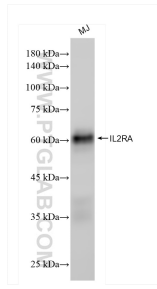
For technical support and original validation data for this product please contact:

T: 1 (888) 4PTGLAB (1-888-478-4522) (toll free in USA), or 1(312) 455-8498 (outside USA)

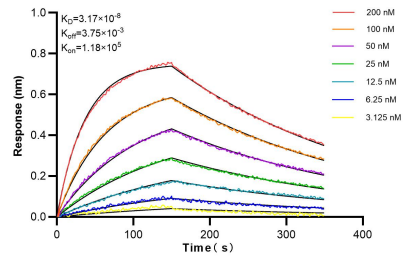
E: proteintech@ptglab.com
W: ptglab.com

This product is exclusively available under Proteintech Group brand and is not available to purchase from any other manufacturer.

Selected Validation Data



MJ cells were subjected to SDS PAGE followed by western blot with 83896-1-RR (IL2RA antibody) at dilution of 1:10000 incubated at room temperature for 1.5 hours.



Biolayer interferometry (BLI) kinetic assays of 83896-1-RR against Human CD25/IL2RA were performed. The affinity constant is 31.7 nM.