

For Research Use Only

4EBP1 Recombinant antibody, PBS Only (Detector)

Catalog Number: 83890-2-PBS



Basic Information

Catalog Number: 83890-2-PBS	GenBank Accession Number: BC004459	Purification Method: Protein A purification
Size: 100ug, Concentration: 1 mg/ml by Nanodrop;	GeneID (NCBI): 1978	CloneNo.: 241055F11
Source: Rabbit	UNIPROT ID: Q13541	
Isotype: IgG	Full Name: eukaryotic translation initiation factor 4E binding protein 1	
Immunogen Catalog Number: AG5056	Calculated MW: 118 aa, 12 kDa	

Applications

Tested Applications:
Cytometric bead array, Sandwich ELISA, Indirect ELISA,
Sample test

Species Specificity:
human

Product Information

83890-2-PBS targets 4EBP1 as part of a matched antibody pair:

MP00559-3: 83890-1-PBS capture and 83890-2-PBS detection (validated in Cytometric bead array, Sandwich ELISA)

MP00559-5: 83890-3-PBS capture and 83890-2-PBS detection (validated in Cytometric bead array)

Unconjugated rabbit recombinant monoclonal antibody in PBS only (BSA and azide free) storage buffer at a concentration of 1 mg/mL, ready for conjugation. Created using Proteintech's proprietary in-house recombinant technology. Recombinant production enables unrivalled batch-to-batch consistency, easy scale-up, and future security of supply.

This conjugation ready format makes antibodies ideal for use in many applications including: ELISAs, multiplex assays requiring matched pairs, mass cytometry, and multiplex imaging applications. Antibody use should be optimized by the end user for each application and assay.

Storage

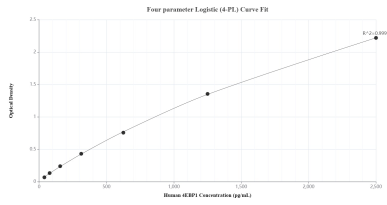
Storage:
Store at -80°C.

Storage Buffer:
PBS Only

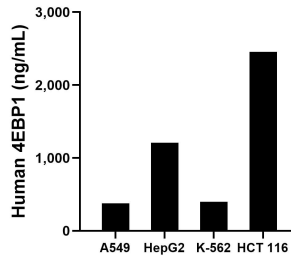
For technical support and original validation data for this product please contact:
T: 1 (888) 4PTGLAB (1-888-478-4522) (toll free in USA), or 1(312) 455-8498 (outside USA) E: proteintech@ptglab.com
W: ptglab.com

This product is exclusively available under Proteintech Group brand and is not available to purchase from any other manufacturer.

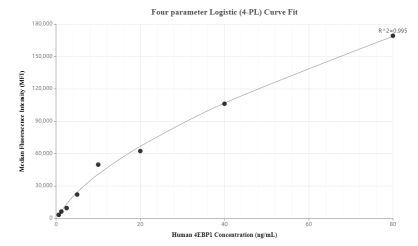
Selected Validation Data



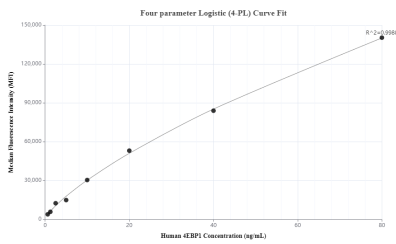
Sandwich ELISA standard curve of MP00559-3, Human 4EBP1 Recombinant Matched Antibody Pair - PBS only. 83890-1-PBS was coated to a plate as the capture antibody and incubated with serial dilutions of standard Ag5056. 83890-2-PBS was HRP conjugated as the detection antibody. Range: 39.06-2500 pg/mL



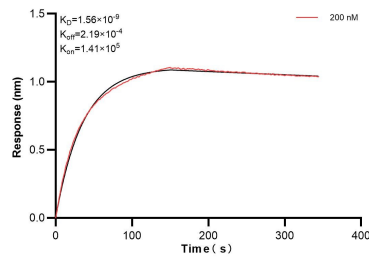
The mean 4EBP1 concentration was determined to be 375.9 ng/mL in A549 cell extract based on a 3.0 mg/mL extract load, 1,210.9 ng/mL in HepG2 cell extract based on a 8.5 mg/mL extract load, 396.7 ng/mL in K-562 cell extract based on a 5.2 mg/mL extract load and 2,456.3 ng/mL in HCT 116 cell extract based on a 6.1 mg/mL extract load.



Cytometric bead array standard curve of MP00559-3, 4EBP1 Recombinant Matched Antibody Pair, PBS Only. Capture antibody: 83890-1-PBS. Detection antibody: 83890-2-PBS. Standard: Ag5056. Range: 0.625-80 ng/mL



Cytometric bead array standard curve of MP00559-5, 4EBP1 Recombinant Matched Antibody Pair, PBS Only. Capture antibody: 83890-3-PBS. Detection antibody: 83890-2-PBS. Standard: Ag5056. Range: 0.625-80 ng/mL



Bi-layer interferometry (BLI) kinetic assay of 83890-2-PBS against Human 4EBP1 was performed. The affinity constant is 1.56 nM.