

For Research Use Only

CSDC2 Recombinant antibody

Catalog Number: 83886-6-RR



Basic Information

Catalog Number: 83886-6-RR	GenBank Accession Number: BC067113	Purification Method: Protein A purification
Size: 100ul , Concentration: 1000 µg/ml by Nanodrop;	GeneID (NCBI): 27254	CloneNo.: 241031A11
Source: Rabbit	UNIPROT ID: Q9Y534	Recommended Dilutions: IF/ICC 1:125-1:500
Isotype: IgG	Full Name: cold shock domain containing C2, RNA binding	
Immunogen Catalog Number: AG16216	Calculated MW: 153 aa, 17 kDa	

Applications

Tested Applications: IF/ICC, FC (Intra), ELISA	Positive Controls: IF/ICC : HeLa cells,
Species Specificity: human	

Background Information

PIPPIN, also known as CSDC2 (Cold shock domain-containing protein C2) is an RNA-binding protein (RBP), highly enriched in the rat brain, specifically enriched in some pyramidal neurons of the cerebral cortex and in the Purkinje cells of the cerebellum (PMID: 10446180). PIPPIN has the potential to undergo different posttranslational modifications and might be a good candidate to regulate the synthesis of specific proteins in response to extracellular stimuli. Nuclear CSDC2 is connected to proliferation and cytoplasmic CSDC2 to terminal differentiation in the decidua and that CSDC2 could regulate differentiation during decidua development (PMID: 30078185, PMID: 17053029).

Storage

Storage:
Store at -20°C. Stable for one year after shipment.
Storage Buffer:
PBS with 0.02% sodium azide and 50% glycerol pH 7.3.
Aliquoting is unnecessary for -20°C storage

*** 20ul sizes contain 0.1% BSA

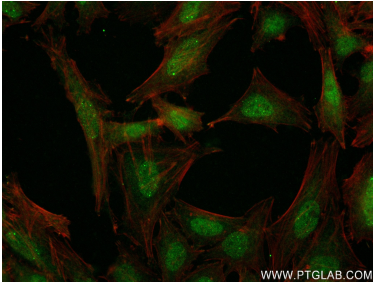
For technical support and original validation data for this product please contact:

T: 1 (888) 4PTGLAB (1-888-478-4522) (toll free in USA), or 1(312) 455-8498 (outside USA)

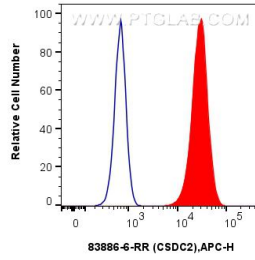
E: proteintech@ptglab.com
W: ptglab.com

This product is exclusively available under Proteintech Group brand and is not available to purchase from any other manufacturer.

Selected Validation Data



Immunofluorescent analysis of (4% PFA) fixed HeLa cells using CSDC2 antibody (83886-6-RR, Clone: 241031A11) at dilution of 1:250 and CoraLite@488-Conjugated Goat Anti-Rabbit IgG(H+L) (SA00013-2), CL594-Phalloidin (red).



1x10⁶ U-2 OS were intracellularly stained with 0.25 ug CSDC2 Recombinant antibody (83886-6-RR, Clone:241031A11) and APC-Conjugated Goat Anti-Rabbit IgG(H+L)(red), or 0.25 ug Isotype Control (blue). Cells were fixed and permeabilized with True-Nuclear Transcription Factor Buffer Set.