

For Research Use Only

UBAP2 Recombinant antibody, PBS Only (Capture)

Catalog Number: 83885-2-PBS

Featured Product



Basic Information

Catalog Number: 83885-2-PBS	GenBank Accession Number: NM_018449	Purification Method: Protein A purification
Size: 100ug, Concentration: 1 mg/ml by Nanodrop;	GeneID (NCBI): 55833	CloneNo.: 240890F6
Source: Rabbit	UNIPROT ID: Q5T6F2	
Isotype: IgG	Full Name: ubiquitin associated protein 2	
Immunogen Catalog Number: AG30572	Calculated MW: 117 kDa	
	Observed MW: 140 kDa	

Applications

Tested Applications:
WB, IF/ICC, FC (Intra), Cytometric bead array, Indirect
ELISA

Species Specificity:
human

Product Information

83885-2-PBS targets UBAP2 as part of a matched antibody pair:

MP00850-2: 83885-2-PBS capture and 83885-1-PBS detection (validated in Cytometric bead array)

MP00850-3: 83885-2-PBS capture and 83885-4-PBS detection (validated in Cytometric bead array)

Unconjugated rabbit recombinant monoclonal antibody in PBS only (BSA and azide free) storage buffer at a concentration of 1 mg/mL, ready for conjugation. Created using Proteintech's proprietary in-house recombinant technology. Recombinant production enables unrivalled batch-to-batch consistency, easy scale-up, and future security of supply.

This conjugation ready format makes antibodies ideal for use in many applications including: ELISAs, multiplex assays requiring matched pairs, mass cytometry, and multiplex imaging applications. Antibody use should be optimized by the end user for each application and assay.

Storage

Storage:
Store at -80°C.
Storage Buffer:
PBS Only

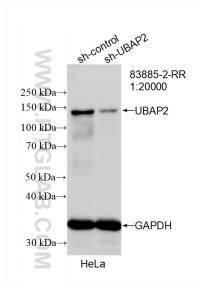
For technical support and original validation data for this product please contact:

T: 1 (888) 4PTGLAB (1-888-478-4522) (toll free
in USA), or 1(312) 455-8498 (outside USA)

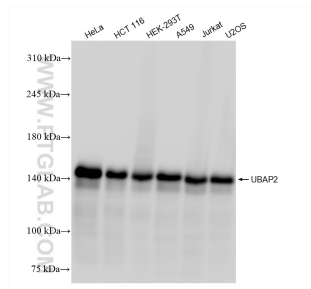
E: proteintech@ptglab.com
W: ptglab.com

This product is exclusively available under Proteintech Group brand and is not available to purchase from any other manufacturer.

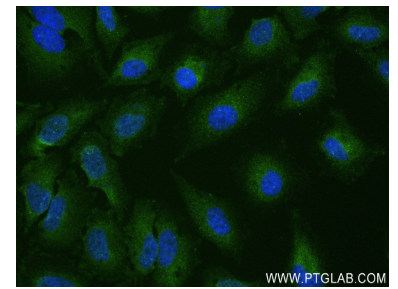
Selected Validation Data



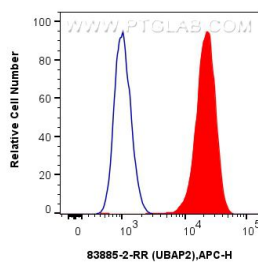
WB result of UBAP2 antibody (83885-2-RR; 1:20000; incubated at room temperature for 1.5 hours) with sh-Control and sh-UBAP2 transfected HeLa cells. This data was developed using the same antibody clone with 83885-2-PBS in a different storage buffer formulation.



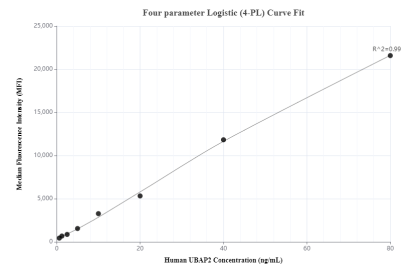
Various lysates were subjected to SDS PAGE followed by western blot with 83885-2-RR (UBAP2 antibody) at dilution of 1:20000 incubated at room temperature for 1.5 hours. This data was developed using the same antibody clone with 83885-2-PBS in a different storage buffer formulation.



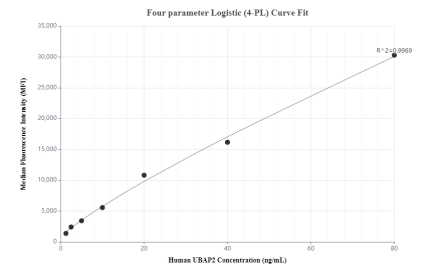
Immunofluorescent analysis of (4% PFA) fixed HeLa cells using UBAP2 antibody (83885-2-RR, Clone: 240890F6) at dilution of 1:250 and CoraLite@488-Conjugated AffiniPure Goat Anti-Rabbit IgG(H+L) (SA00013-2). This data was developed using the same antibody clone with 83885-2-PBS in a different storage buffer formulation.



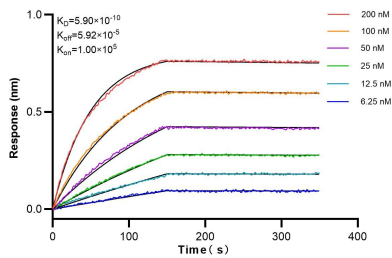
1×10^6 U-2 OS were intracellularly stained with 0.25 ug UBAP2 Recombinant antibody (83885-2-RR, Clone:240890F6) and APC-Conjugated AffiniPure Goat Anti-Rabbit IgG(H+L)(red), or 0.25 ug Isotype Control (blue). Cells were fixed with 4% PFA and permeabilized with Flow Cytometry Perm Buffer (PF00011-C). This data was developed using the same antibody clone with 83885-2-PBS in a different storage buffer formulation.



Cytometric bead array standard curve of MP00850-2, UBAP2 Recombinant Matched Antibody Pair, PBS Only. Capture antibody: 83885-2-PBS. Detection antibody: 83885-1-PBS. Standard: Ag30572. Range: 0.625-80 ng/mL.



Cytometric bead array standard curve of MP00850-3, UBAP2 Recombinant Matched Antibody Pair, PBS Only. Capture antibody: 83885-2-PBS. Detection antibody: 83885-4-PBS. Standard: Ag30572. Range: 1.25-80 ng/mL.



Biolayer interferometry (BLI) kinetic assays of 83885-2-RR against Human UBAP2 were performed. The affinity constant is 0.59 nM.