

For Research Use Only

S1PR2 Recombinant antibody, PBS Only (Detector)

Catalog Number: 83881-1-PBS



Basic Information

Catalog Number: 83881-1-PBS	GenBank Accession Number: BC069598	Purification Method: Protein A purification
Size: 100ug, Concentration: 1 mg/ml by Nanodrop;	GeneID (NCBI): 9294	CloneNo.: 241067B10
Source: Rabbit	UNIPROT ID: O95136	
Isotype: IgG	Full Name: sphingosine-1-phosphate receptor 2	
Immunogen Catalog Number: AG15470	Calculated MW: 353 aa, 39 kDa	

Applications

Tested Applications:
Cytometric bead array, Sandwich ELISA, Indirect ELISA,
Sample test

Species Specificity:
human

Product Information

83881-1-PBS targets S1PR2 as part of a matched antibody pair:

MP00831-1: 83881-2-PBS capture and 83881-1-PBS detection (validated in Cytometric bead array, Sandwich ELISA)

Unconjugated rabbit recombinant monoclonal antibody in PBS only (BSA and azide free) storage buffer at a concentration of 1 mg/mL, ready for conjugation. Created using Proteintech's proprietary in-house recombinant technology. Recombinant production enables unrivalled batch-to-batch consistency, easy scale-up, and future security of supply.

This conjugation ready format makes antibodies ideal for use in many applications including: ELISAs, multiplex assays requiring matched pairs, mass cytometry, and multiplex imaging applications. Antibody use should be optimized by the end user for each application and assay.

Storage

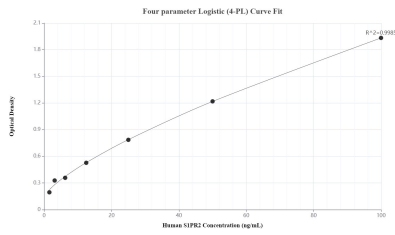
Storage:
Store at -80°C.

Storage Buffer:
PBS Only

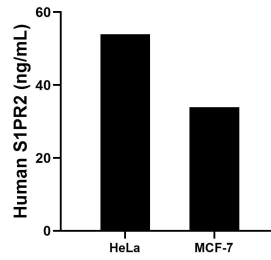
For technical support and original validation data for this product please contact:
T: 1 (888) 4PTGLAB (1-888-478-4522) (toll free in USA), or 1(312) 455-8498 (outside USA) E: proteintech@ptglab.com
W: ptglab.com

This product is exclusively available under Proteintech Group brand and is not available to purchase from any other manufacturer.

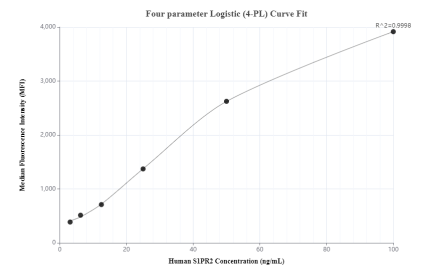
Selected Validation Data



Sandwich ELISA standard curve of MP00831-1, Human S1PR2 Recombinant Matched Antibody Pair - PBS only. 83881-2-PBS was coated to a plate as the capture antibody and incubated with serial dilutions of standard Ag15470. 83881-1-PBS was HRP conjugated as the detection antibody. Range: 1.56-100 ng/mL.



The mean S1PR2 concentration was determined to be 53.98 ng/mL in HeLa cell extract based on a 1.20 mg/mL extract load and 33.91 ng/mL in MCF-7 cell extract based on a 1.20 mg/mL extract load.



Cytometric bead array standard curve of MP00831-1, S1PR2 Recombinant Matched Antibody Pair, PBS Only. Capture antibody: 83881-2-PBS. Detection antibody: 83881-1-PBS. Standard: Ag15470. Range: 3.125-100 ng/mL.