

For Research Use Only

AES Recombinant antibody, PBS Only (Detector)

Catalog Number: 83878-4-PBS



Basic Information

Catalog Number: 83878-4-PBS	GenBank Accession Number: BC113735	Purification Method: Protein A purification
Size: 100ug, Concentration: 1 mg/ml by Nanodrop;	GeneID (NCBI): 166	CloneNo.: 240987H7
Source: Rabbit	UNIPROT ID: Q08117	
Isotype: IgG	Full Name: amino-terminal enhancer of split	
Immunogen Catalog Number: AG21021	Calculated MW: 264 aa, 29 kDa	

Applications

Tested Applications:
Cytometric bead array, Sandwich ELISA, Indirect ELISA, Sample test

Species Specificity:
human

Product Information

83878-4-PBS targets AES as part of a matched antibody pair:

MP00860-1: 83878-1-PBS capture and 83878-4-PBS detection (validated in Cytometric bead array, Sandwich ELISA)

Unconjugated rabbit recombinant monoclonal antibody in PBS only (BSA and azide free) storage buffer at a concentration of 1 mg/mL, ready for conjugation. Created using Proteintech's proprietary in-house recombinant technology. Recombinant production enables unrivalled batch-to-batch consistency, easy scale-up, and future security of supply.

This conjugation ready format makes antibodies ideal for use in many applications including: ELISAs, multiplex assays requiring matched pairs, mass cytometry, and multiplex imaging applications. Antibody use should be optimized by the end user for each application and assay.

Storage

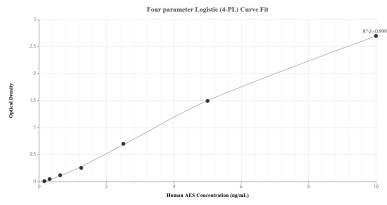
Storage:
Store at -80°C.

Storage Buffer:
PBS Only

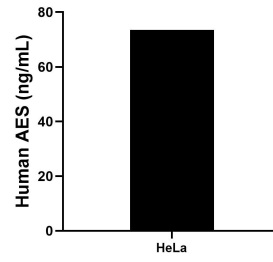
For technical support and original validation data for this product please contact:
T: 1 (888) 4PTGLAB (1-888-478-4522) (toll free in USA), or 1(312) 455-8498 (outside USA) E: proteintech@ptglab.com W: ptglab.com

This product is exclusively available under Proteintech Group brand and is not available to purchase from any other manufacturer.

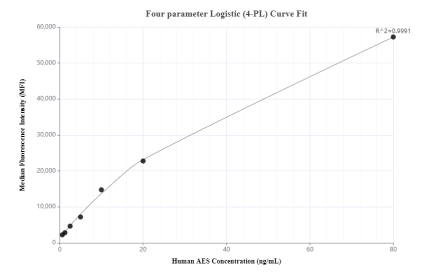
Selected Validation Data



Sandwich ELISA standard curve of MP00860-1, Human AES Recombinant Matched Antibody Pair - PBS only. 83878-1-PBS was coated to a plate as the capture antibody and incubated with serial dilutions of standard Ag21021. 83878-4-PBS was HRP conjugated as the detection antibody. Range: 0.156-10 ng/mL.



The mean AES concentration was determined to be 73.51 ng/mL in HeLa cell extract based on a 1.30 mg/mL extract load.



Cytometric bead array standard curve of MP00860-1, AES Recombinant Matched Antibody Pair, PBS Only. Capture antibody: 83878-1-PBS. Detection antibody: 83878-4-PBS. Standard: Ag21021. Range: 0.625-80 ng/mL.