

For Research Use Only

EXOSC1 Recombinant antibody, PBS Only

Catalog Number: 83875-5-PBS

Featured Product



Basic Information

| | | |
|--|--|---|
| Catalog Number: 83875-5-PBS | GenBank Accession Number: BC022067 | Purification Method: Protein A purification |
| Size: 100ug, Concentration: 1 mg/ml by Nanodrop; | GeneID (NCBI): 51013 | CloneNo.: 240938C6 |
| Source: Rabbit | UNIPROT ID: Q9Y3B2 | |
| Isotype: IgG | Full Name: exosome component 1 | |
| Immunogen Catalog Number: AG3286 | Calculated MW: 195 aa, 21 kDa | |
| | Observed MW: 21 kDa | |

Applications

Tested Applications:
WB, Indirect ELISA

Species Specificity:
human, rat

Background Information

EXOSC1 is a core component of the exosome. The mammalian exosome is required for rapid degradation of AU rich element-containing RNAs but not for poly(A) shortening.

Storage

Storage:
Store at -80°C.

Storage Buffer:
PBS Only

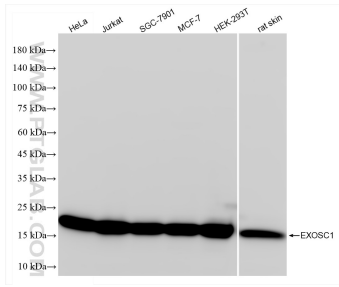
For technical support and original validation data for this product please contact:

T: 1 (888) 4PTGLAB (1-888-478-4522) (toll free in USA), or 1(312) 455-8498 (outside USA)

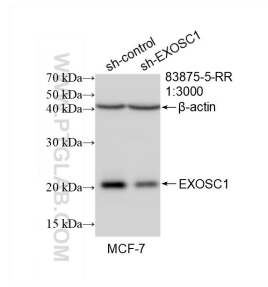
E: proteintech@ptglab.com
W: ptglab.com

This product is exclusively available under Proteintech Group brand and is not available to purchase from any other manufacturer.

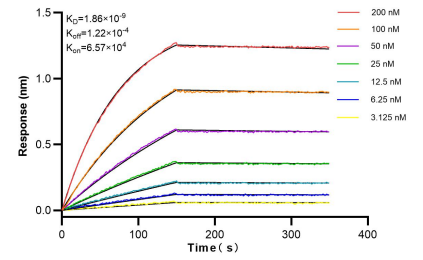
Selected Validation Data



Various lysates were subjected to SDS PAGE followed by western blot with 83875-5-RR (EXOSC1 antibody) at dilution of 1:10000 incubated at room temperature for 1.5 hours. This data was developed using the same antibody clone with 83875-5-PBS in a different storage buffer formulation.



WB result of EXOSC1 antibody (83875-5-RR; 1:3000; incubated at room temperature for 1.5 hours) with sh-Control and sh-EXOSC1 transfected MCF-7 cells. This data was developed using the same antibody clone with 83875-5-PBS in a different storage buffer formulation.



Biolayer interferometry (BLI) kinetic assays of 83875-5-RR against Human EXOSC1 were performed. The affinity constant is 1.86 nM.