

For Research Use Only

Cullin 5 Recombinant antibody, PBS Only

Catalog Number: 83869-1-PBS



Basic Information

Catalog Number: 83869-1-PBS	GenBank Accession Number: BC063306	Purification Method: Protein A purification
Size: 100ug, Concentration: 1 mg/ml by Nanodrop;	GeneID (NCBI): 8065	CloneNo.: 240737A12
Source: Rabbit	UNIPROT ID: Q93034	
Isotype: IgG	Full Name: cullin 5	
Immunogen Catalog Number: AG34620	Calculated MW: 91 kDa	
	Observed MW: 80 kDa	

Applications

Tested Applications:
WB, FC (Intra), ELISA

Species Specificity:
human, mouse

Background Information

The cullin family proteins are scaffold proteins for the RING finger type E3 ligases, participating in the proteolysis through the ubiquitin-proteasome pathway. In humans, there are eight members of cullins, including CUL1, 2, 3, 4A, 4B, 5, 7, and CUL9 with an evolutionarily conserved cullin homology domain at the C-terminus, responsible for their interaction with the RING protein, assembling 8 cullin-based RING dependent E3 ubiquitin ligases to target thousands of substrates for ubiquitination and degradation (PMID: 32334051). Cullin 5 is the key scaffolding protein of Cullin RING ligase-5 (CRL-5). Cullin 5 plays positive roles in regulating cell growth, proliferation and physiological and other processes in the human body (PMID: 32194910). Cullin 5 has been detected in the form of double bands in the results of Western blot, which might be caused by neddylation (PMID: 36449095; 31294695).

Storage

Storage:
Store at -80°C.

Storage Buffer:
PBS Only

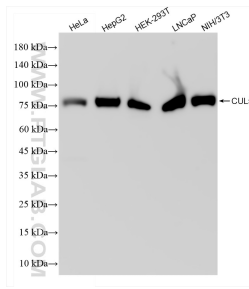
For technical support and original validation data for this product please contact:

T: 1 (888) 4PTGLAB (1-888-478-4522) (toll free in USA), or 1(312) 455-8498 (outside USA)

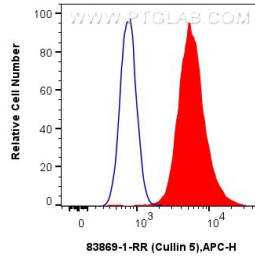
E: proteintech@ptglab.com
W: ptglab.com

This product is exclusively available under Proteintech Group brand and is not available to purchase from any other manufacturer.

Selected Validation Data



Various lysates were subjected to SDS PAGE followed by western blot with 83869-1-RR (CUL5 antibody) at dilution of 1:2000 incubated at room temperature for 1.5 hours. This data was developed using the same antibody clone with 83869-1-PBS in a different storage buffer formulation.



1×10^6 MCF-7 cells were intracellularly stained with 0.25 μ g Cullin 5 Recombinant antibody (83869-1-RR, Clone:240737A12) and APC-Conjugated AffiniPure Goat Anti-Rabbit IgG(H+L) (red), or 0.25 μ g Isotype Control (blue). Cells were fixed with 4% PFA and permeabilized with Flow Cytometry Perm Buffer (PF00011-C). This data was developed using the same antibody clone with 83869-1-PBS in a different storage buffer formulation.