

For Research Use Only

Ins1 Recombinant antibody

Catalog Number:83867-1-RR



Basic Information

Catalog Number: 83867-1-RR	GenBank Accession Number: NM_008386	Purification Method: Protein A purification
Size: 100ul , Concentration: 1000 ug/ml by Nanodrop;	GeneID (NCBI): 16333	CloneNo.: 240798G4
Source: Rabbit	UNIPROT ID: P01325	Recommended Dilutions: WB 1:2000-1:10000 IHC 1:5000-1:20000 IF-P 1:50-1:500
Isotype: IgG	Full Name: insulin I	
Immunogen Catalog Number: AG29988	Calculated MW: 12 kDa	
	Observed MW: 12 kDa	

Applications

Tested Applications:

WB, IHC, IF-P, ELISA

Species Specificity:

mouse, rat

Note-IHC: suggested antigen retrieval with TE buffer pH 9.0; (*) Alternatively, antigen retrieval may be performed with citrate buffer pH 6.0

Positive Controls:

WB : rat pancreas tissue,

IHC : mouse pancreas tissue,

IF-P: mouse pancreas tissue,

Background Information

Insulin 1 is a peptide hormone that plays a vital role in the regulation of carbohydrate and lipid metabolism. The encoded precursor protein undergoes proteolytic cleavage to produce a disulfide-linked heterodimeric functional protein that is stored in secretory granules. An increase in blood glucose levels, among others, induces the release of insulin from the secretory granules. Mice deficient in the functional hormone encoded by this gene develop diabetes mellitus.

Storage

Storage:

Store at -20°C. Stable for one year after shipment.

Storage Buffer:

PBS with 0.02% sodium azide and 50% glycerol pH 7.3.

Aliquoting is unnecessary for -20°C storage

***** 20ul sizes contain 0.1%BSA**

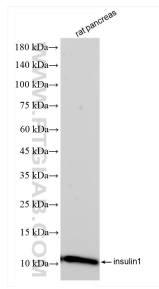
For technical support and original validation data for this product please contact:

T: 1 (888) 4PTGLAB (1-888-478-4522) (toll free
in USA), or 1(312) 455-8498 (outside USA)

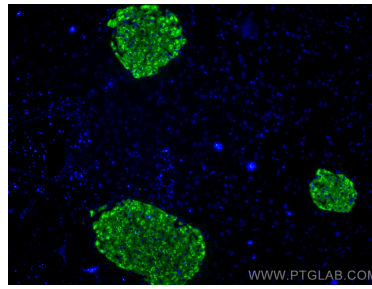
E: proteintech@ptglab.com
W: ptglab.com

This product is exclusively available under Proteintech Group brand and is not available to purchase from any other manufacturer.

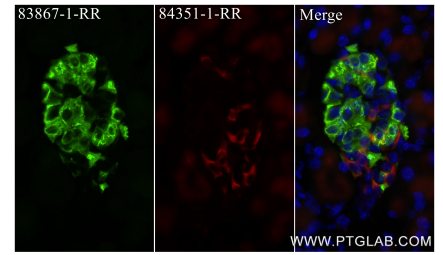
Selected Validation Data



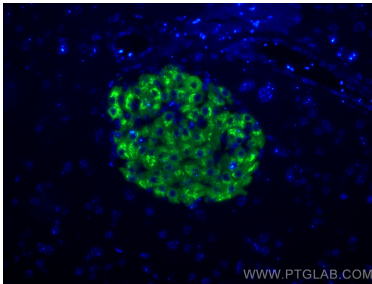
rat pancreas tissue were subjected to SDS PAGE followed by western blot with 83867-1-RR (insulin1 antibody) at dilution of 1:5000 incubated at room temperature for 1.5 hours.



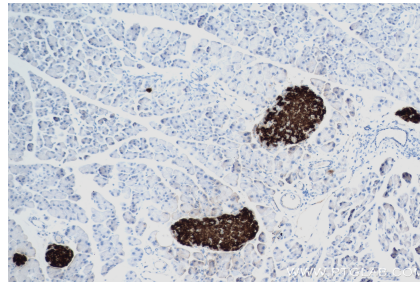
Immunofluorescent analysis of (4% PFA) fixed paraffin-embedded mouse pancreas tissue using Ins1 antibody (83867-1-RR, Clone: 240798G4) at dilution of 1:200 and Multi-rAb Coralite® Plus 488-Goat Anti-Rabbit Recombinant Secondary Antibody (H+L) (RGAR002). Heat mediated antigen retrieval with Tris-EDTA buffer (pH 9.0).



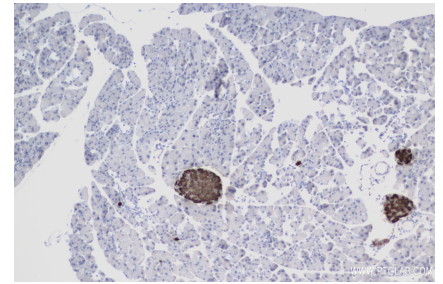
Immunofluorescent analysis of (4% PFA) fixed paraffin-embedded mouse pancreas tissue using insulin1 antibody (83867-1-RR, Clone: 240798G4, green) at dilution of 1:400 and Coralite® 488-Conjugated Goat Anti-Rabbit IgG(H+L) (SA00013-2), SST-Specific antibody (84351-1-RR, Clone: 240816D9, red) at dilution of 1:400 and FlexAble Coralite® Plus 594 Antibody Labeling Kit for Rabbit IgG(KFA009), Heat mediated antigen retrieval with Tris-EDTA buffer (pH 9.0).



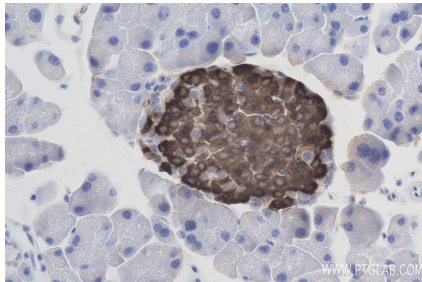
Immunofluorescent analysis of (4% PFA) fixed paraffin-embedded mouse pancreas tissue using Ins1 antibody (83867-1-RR, Clone: 240798G4) at dilution of 1:200 and Multi-rAb Coralite® Plus 488-Goat Anti-Rabbit Recombinant Secondary Antibody (H+L) (RGAR002). Heat mediated antigen retrieval with Tris-EDTA buffer (pH 9.0).



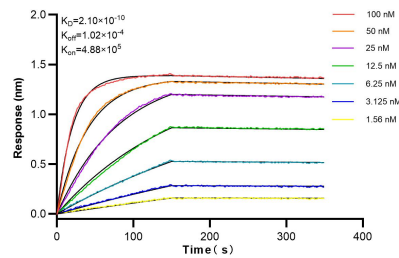
Immunohistochemical analysis of paraffin-embedded mouse pancreas tissue slide using 83867-1-RR (Ins1 antibody) at dilution of 1:2000 (under 10x lens). Heat mediated antigen retrieval with Tris-EDTA buffer (pH 9.0).



Immunohistochemical analysis of paraffin-embedded mouse pancreas tissue slide using 83867-1-RR (Ins1 antibody) at dilution of 1:10000 (under 10x lens). Heat mediated antigen retrieval with Tris-EDTA buffer (pH 9.0).



Immunohistochemical analysis of paraffin-embedded mouse pancreas tissue slide using 83867-1-RR (Ins1 antibody) at dilution of 1:10000 (under 40x lens). Heat mediated antigen retrieval with Tris-EDTA buffer (pH 9.0).



Biolayer interferometry (BLI) kinetic assays of 83867-1-RR against Mouse Ins1 were performed. The affinity constant is 0.21 nM.