

For Research Use Only

# FIP1L1 Recombinant antibody, PBS Only



Catalog Number: 83863-2-PBS

## Basic Information

<b>Catalog Number:</b> 83863-2-PBS	<b>GenBank Accession Number:</b> BC017724	<b>Purification Method:</b> Protein A purification
<b>Size:</b> 100ug , Concentration: 1 mg/ml by Nanodrop;	<b>GeneID (NCBI):</b> 81608	<b>CloneNo.:</b> 240658C4
<b>Source:</b> Rabbit	<b>UNIPROT ID:</b> Q6UN15	
<b>Isotype:</b> IgG	<b>Full Name:</b> FIP1 like 1 (S. cerevisiae)	
<b>Immunogen Catalog Number:</b> AG2921	<b>Calculated MW:</b> 594 aa, 66 kDa	

## Applications

**Tested Applications:**  
WB, ELISA

**Species Specificity:**  
human, mouse

## Storage

**Storage:**  
Store at -80°C.  
**Storage Buffer:**  
PBS Only

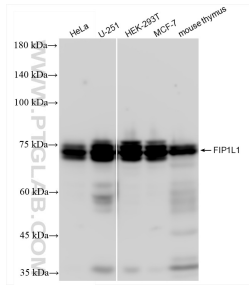
For technical support and original validation data for this product please contact:

T: 1 (888) 4PTGLAB (1-888-478-4522) (toll free in USA), or 1(312) 455-8498 (outside USA)

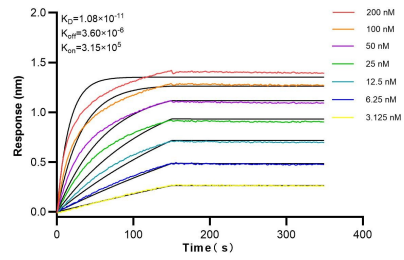
E: [proteintech@ptglab.com](mailto:proteintech@ptglab.com)  
W: [ptglab.com](http://ptglab.com)

This product is exclusively available under Proteintech Group brand and is not available to purchase from any other manufacturer.

## Selected Validation Data



Various lysates were subjected to SDS PAGE followed by western blot with 83863-2-RR (FIP1L1 antibody) at dilution of 1:7500 incubated at room temperature for 1.5 hours. This data was developed using the same antibody clone with 83863-2-PBS in a different storage buffer formulation.



Biolayer interferometry (BLI) kinetic assays of 83863-2-RR against Human FIP1L1 were performed. The affinity constant is 10.8 pM.