

For Research Use Only

HEC1/HEC/NDC80 Recombinant antibody

Catalog Number: 83859-1-RR



Basic Information

Catalog Number: 83859-1-RR	GenBank Accession Number: /	Purification Method: Protein A purification
Size: 100ul , Concentration: 1000 µg/ml by Nanodrop;	GeneID (NCBI): 10403	CloneNo.: 5A2
Source: Rabbit	Full Name: NDC80 homolog, kinetochore complex component (<i>S. cerevisiae</i>)	Recommended Dilutions: WB 1:2000-1:10000 IF/ICC 1:250-1:1000
Isotype: IgG	Observed MW: 74 kDa	

Applications

Tested Applications:
WB, IF/ICC, FC (Intra), ELISA

Species Specificity:
human

Positive Controls:

WB : HeLa cells, U2OS cells, Jurkat cells, NCCIT cells, K-562 cells, HEK-293T cells, A431 cells, MCF-7 cells, HepG2 cells, MOLT-4 cells

IF/ICC : HeLa cells, HepG2 cells

Background Information

NDC80 complex is a heterotetrameric protein complex comprised of Hec1 (also called Ndc80), Nuf2, Spc24, and Spc25. Mis12 complex (bound to CENP-C or CENP-T) or CDK1-phosphorylated CENP-T to anchor the NDC80 complex to the kinetochore. HEC is one of several proteins involved in spindle checkpoint signaling. This surveillance mechanism assures correct segregation of chromosomes during cell division by detecting unaligned chromosomes and causing prometaphase arrest until the proper bipolar attachment of chromosomes is achieved.

Storage

Storage:
Store at -20°C. Stable for one year after shipment.
Storage Buffer:
PBS with 0.02% sodium azide and 50% glycerol pH 7.3.
Aliquoting is unnecessary for -20°C storage

*** 20ul sizes contain 0.1% BSA

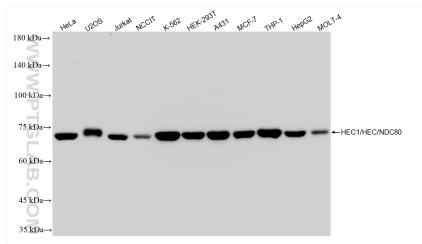
For technical support and original validation data for this product please contact:

T: 1 (888) 4PTGLAB (1-888-478-4522) (toll free in USA), or 1(312) 455-8498 (outside USA)

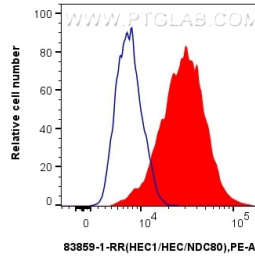
E: proteintech@ptglab.com
W: ptglab.com

This product is exclusively available under Proteintech Group brand and is not available to purchase from any other manufacturer.

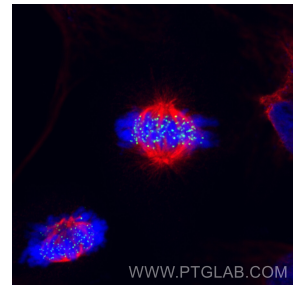
Selected Validation Data



Various lysates were subjected to SDS PAGE followed by western blot with 83859-1-RR (HEC1/HEC/NDC80 antibody) at dilution of 1:5000 incubated at room temperature for 1.5 hours.



1×10^6 HeLa cells were intracellularly stained with 0.25 μ g HEC1/HEC/NDC80 Recombinant antibody (83859-1-RR, Clone:5A2) and PE-Conjugated Goat Anti-Rabbit IgG(H+L)(red), or 0.25 μ g Rabbit IgG Isotype Control Recombinant Antibody (98136-1-RR, Clone: 240953C9) (blue). Cells were fixed with 4% PFA and permeabilized with Flow Cytometry Perm Buffer (PF00011-C).



Immunofluorescent analysis of (4% PFA) fixed HeLa cells using HEC1/HEC/NDC80 antibody (83859-1-RR, Clone: 5A2) at dilution of 1:500 and Multi-rAb CoraLite® Plus 488-Goat Anti-Rabbit Recombinant Secondary Antibody (H+L) (RGAR002), Alpha Tubulin antibody (66031-1-Ig, Clone: 1E4C11, red).