

For Research Use Only

Mouse ASC/TMS1 Recombinant antibody, PBS Only (Capture)

Catalog Number: 83858-3-PBS



Basic Information

Catalog Number: 83858-3-PBS	GenBank Accession Number: NM_023258	Purification Method: Protein A purification
Size: 100ug , Concentration: 1 mg/ml by Nanodrop;	GeneID (NCBI): 66824	CloneNo.: 240908D5
Source: Rabbit	UNIPROT ID: Q9EPB4	
Isotype: IgG	Full Name: PYD and CARD domain containing	
Immunogen Catalog Number: AG32519	Calculated MW: 21KD	
	Observed MW: 21-25 kDa	

Applications

Tested Applications:
WB, IHC, Cytometric bead array, Indirect ELISA

Species Specificity:
mouse

Product Information

83858-3-PBS targets ASC/TMS1 as part of a matched antibody pair:

MP00782-1: 83858-3-PBS capture and 83858-1-PBS detection (validated in Cytometric bead array)

MP00782-2: 83858-3-PBS capture and 83858-4-PBS detection (validated in Cytometric bead array)

Unconjugated rabbit recombinant monoclonal antibody in PBS only (BSA and azide free) storage buffer at a concentration of 1 mg/mL, ready for conjugation. Created using Proteintech's proprietary in-house recombinant technology. Recombinant production enables unrivalled batch-to-batch consistency, easy scale-up, and future security of supply.

This conjugation ready format makes antibodies ideal for use in many applications including: ELISAs, multiplex assays requiring matched pairs, mass cytometry, and multiplex imaging applications. Antibody use should be optimized by the end user for each application and assay.

Background Information

PYCARD (PYD and CARD domain containing), also known as ASC and CARD5. The calculated molecular weight of PYCARD is 21 kDa. It is located in cytosol, extracellular region and nucleus. PYCARD is also expressed in several structures, including alimentary system; brain; heart; hemolymphoid system gland; and urinary system. The gene enables identical protein binding activity and protein dimerization activity. Involved in several processes, including activation of cysteine-type endopeptidase activity; positive regulation of cytokine production; and regulation of defense response. It acts upstream of or within several processes, including defense response to Gram-positive bacterium; positive regulation of macromolecule metabolic process; and regulation of autophagy. It is also a part of inflammasome complex. Finally, it orthologous to human PYCARD (PYD and CARD domain containing).

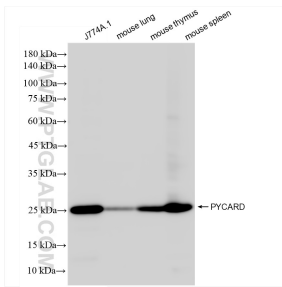
Storage

Storage:
Store at -80°C.
Storage Buffer:
PBS Only

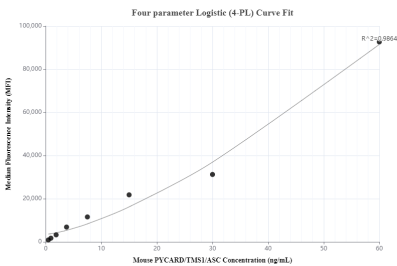
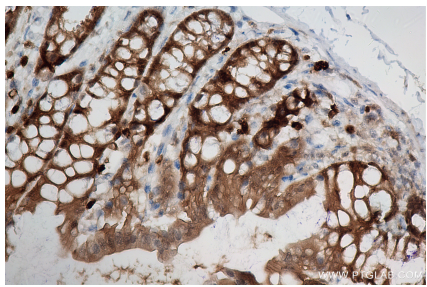
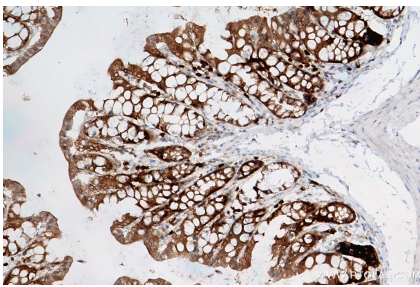
For technical support and original validation data for this product please contact:
T: 1 (888) 4PTGLAB (1-888-478-4522) (toll free in USA), or 1(312) 455-8498 (outside USA)
E: proteintech@ptglab.com
W: ptglab.com

This product is exclusively available under Proteintech Group brand and is not available to purchase from any other manufacturer.

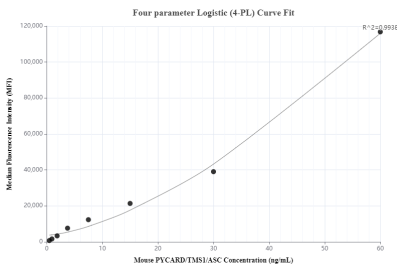
Selected Validation Data



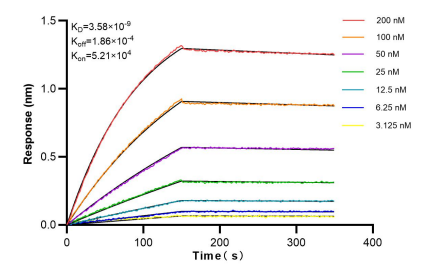
Various lysates were subjected to SDS PAGE followed by western blot with 83858-3-RR (PYCARD antibody) at dilution of 1:2000 incubated at room temperature for 1.5 hours. This data was developed using the same antibody clone with 83858-3-PBS in a different storage buffer formulation.



Cytometric bead array standard curve of MP00782-1, MOUSE ASC/TMS1 Recombinant Matched Antibody Pair, PBS Only. Capture antibody: 83858-3-PBS. Detection antibody: 83858-1-PBS. Standard: Ag32519. Range: 0.47-60 ng/mL



Cytometric bead array standard curve of MP00782-2, MOUSE ASC/TMS1 Recombinant Matched Antibody Pair, PBS Only. Capture antibody: 83858-3-PBS. Detection antibody: 83858-4-PBS. Standard: Ag32519. Range: 0.47-60 ng/mL



Bi-layer interferometry (BLI) kinetic assays of 83858-3-RR against Mouse PYCARD were performed. The affinity constant is 3.58 nM.