

For Research Use Only

SOD1 Recombinant antibody, PBS Only (Capture)

Catalog Number: 83857-3-PBS



Basic Information

Catalog Number: 83857-3-PBS	GenBank Accession Number: NM_000454.5	Purification Method: Protein A purification
Size: 100ug, Concentration: 1 mg/ml by Nanodrop;	GeneID (NCBI): 6647	CloneNo.: 240888F11
Source: Rabbit	UNIPROT ID: P00441	
Isotype: IgG	Full Name: superoxide dismutase 1, soluble	
	Calculated MW: 16kDa	

Applications

Tested Applications:
Cytometric bead array, Sandwich ELISA, Indirect ELISA, Sample test

Species Specificity:
human

Product Information

83857-3-PBS targets SOD1 as part of a matched antibody pair:

MP00799-1: 83857-3-PBS capture and 83857-2-PBS detection (validated in Cytometric bead array, Sandwich ELISA)

Unconjugated rabbit recombinant monoclonal antibody in PBS only (BSA and azide free) storage buffer at a concentration of 1 mg/mL, ready for conjugation. Created using Proteintech's proprietary in-house recombinant technology. Recombinant production enables unrivalled batch-to-batch consistency, easy scale-up, and future security of supply.

This conjugation ready format makes antibodies ideal for use in many applications including: ELISAs, multiplex assays requiring matched pairs, mass cytometry, and multiplex imaging applications. Antibody use should be optimized by the end user for each application and assay.

Storage

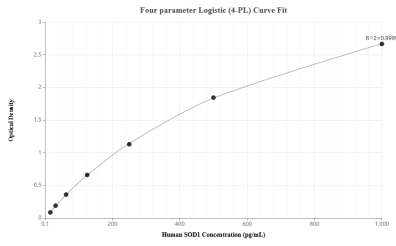
Storage:
Store at -80°C.

Storage Buffer:
PBS Only

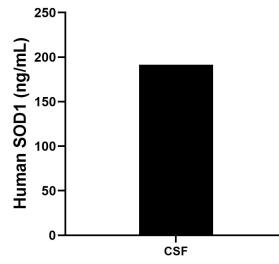
For technical support and original validation data for this product please contact:
T: 1 (888) 4PTGLAB (1-888-478-4522) (toll free in USA), or 1(312) 455-8498 (outside USA) E: proteintech@ptglab.com
W: ptglab.com

This product is exclusively available under Proteintech Group brand and is not available to purchase from any other manufacturer.

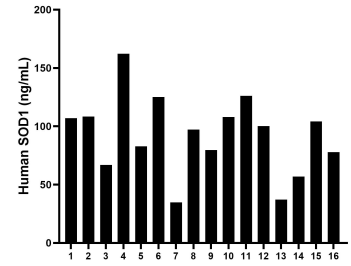
Selected Validation Data



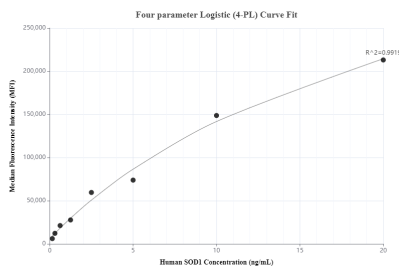
Sandwich ELISA standard curve of MP00799-1, Human SOD1 Recombinant Matched Antibody Pair - PBS only. 83857-3-PBS was coated to a plate as the capture antibody and incubated with serial dilutions of standard Eg1043. 83857-2-PBS was HRP conjugated as the detection antibody. Range: 15.6-1000 pg/mL



The human SOD1 concentration in human cerebrospinal fluid was determined to be 191.6 ng/mL.



Serum of sixteen humans was measured. The human SOD1 concentration of detected samples was determined to be 92.2 ng/mL with a range of 34.8 - 162.3 ng/mL.



Cytometric bead array standard curve of MP00799-1, SOD1 Recombinant Matched Antibody Pair, PBS Only. Capture antibody: 83857-3-PBS. Detection antibody: 83857-2-PBS. Standard: Eg1043. Range: 0.156-20 ng/mL