

For Research Use Only

# SOD1 Recombinant antibody, PBS Only (Detector)

Catalog Number: 83857-2-PBS



## Basic Information

<b>Catalog Number:</b> 83857-2-PBS	<b>GenBank Accession Number:</b> NM_000454.5	<b>Purification Method:</b> Protein A purification
<b>Size:</b> 100ug, Concentration: 1 mg/ml by Nanodrop;	<b>GeneID (NCBI):</b> 6647	<b>CloneNo.:</b> 240888A12
<b>Source:</b> Rabbit	<b>UNIPROT ID:</b> P00441	
<b>Isotype:</b> IgG	<b>Full Name:</b> superoxide dismutase 1, soluble	
	<b>Calculated MW:</b> 16kDa	

## Applications

**Tested Applications:**  
Cytometric bead array, Sandwich ELISA, Indirect ELISA, Sample test

**Species Specificity:**  
human

## Product Information

83857-2-PBS targets SOD1 as part of a matched antibody pair:

MP00799-1: 83857-3-PBS capture and 83857-2-PBS detection (validated in Cytometric bead array, Sandwich ELISA)

MP00799-3: 83857-5-PBS capture and 83857-2-PBS detection (validated in Cytometric bead array)

Unconjugated rabbit recombinant monoclonal antibody in PBS only (BSA and azide free) storage buffer at a concentration of 1 mg/mL, ready for conjugation. Created using Proteintech's proprietary in-house recombinant technology. Recombinant production enables unrivalled batch-to-batch consistency, easy scale-up, and future security of supply.

This conjugation ready format makes antibodies ideal for use in many applications including: ELISAs, multiplex assays requiring matched pairs, mass cytometry, and multiplex imaging applications. Antibody use should be optimized by the end user for each application and assay.

## Storage

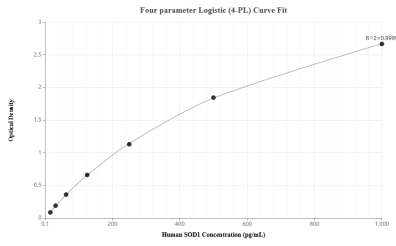
**Storage:**  
Store at -80°C.

**Storage Buffer:**  
PBS Only

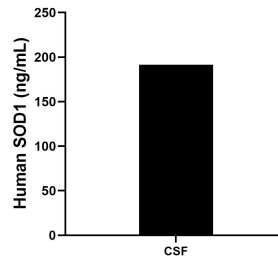
For technical support and original validation data for this product please contact:  
T: 1 (888) 4PTGLAB (1-888-478-4522) (toll free in USA), or 1(312) 455-8498 (outside USA)      E: proteintech@ptglab.com      W: ptglab.com

**This product is exclusively available under Proteintech Group brand and is not available to purchase from any other manufacturer.**

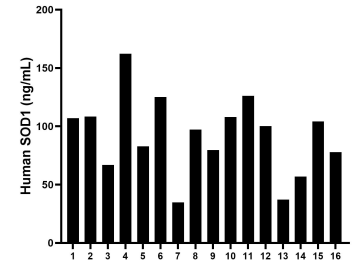
## Selected Validation Data



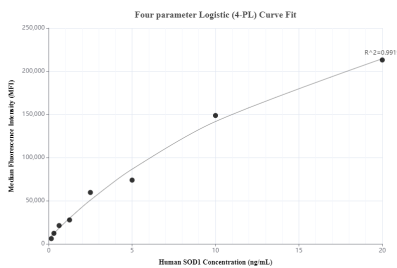
Sandwich ELISA standard curve of MP00799-1, Human SOD1 Recombinant Matched Antibody Pair - PBS only. 83857-3-PBS was coated to a plate as the capture antibody and incubated with serial dilutions of standard Eg1043. 83857-2-PBS was HRP conjugated as the detection antibody. Range: 15.6-1000 pg/mL



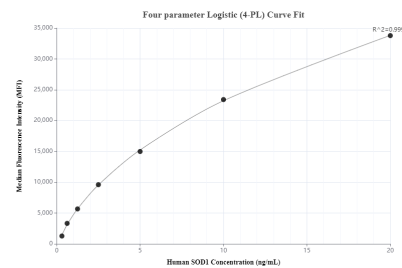
The human SOD1 concentration in human cerebrospinal fluid was determined to be 191.6 ng/mL.



Serum of sixteen humans was measured. The human SOD1 concentration of detected samples was determined to be 92.2 ng/mL with a range of 34.8 - 162.3 ng/mL.



Cytometric bead array standard curve of MP00799-1, SOD1 Recombinant Matched Antibody Pair, PBS Only. Capture antibody: 83857-3-PBS. Detection antibody: 83857-2-PBS. Standard: Eg1043. Range: 0.156-20 ng/mL



Cytometric bead array standard curve of MP00799-3, SOD1 Recombinant Matched Antibody Pair, PBS Only. Capture antibody: 83857-5-PBS. Detection antibody: 83857-2-PBS. Standard: Eg1043. Range: 0.313-20 ng/mL