

For Research Use Only

vwf Recombinant antibody, PBS Only (Detector)

Catalog Number: 83854-1-PBS



Basic Information

Catalog Number: 83854-1-PBS	GenBank Accession Number: GeneID (NCBI): 7450	Purification Method: Protein A purification
Size: 100ug, Concentration: 1 mg/ml by Nanodrop;	UNIPROT ID: P04275	CloneNo.: 240867D7
Source: Rabbit	Full Name: von Willebrand factor	
Isotype: IgG		
Immunogen Catalog Number: AG25578		

Applications

Tested Applications:
Cytometric bead array, Sandwich ELISA, Indirect ELISA, Sample test

Species Specificity:
human

Product Information

83854-1-PBS targets vwf as part of a matched antibody pair:

MP00810-1: 83854-3-PBS capture and 83854-1-PBS detection (validated in Cytometric bead array)

MP00810-2: 83854-2-PBS capture and 83854-1-PBS detection (validated in Cytometric bead array)

MP00810-3: 83854-4-PBS capture and 83854-1-PBS detection (validated in Sandwich ELISA)

Unconjugated rabbit recombinant monoclonal antibody in PBS only (BSA and azide free) storage buffer at a concentration of 1 mg/mL, ready for conjugation. Created using Proteintech's proprietary in-house recombinant technology. Recombinant production enables unrivalled batch-to-batch consistency, easy scale-up, and future security of supply.

This conjugation ready format makes antibodies ideal for use in many applications including: ELISAs, multiplex assays requiring matched pairs, mass cytometry, and multiplex imaging applications. Antibody use should be optimized by the end user for each application and assay.

Storage

Storage:
Store at -80°C.
Storage Buffer:
PBS Only

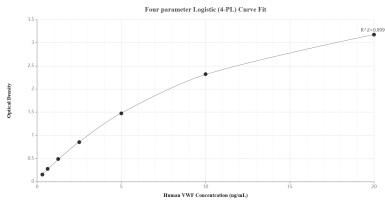
For technical support and original validation data for this product please contact:

T: 1 (888) 4PTGLAB (1-888-478-4522) (toll free in USA), or 1(312) 455-8498 (outside USA)

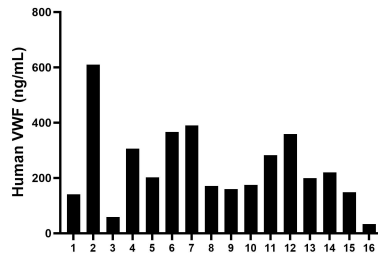
E: proteintech@ptglab.com
W: ptglab.com

This product is exclusively available under Proteintech Group brand and is not available to purchase from any other manufacturer.

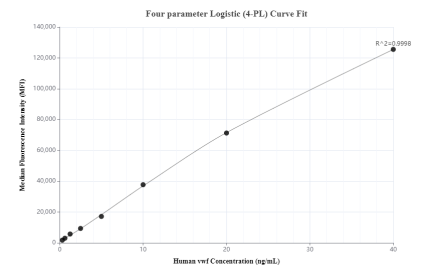
Selected Validation Data



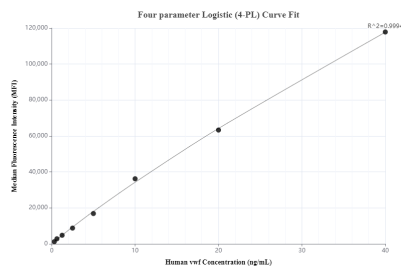
Sandwich ELISA standard curve of MP00810-3, Human VWF Recombinant Matched Antibody Pair - PBS only. 83854-4-PBS was coated to a plate as the capture antibody and incubated with serial dilutions of standard Ag25578. 83854-1-PBS was HRP conjugated as the detection antibody. Range: 0.313-20 ng/mL.



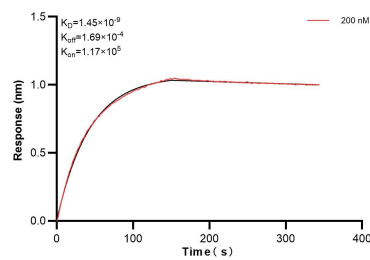
Serum of sixteen individual healthy human donors was measured. The VWF concentration of detected samples was determined to be 239.02 ng/mL with a range of 33.91-609.64 ng/mL.



Cytometric bead array standard curve of MP00810-1, VWF Recombinant Matched Antibody Pair, PBS Only. Capture antibody: 83854-3-PBS. Detection antibody: 83854-1-PBS. Standard: Ag25578. Range: 0.313-40 ng/mL.



Cytometric bead array standard curve of MP00810-2, VWF Recombinant Matched Antibody Pair, PBS Only. Capture antibody: 83854-2-PBS. Detection antibody: 83854-1-PBS. Standard: Ag25578. Range: 0.313-40 ng/mL.



Biolayer interferometry (BLI) kinetic assay of 83854-1-PBS against Human vwf was performed. The affinity constant is 1.45 nM.