

For Research Use Only

CYFIP2 Recombinant antibody, PBS Only

Catalog Number: 83845-3-PBS



Basic Information

Catalog Number: 83845-3-PBS	GenBank Accession Number: BC011762	Purification Method: Protein A purification
Size: 100ug, Concentration: 1 mg/ml by Nanodrop;	GeneID (NCBI): 26999	CloneNo.: 240909E3
Source: Rabbit	UNIPROT ID: Q96F07	
Isotype: IgG	Full Name: cytoplasmic FMR1 interacting protein 2	
Immunogen Catalog Number: AG8749	Calculated MW: 148 kDa	

Applications

Tested Applications:
IF/ICC, FC (Intra), ELISA

Species Specificity:
human

Background Information

CYFIP1/2 belongs to the CYFIP family and is involved in T-cell adhesion and p53-dependent induction of apoptosis. CYFIP1 contains 1,253 amino acids and shares 88% sequence identity with CYFIP2. CYFIP1 and CYFIP2 are members of a highly conserved protein family and share approximately 99% sequence identity with their mouse orthologs. CYFIP1 has been shown to interact with the small GTPase RAC1, which is implicated in development and maintenance of neuronal structures. Consistent with FMRP and RAC1 localization in dendritic fine structures, CYFIP1/2 are present in synaptosomal extracts. This antibody can recognize both CYFIP1 and CYFIP2.

Storage

Storage:
Store at -80°C.

Storage Buffer:
PBS Only

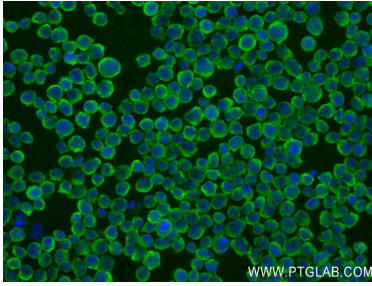
For technical support and original validation data for this product please contact:

T: 1 (888) 4PTGLAB (1-888-478-4522) (toll free in USA), or 1(312) 455-8498 (outside USA)

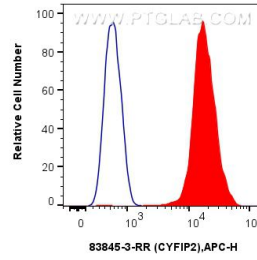
E: proteintech@ptglab.com
W: ptglab.com

This product is exclusively available under Proteintech Group brand and is not available to purchase from any other manufacturer.

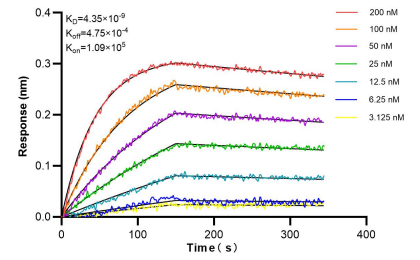
Selected Validation Data



Immunofluorescent analysis of (4% PFA) fixed Jurkat cells using CYFIP2 antibody (83845-3-RR, Clone: 240909E3) at dilution of 1:250 and CoraLite@488-Conjugated AffiniPure Goat Anti-Rabbit IgG(H+L) (SA00013-2). This data was developed using the same antibody clone with 83845-3-PBS in a different storage buffer formulation.



1×10^6 Jurkat cells were intracellularly stained with 0.25 μ g Cyfip2 Recombinant Antibody (83845-3-RR, Clone:240909E3) and APC-Conjugated AffiniPure Goat Anti-Rabbit IgG(H+L)(red), or 0.25 μ g Isotype Control (blue). Cells were fixed with 4% PFA and permeabilized with Flow Cytometry Perm Buffer (PF00011-C). This data was developed using the same antibody clone with 83845-3-PBS in a different storage buffer formulation.



Bi-layer interferometry (BLI) kinetic assays of 83845-3-RR against Human CYFIP2 were performed. The affinity constant is 4.35 nM.