

For Research Use Only

SLC31A1 Recombinant antibody, PBS Only

Catalog Number: 83844-5-PBS



Basic Information

Catalog Number:

83844-5-PBS

Size:

100ug, Concentration: 1 mg/ml by Nanodrop;

Source:

Rabbit

Isotype:

IgG

Immunogen Catalog Number:

AG26601

GenBank Accession Number:

BC013611

GeneID (NCBI):

1317

UNIPROT ID:

O15431

Full Name:

solute carrier family 31 (copper transporters), member 1

Calculated MW:

21 kDa

Observed MW:

21-23 kDa

Purification Method:

Protein A purification

CloneNo.:

240868D10

Applications

Tested Applications:

WB, ELISA

Species Specificity:

human

Storage

Storage:

Store at -80°C.

Storage Buffer:

PBS Only

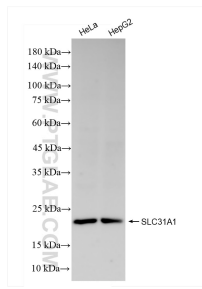
For technical support and original validation data for this product please contact:

T: 1 (888) 4PTGLAB (1-888-478-4522) (toll free in USA), or 1(312) 455-8498 (outside USA)

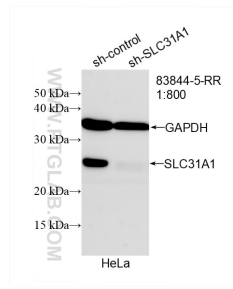
E: proteintech@ptglab.com
W: ptglab.com

This product is exclusively available under Proteintech Group brand and is not available to purchase from any other manufacturer.

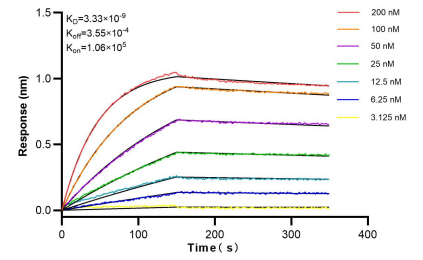
Selected Validation Data



Various lysates were subjected to SDS PAGE followed by western blot with 83844-5-RR (SLC31A1 antibody) at dilution of 1:10000 incubated at room temperature for 1.5 hours. This data was developed using the same antibody clone with 83844-5-PBS in a different storage buffer formulation.



WB result of SLC31A1 antibody (83844-5-RR; 1:800; incubated at room temperature for 1.5 hours) with sh-Control and sh-SLC31A1 transfected HeLa cells. This data was developed using the same antibody clone with 83844-5-PBS in a different storage buffer formulation.



Bioluminescence resonance energy transfer (BLI) kinetic assays of 83844-5-RR against Human SLC31A1 were performed. The affinity constant is 3.33 nM.