

For Research Use Only

SLC31A1 Recombinant antibody, PBS Only (Detector)

Catalog Number:83844-1-PBS



Basic Information

Catalog Number: 83844-1-PBS	GenBank Accession Number: BC013611	Purification Method: Protein A purification
Size: 100ug , Concentration: 1 mg/ml by Nanodrop;	GeneID (NCBI): 1317	CloneNo.: 240868A11
Source: Rabbit	UNIPROT ID: O15431	
Isotype: IgG	Full Name: solute carrier family 31 (copper transporters), member 1	
Immunogen Catalog Number: AG26601	Calculated MW: 21 kDa	

Applications

Tested Applications:
Cytometric bead array, Sandwich ELISA, Indirect ELISA, Sample test

Species Specificity:
human

Product Information

83844-1-PBS targets SLC31A1 as part of a matched antibody pair:

MP00817-1: 83844-3-PBS capture and 83844-1-PBS detection (validated in Cytometric bead array)

MP00817-3: 83844-2-PBS capture and 83844-1-PBS detection (validated in Cytometric bead array)

MP00817-4: 83844-7-PBS capture and 83844-1-PBS detection (validated in Sandwich ELISA)

Unconjugated rabbit recombinant monoclonal antibody in PBS only (BSA and azide free) storage buffer at a concentration of 1 mg/mL, ready for conjugation. Created using Proteintech's proprietary in-house recombinant technology. Recombinant production enables unrivalled batch-to-batch consistency, easy scale-up, and future security of supply.

This conjugation ready format makes antibodies ideal for use in many applications including: ELISAs, multiplex assays requiring matched pairs, mass cytometry, and multiplex imaging applications. Antibody use should be optimized by the end user for each application and assay.

Storage

Storage:
Store at -80°C.

Storage Buffer:
PBS Only

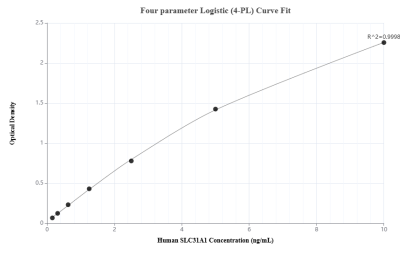
For technical support and original validation data for this product please contact:

T: 1 (888) 4PTGLAB (1-888-478-4522) (toll free in USA), or 1(312) 455-8498 (outside USA)

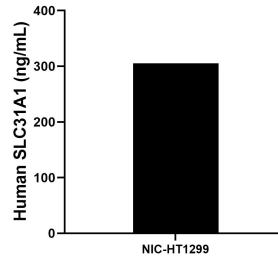
E: proteintech@ptglab.com
W: ptglab.com

This product is exclusively available under Proteintech Group brand and is not available to purchase from any other manufacturer.

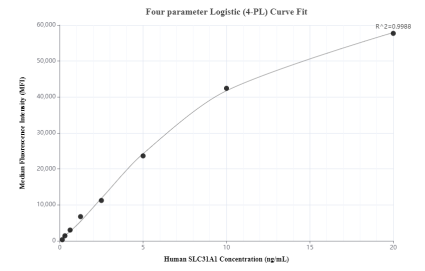
Selected Validation Data



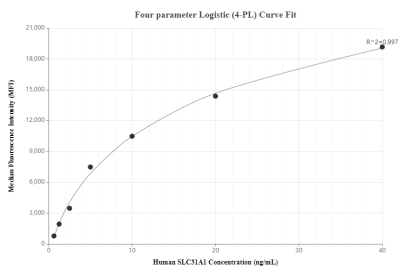
Sandwich ELISA standard curve of MP00817-4, Human SLC31A1 Recombinant Matched Antibody Pair - PBS only. 83844-7-PBS was coated to a plate as the capture antibody and incubated with serial dilutions of standard Ag26601. 83844-1-PBS was HRP conjugated as the detection antibody. Range: 0.156-10 ng/mL



The mean SLC31A1 concentration was determined to be 305.42 ng/mL in NIC-HT1299 cell extract based on a 1.5 mg/mL extract load.



Cytometric bead array standard curve of MP00817-1, SLC31A1 Recombinant Matched Antibody Pair, PBS Only. Capture antibody: 83844-3-PBS. Detection antibody: 83844-1-PBS. Standard: Ag26601. Range: 0.156-20 ng/mL



Cytometric bead array standard curve of MP00817-3, SLC31A1 Recombinant Matched Antibody Pair, PBS Only. Capture antibody: 83844-2-PBS. Detection antibody: 83844-1-PBS. Standard: Ag26601. Range: 0.625-40 ng/mL