

For Research Use Only

TRMT6 Recombinant antibody

Catalog Number: 83843-5-RR

Featured Product



Basic Information

Catalog Number: 83843-5-RR	GenBank Accession Number: BC001262	Purification Method: Protein A purification
Size: 100ul , Concentration: 1000 ug/ml by Nanodrop;	GeneID (NCBI): 51605	CloneNo.: 240911C5
Source: Rabbit	UNIPROT ID: Q9UJA5	Recommended Dilutions: WB 1:5000-1:50000 IHC 1:1500-1:6000 IF/ICC 1:125-1:500
Isotype: IgG	Full Name: tRNA methyltransferase 6 homolog (S. cerevisiae)	
Immunogen Catalog Number: AG10176	Calculated MW: 56 kDa	
	Observed MW: 55-60 kDa	

Applications

Tested Applications:
WB, IHC, IF/ICC, ELISA

Species Specificity:
human

Note-IHC: suggested antigen retrieval with TE buffer pH 9.0; (*) Alternatively, antigen retrieval may be performed with citrate buffer pH 6.0

Positive Controls:

WB : U-251 cells, HepG2 cells, U-87 MG cells, SMMC-7721 cells, HuH-7 cells

IHC : human ovarian cancer,

IF/ICC : HeLa cells, A431 cells

Background Information

Transfer RNA (tRNA) modifications help regulate the efficiency of mRNA translation by maintaining the correct reading frames within mRNA. TRMT6 (tRNA methyltransferase 6), also known as GCD10 or TRM6, is a 497 amino acid protein that localizes to the nucleus and exists as a heterodimer with TRM61. Expressed in liver, brain, ovary and testis, TRMT6 functions as a substrate-binding subunit of tRNA and is thought to catalyze the formation of N(1)-methyladenine at position 58 in initiator methionyl-tRNA.

Storage

Storage:

Store at -20°C. Stable for one year after shipment.

Storage Buffer:

PBS with 0.02% sodium azide and 50% glycerol pH 7.3.

Aliquoting is unnecessary for -20°C storage

*** 20ul sizes contain 0.1% BSA

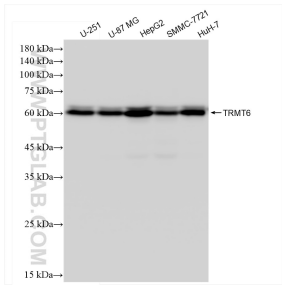
For technical support and original validation data for this product please contact:

T: 1 (888) 4PTGLAB (1-888-478-4522) (toll free in USA), or 1(312) 455-8498 (outside USA)

E: proteintech@ptglab.com
W: ptglab.com

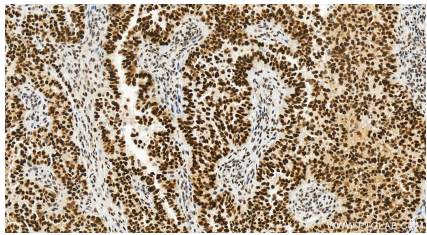
This product is exclusively available under Proteintech Group brand and is not available to purchase from any other manufacturer.

Selected Validation Data

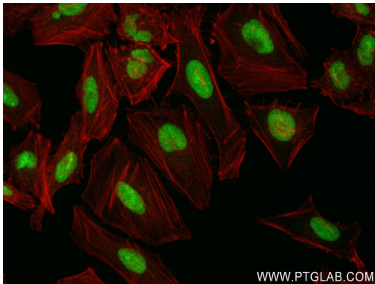


Various lysates were subjected to SDS PAGE followed by western blot with 83843-5-RR (TRMT6 antibody) at dilution of 1:15000 incubated at room temperature for 1.5 hours.

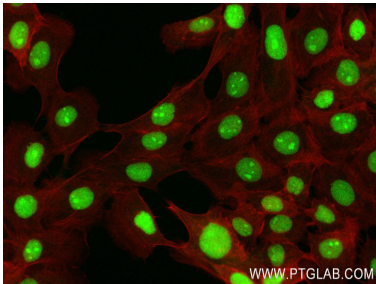
WB result of TRMT6 antibody (83843-5-RR; 1:60000; incubated at room temperature for 1.5 hours) with sh-Control and sh-TRMT6 transfected HepG2 cells.



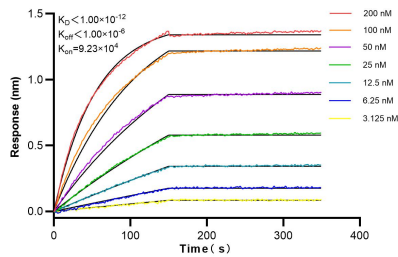
Immunohistochemical analysis of paraffin-embedded human ovarian cancer slide using 83843-5-RR (TRMT6 antibody) at dilution of 1:3000 (under 20x lens). Heat mediated antigen retrieval with Tris-EDTA buffer (pH 9.0).



Immunofluorescent analysis of (4% PFA) fixed HeLa cells using TRMT6 antibody (83843-5-RR, Clone: 240911C5) at dilution of 1:250 and CoraLite®488-Conjugated AffiniPure Goat Anti-Rabbit IgG(H+L) (SA00013-2), CL594-Phalloidin (red).



Immunofluorescent analysis of (4% PFA) fixed A431 cells using TRMT6 antibody (83843-5-RR, Clone: 240911C5) at dilution of 1:250 and CoraLite®488-Conjugated AffiniPure Goat Anti-Rabbit IgG(H+L) (SA00013-2), CL594-Phalloidin (red).



Biolayer interferometry (BLI) kinetic assays of 83843-5-RR against Human TRMT6 were performed. The affinity constant is below 1 pM.