

For Research Use Only

SMAD2 Recombinant antibody, PBS Only (Capture/Detector)

Catalog Number:83841-3-PBS



Basic Information

Catalog Number: 83841-3-PBS	GenBank Accession Number: BC014840	Purification Method: Protein A purification
Size: 100ug , Concentration: 1 mg/ml by Nanodrop;	GeneID (NCBI): 4087	CloneNo.: 240950G10
Source: Rabbit	UNIPROT ID: Q15796	
Isotype: IgG	Full Name: SMAD family member 2	
Immunogen Catalog Number: AG3237	Calculated MW: 467 aa, 52 kDa	

Applications

Tested Applications:
Cytometric bead array, Sandwich ELISA, Indirect ELISA, Sample test

Species Specificity:
human

Product Information

83841-3-PBS targets SMAD2 as part of a matched antibody pair:

MP00791-1: 83841-2-PBS capture and 83841-3-PBS detection (validated in Cytometric bead array, Sandwich ELISA)

MP00791-2: 83841-3-PBS capture and 83841-1-PBS detection (validated in Cytometric bead array)

Unconjugated rabbit recombinant monoclonal antibody in PBS only (BSA and azide free) storage buffer at a concentration of 1 mg/mL, ready for conjugation. Created using Proteintech's proprietary in-house recombinant technology. Recombinant production enables unrivalled batch-to-batch consistency, easy scale-up, and future security of supply.

This conjugation ready format makes antibodies ideal for use in many applications including: ELISAs, multiplex assays requiring matched pairs, mass cytometry, and multiplex imaging applications. Antibody use should be optimized by the end user for each application and assay.

Storage

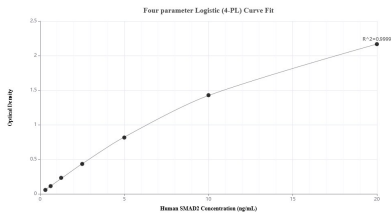
Storage:
Store at -80°C.

Storage Buffer:
PBS Only

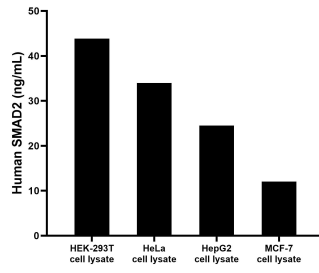
For technical support and original validation data for this product please contact:
T: 1 (888) 4PTGLAB (1-888-478-4522) (toll free in USA), or 1(312) 455-8498 (outside USA) E: proteintech@ptglab.com
W: ptglab.com

This product is exclusively available under Proteintech Group brand and is not available to purchase from any other manufacturer.

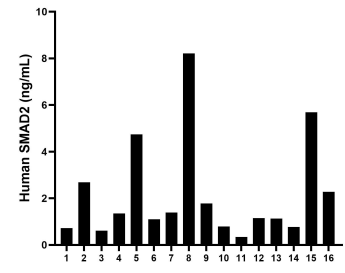
Selected Validation Data



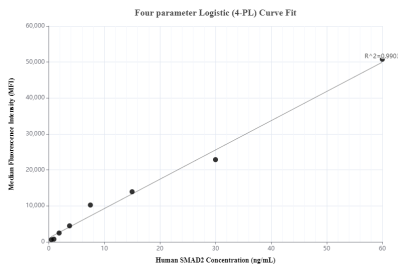
Sandwich ELISA standard curve of MP00791-1, Human SMAD2 Recombinant Matched Antibody Pair - PBS only. 83841-2-PBS was coated to a plate as the capture antibody and incubated with serial dilutions of standard Ag3237. 83841-3-PBS was HRP conjugated as the detection antibody. Range: 0.313-20 ng/mL



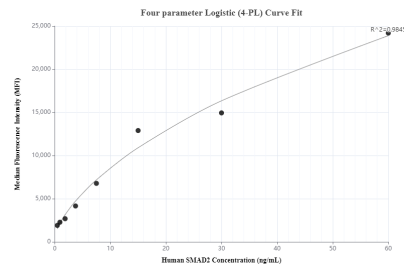
HEK-293T, HeLa, HepG2 and MCF-7 cell lysates were measured. The human SMAD2 concentration of detected samples was determined to be 43.85 ng/mL in HEK-293T cell lysate (based on a 5.5 mg/mL extract load). The human SMAD2 concentration of detected samples was determined to be 33.98 ng/mL in HeLa cell lysate (based on a 7 mg/mL extract load). The human SMAD2 concentration of detected samples was determined to be 24.50 ng/mL in HepG2 cell



Serum of sixteen individual healthy human donors was measured. The human SMAD2 concentration of detected samples was determined to be 2.17 ng/mL with a range of 0.34 - 8.22 ng/mL



Cytometric bead array standard curve of MP00791-1, SMAD2 Recombinant Matched Antibody Pair, PBS Only. Capture antibody: 83841-2-PBS. Detection antibody: 83841-3-PBS. Standard: Ag3237. Range: 0.469-60 ng/mL



Cytometric bead array standard curve of MP00791-2, SMAD2 Recombinant Matched Antibody Pair, PBS Only. Capture antibody: 83841-3-PBS. Detection antibody: 83841-1-PBS. Standard: Ag3237. Range: 0.469-60 ng/mL