

For Research Use Only

PKC Alpha Recombinant antibody

Catalog Number: 83840-5-RR



Basic Information

Catalog Number: 83840-5-RR	GenBank Accession Number: BC109274	Purification Method: Protein A purification
Size: 100ul , Concentration: 1000 µg/ml by Nanodrop;	GeneID (NCBI): 5578	CloneNo.: 240926F6
Source: Rabbit	UNIPROT ID: P17252	Recommended Dilutions: WB 1:5000-1:50000
Isotype: IgG	Full Name: protein kinase C, alpha	
Immunogen Catalog Number: AG1025	Observed MW: 77 kDa	

Applications

Tested Applications:
WB, FC (Intra), ELISA

Species Specificity:
human, mouse, rat

Positive Controls:

WB : HeLa cells, HEK-293 cells, Jurkat cells, NIH/3T3 cells, C6 cells, human platelets, rat brain tissue

Background Information

Protein kinase C (PKC) is a family of serine- and threonine-specific protein kinases that can be activated by calcium and the second messenger diacylglycerol. PKC family members phosphorylate a wide variety of protein targets and are known to be involved in diverse cellular signaling pathways. PKC family members also serve as major receptors for phorbol esters, a class of tumor promoters. Each member of the PKC family has a specific expression profile and is believed to play a distinct role in cells. PRKCA is one of the PKC family members. This kinase has been reported to play roles in many different cellular processes, such as cell adhesion, cell transformation, cell cycle checkpoint, and cell volume control. Knockout studies in mice suggest that this kinase may be a fundamental regulator of cardiac contractility and Ca(2+) handling in myocytes.

Storage

Storage:
Store at -20°C. Stable for one year after shipment.

Storage Buffer:
PBS with 0.02% sodium azide and 50% glycerol pH 7.3.

Aliquoting is unnecessary for -20°C storage

*** 20ul sizes contain 0.1% BSA

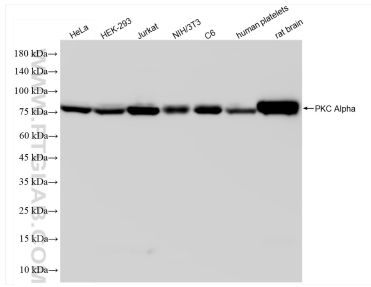
For technical support and original validation data for this product please contact:

T: 1 (888) 4PTGLAB (1-888-478-4522) (toll free
in USA), or 1(312) 455-8498 (outside USA)

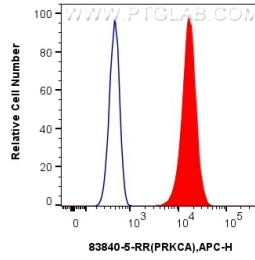
E: proteintech@ptglab.com
W: ptglab.com

This product is exclusively available under Proteintech Group brand and is not available to purchase from any other manufacturer.

Selected Validation Data



Various lysates were subjected to SDS PAGE followed by western blot with 83840-5-RR (PRKCA antibody) at dilution of 1:10000 incubated at room temperature for 1.5 hours.



1×10^6 HepG2 cells were intracellularly stained with 0.25 μ g PKC Alpha Recombinant antibody (83840-5-RR, Clone:240926F6) and APC-Conjugated AffiniPure Goat Anti-Rabbit IgG(H+L) (red), or 0.25 μ g Isotype Control (blue). Cells were fixed with 4% PFA and permeabilized with Flow Cytometry Perm Buffer (PF00011-C).