

For Research Use Only

GOLGA5 Recombinant antibody, PBS Only (Capture/Detector)

Catalog Number:83839-2-PBS



Basic Information

Catalog Number: 83839-2-PBS	GenBank Accession Number: BC023021	Purification Method: Protein A purification
Size: 100ug , Concentration: 1 mg/ml by Nanodrop;	GeneID (NCBI): 9950	CloneNo.: 240893F6
Source: Rabbit	UNIPROT ID: Q8TBA6	
Isotype: IgG	Full Name: golgi autoantigen, golgin subfamily a, 5	
Immunogen Catalog Number: AG35031	Calculated MW: 83 kDa	
	Observed MW: 80-95 kDa	

Applications

Tested Applications:
WB, IHC, Cytometric bead array, Indirect ELISA

Species Specificity:
human

Product Information

83839-2-PBS targets GOLGA5 as part of a matched antibody pair:

MP00813-2: 83839-2-PBS capture and 83839-2-PBS detection (validated in Cytometric bead array)

MP00813-3: 83839-5-PBS capture and 83839-2-PBS detection (validated in Cytometric bead array)

Unconjugated rabbit recombinant monoclonal antibody in PBS only (BSA and azide free) storage buffer at a concentration of 1 mg/mL, ready for conjugation. Created using Proteintech's proprietary in-house recombinant technology. Recombinant production enables unrivalled batch-to-batch consistency, easy scale-up, and future security of supply.

This conjugation ready format makes antibodies ideal for use in many applications including: ELISAs, multiplex assays requiring matched pairs, mass cytometry, and multiplex imaging applications. Antibody use should be optimized by the end user for each application and assay.

Background Information

GOLGA5 (Golgin subfamily A member 5) maintains Golgi structure, and stimulates the formation of Golgi stacks and ribbons. Also, it is involved in intra-Golgi retrograde transport (PMID: 12538640; 15718469).

Storage

Storage:
Store at -80°C.
Storage Buffer:
PBS Only

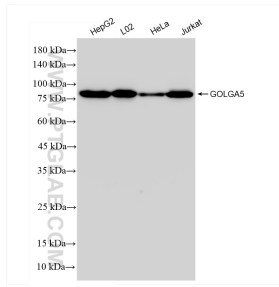
For technical support and original validation data for this product please contact:

T: 1 (888) 4PTGLAB (1-888-478-4522) (toll free in USA), or 1(312) 455-8498 (outside USA)

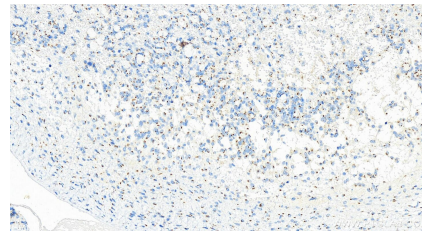
E: proteintech@ptglab.com
W: ptglab.com

This product is exclusively available under Proteintech Group brand and is not available to purchase from any other manufacturer.

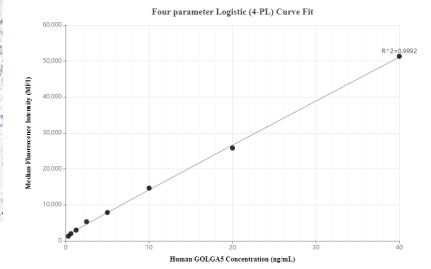
Selected Validation Data



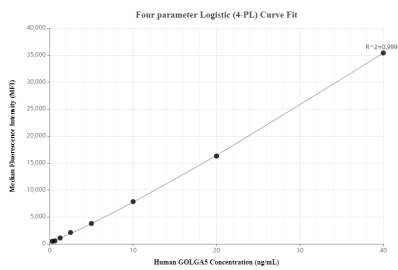
Various lysates were subjected to SDS PAGE followed by western blot with 83839-2-RR (GOLGA5 antibody) at dilution of 1:10000 incubated at room temperature for 1.5 hours. This data was developed using the same antibody clone with 83839-2-PBS in a different storage buffer formulation.



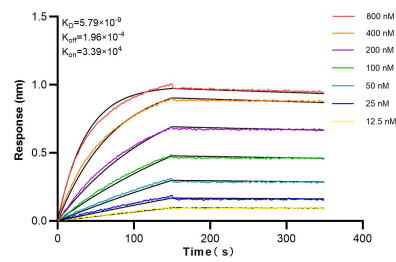
Immunohistochemical analysis of paraffin-embedded human ovary cancer tissue slide using 83839-2-RR (GOLGA5 antibody) at dilution of 1:1000 (under 20x lens). Heat mediated antigen retrieval with Tris-EDTA buffer (pH 9.0). This data was developed using the same antibody clone with 83839-2-PBS in a different storage buffer formulation.



Cytometric bead array standard curve of MP00813-2, GOLGA5 Recombinant Matched Antibody Pair, PBS Only. Capture antibody: 83839-2-PBS. Detection antibody: 83839-2-PBS. Standard: Ag35031. Range: 0.313-40 ng/mL.



Cytometric bead array standard curve of MP00813-3, GOLGA5 Recombinant Matched Antibody Pair, PBS Only. Capture antibody: 83839-5-PBS. Detection antibody: 83839-2-PBS. Standard: Ag35031. Range: 0.313-40 ng/mL.



Biolayer interferometry (BLI) kinetic assays of 83839-2-RR against Human GOLGA5 were performed. The affinity constant is 5.79 nM.