

For Research Use Only

# Fibrillin 1 Recombinant antibody

Catalog Number:83836-4-RR



## Basic Information

<b>Catalog Number:</b> 83836-4-RR	<b>GenBank Accession Number:</b> BC146854	<b>Purification Method:</b> Protein A purification
<b>Size:</b> 100ul , Concentration: 1000 ug/ml by Nanodrop;	<b>GeneID (NCBI):</b> 2200	<b>CloneNo.:</b> 240960G12
<b>Source:</b> Rabbit	<b>UNIPROT ID:</b> P35555	<b>Recommended Dilutions:</b> WB 1:5000-1:50000 IHC 1:200-1:800
<b>Isotype:</b> IgG	<b>Full Name:</b> fibrillin 1	
<b>Immunogen Catalog Number:</b> AG30283	<b>Observed MW:</b> 350 kDa	

## Applications

<b>Tested Applications:</b> WB, IHC, ELISA	<b>Positive Controls:</b>
<b>Species Specificity:</b> human	<b>WB :</b> HeLa cells, <b>IHC :</b> human stomach cancer tissue,

**Note-IHC: suggested antigen retrieval with TE buffer pH 9.0; (\*) Alternatively, antigen retrieval may be performed with citrate buffer pH 6.0**

## Background Information

Fibrillin-1 belongs to the fibrillin family. Fibrillins are structural components of 10-12 nm extracellular calcium-binding microfibrils, which occur either in association with elastin or in elastin-free bundles. Fibrillin-1-containing microfibrils provide long-term force bearing structural support. Defects in Fibrillin-1 are a cause of Marfan syndrome (MFS), isolated ectopia lentis (EL), Weill-Marchesani syndrome autosomal dominant (ADWMS), Shprintzen-Goldberg craniosynostosis syndrome (SGS) or MASS syndrome.

## Storage

**Storage:**  
Store at -20°C. Stable for one year after shipment.  
**Storage Buffer:**  
PBS with 0.02% sodium azide and 50% glycerol pH 7.3.  
Aliquoting is unnecessary for -20°C storage

\*\*\* 20ul sizes contain 0.1% BSA

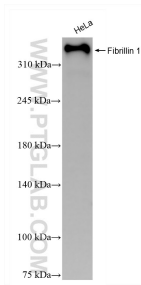
For technical support and original validation data for this product please contact:

T: 1 (888) 4PTGLAB (1-888-478-4522) (toll free in USA), or 1(312) 455-8498 (outside USA)

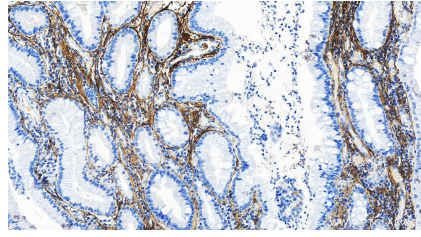
E: proteintech@ptglab.com  
W: ptglab.com

This product is exclusively available under Proteintech Group brand and is not available to purchase from any other manufacturer.

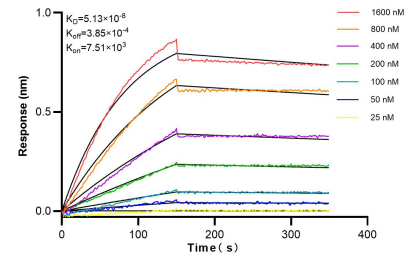
## Selected Validation Data



HeLa cells were subjected to SDS PAGE followed by western blot with 83836-4-RR (Fibrillin 1 antibody) at dilution of 1:10000 incubated at room temperature for 1.5 hours.



Immunohistochemical analysis of paraffin-embedded human stomach cancer tissue slide using 83836-4-RR (Fibrillin 1 antibody) at dilution of 1:400 (under 20x lens). Heat mediated antigen retrieval with Tris-EDTA buffer(pH9).



Bi-layer interferometry (BLI) kinetic assays of 83836-4-RR against Human Fibrillin 1 were performed. The affinity constant is 51.3 nM.