

For Research Use Only

Fibrillin 1 Recombinant antibody

Catalog Number:83836-2-RR



Basic Information

Catalog Number: 83836-2-RR	GenBank Accession Number: BC146854	Purification Method: Protein A purification
Size: 100ul , Concentration: 1000 ug/ml by Nanodrop;	GeneID (NCBI): 2200	CloneNo.: 240960E11
Source: Rabbit	UNIPROT ID: P35555	Recommended Dilutions: IF/ICC 1:50-1:500
Isotype: IgG	Full Name: fibrillin 1	
Immunogen Catalog Number: AG30283		

Applications

Tested Applications: IF/ICC, ELISA	Positive Controls: IF/ICC : HeLa cells,
Species Specificity: human	

Background Information

Fibrillin-1 belongs to the fibrillin family. Fibrillins are structural components of 10-12 nm extracellular calcium-binding microfibrils, which occur either in association with elastin or in elastin-free bundles. Fibrillin-1-containing microfibrils provide long-term force bearing structural support. Defects in Fibrillin-1 are a cause of Marfan syndrome (MFS), isolated ectopia lentis (EL), Weill-Marchesani syndrome autosomal dominant (ADWMS), Shprintzen-Goldberg craniosynostosis syndrome (SGS) or MASS syndrome.

Storage

Storage:
Store at -20°C. Stable for one year after shipment.
Storage Buffer:
PBS with 0.02% sodium azide and 50% glycerol pH 7.3.
Aliquoting is unnecessary for -20°C storage

*** 20ul sizes contain 0.1% BSA

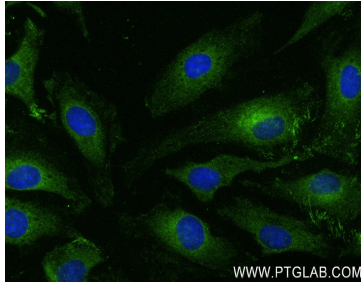
For technical support and original validation data for this product please contact:

T: 1 (888) 4PTGLAB (1-888-478-4522) (toll free
in USA), or 1(312) 455-8498 (outside USA)

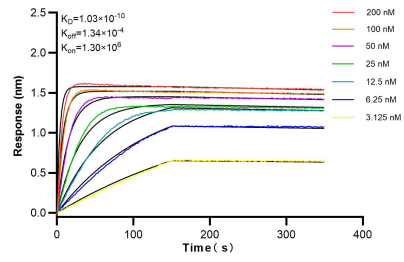
E: proteintech@ptglab.com
W: ptglab.com

This product is exclusively available under Proteintech Group brand and is not available to purchase from any other manufacturer.

Selected Validation Data



Immunofluorescent analysis of (-20°C Ethanol) fixed HeLa cells using Fibrillin 1 antibody (83836-2-RR, Clone: 240960E11) at dilution of 1:200 and CoraLite®488-Conjugated Goat Anti-Rabbit IgG(H+L) (SA00013-2).



Biolayer interferometry (BLI) kinetic assays of 83836-2-RR against Human Fibrillin 1 were performed. The affinity constant is 0.103 nM.